

Bingham Farms - Georgetowne 31600 Building - 1,334 Sq. Ft



PROPERTY ADDRESS:

31600 Telegraph Road
Suite 260
Bingham Farms, MI 48025

SUITE SIZE: 1,334 Sq. Ft.

AVAILABLE: Immediately

FLOORPLAN: See page 2

LEASE RATE: Negotiable

LEASE TERM: 5 year term

DEMOGRAPHICS:

Oakland County, MI:

Population (2015): 1,243,970
Median household income (2015): \$67,465
Median house value (2015): \$178,900

Bingham Farms, MI:

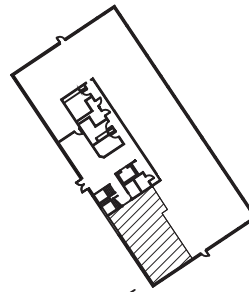
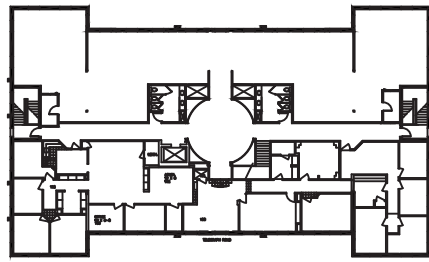
Population (2015): 1,133
Median household income (2015): \$102,083
Median house value (2015): \$361,500



SUITE DESCRIPTION:

- Nicely sized reception area, upon entering
- 4 windowed offices (2 are corner offices)
- Coffee room with sink & countertop
- Copy room

Other features include individual control over the HVAC; windows that open and plenty of convenient parking.



TELEGRAPH ROAD

GEORGETOWNE EXECUTIVE OFFICES

31600 TELEGRAPH ROAD – BINGHAM FARMS, MI

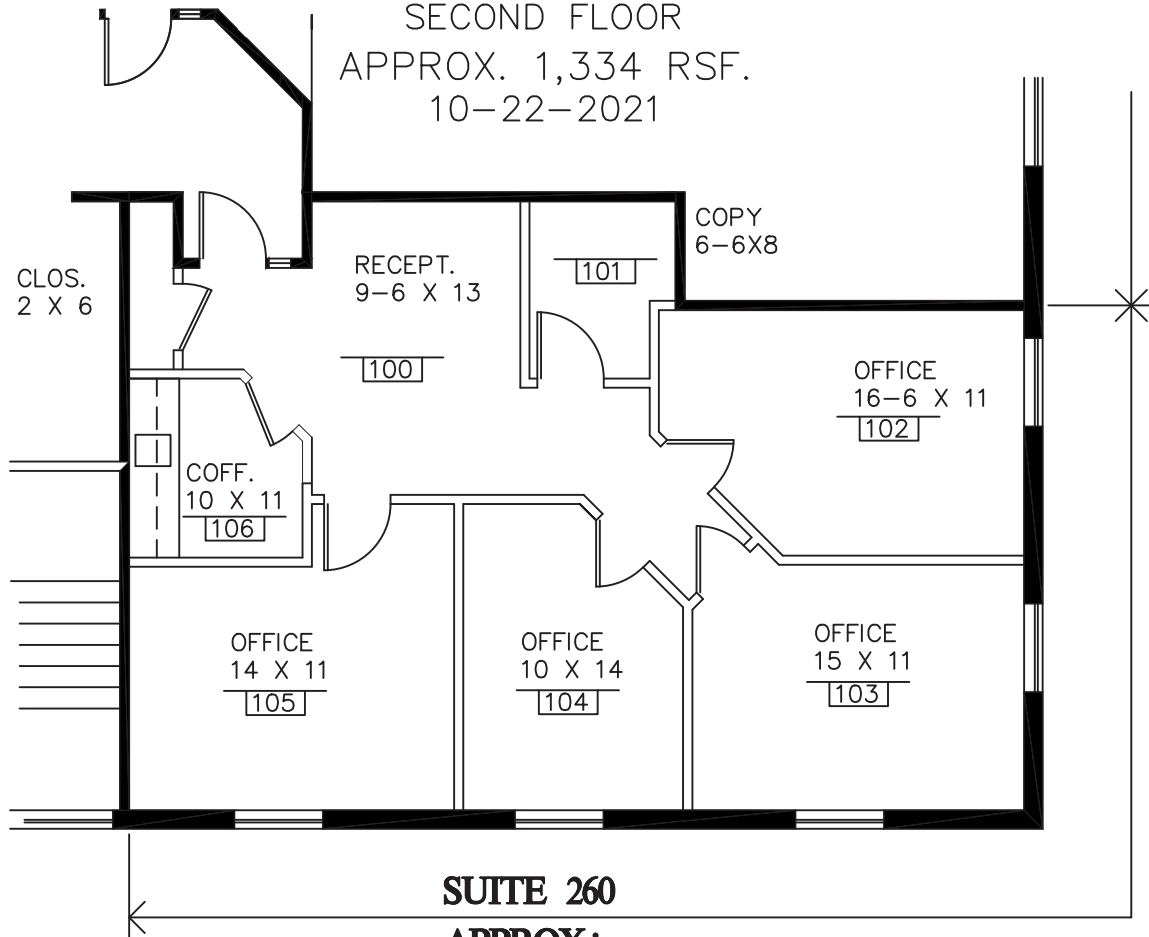
JAY INWALD

SUITE # 260

SECOND FLOOR

APPROX. 1,334 RSF.

10-22-2021



Beachum & Poeser

DEVELOPMENT & MANAGEMENT CORPORATION