

Plymouth - Pinehurst Building - 1,160 Sq. Ft



PROPERTY ADDRESS:

44670 Ann Arbor Road
Suite 100
Plymouth, MI 48170

SUITE SIZE: 1,755 Sq. Ft.

AVAILABLE: Immediately

FLOORPLAN: See page 2

LEASE RATE: Negotiable

LEASE TERM: 5 year term

DEMOGRAPHICS:

Plymouth, MI:

Population (2005): 1,214,361

Median household income (2005): \$64,022

Median house value (2005): \$245,269

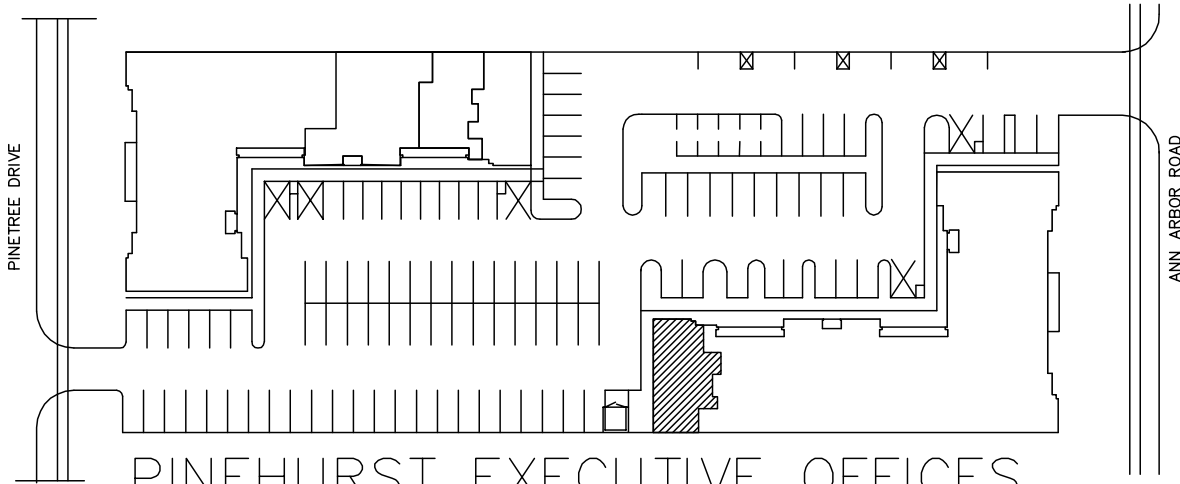


SUITE DESCRIPTION:

Medical Space Available

Suite features:

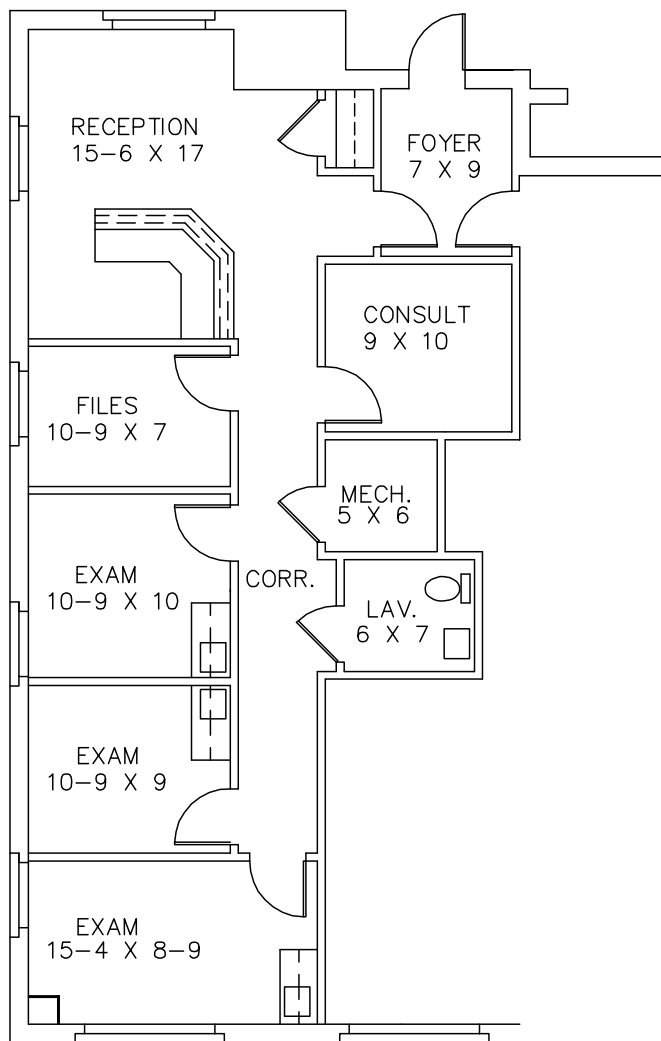
- A nice reception area, upon entry
- 3 exam rooms
- A file room
- A consulting room
- A private lavatory



PINEHURST EXECUTIVE OFFICES

44670 ANN ARBOR ROAD
 PLYMOUTH, MICHIGAN
 AVAILABLE FOR LEASE
 SUITE #100
 1,160 SQ.FT.

01-16-08-38/592



Beachum & Poeser

MANAGEMENT CORPORATION

CALL:
 BILL BEACHUM
 248-647-7500