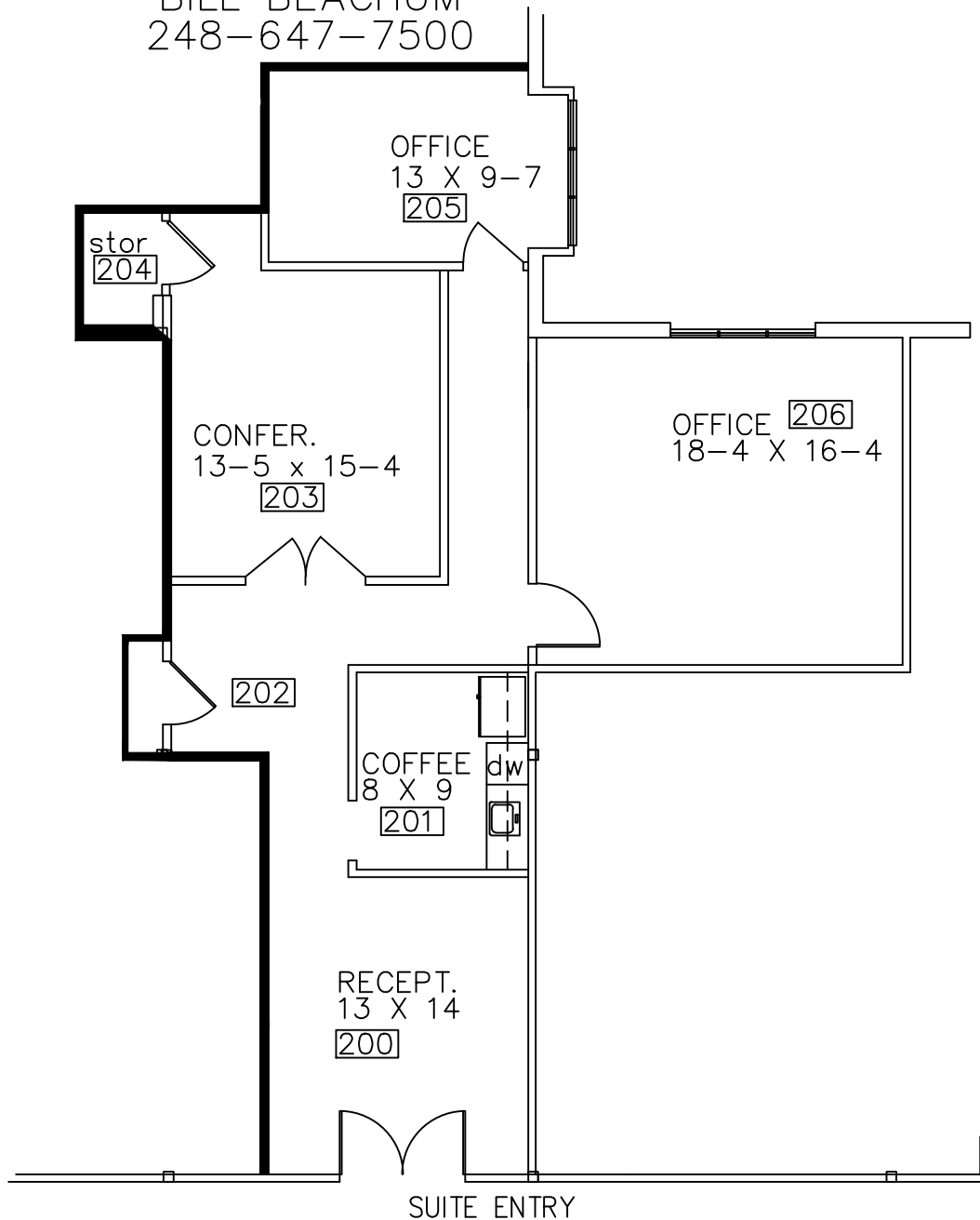


GOVERNORS PLACE
 33 BLOOMFIELD HILLS PARKWAY
 BLOOMFIELD HILLS, MICHIGAN
 AVAILABLE FOR LEASE
 APPROX. 1,398 R.S.F.
 SUITE 230
 1-26-2018

Beachum & Poeser

DEVELOPMENT & MANAGEMENT CO.

CONTACT:
 BILL BEACHUM
 248-647-7500



PARTIAL SECOND FLOOR PLAN

SCALE: 1/8"=1'-0"