

Bloomfield Hills - Governor's Place Building - 1,398 Sq. Ft



PROPERTY ADDRESS:

33 Bloomfield Hills Parkway
Suite 230
Bloomfield Hills, MI 48304

SUITE SIZE: 1,398 Sq. Ft.

AVAILABLE: Immediately

FLOORPLAN: See page 2

LEASE RATE: Negotiable

LEASE TERM: Negotiable

DEMOGRAPHICS:

Oakland County, MI:

Population (2015): 1,243,970

Median household income (2015): \$67,465

Median house value (2015): \$178,900

Bloomfield Hills, MI:

Population (2015): 42,112

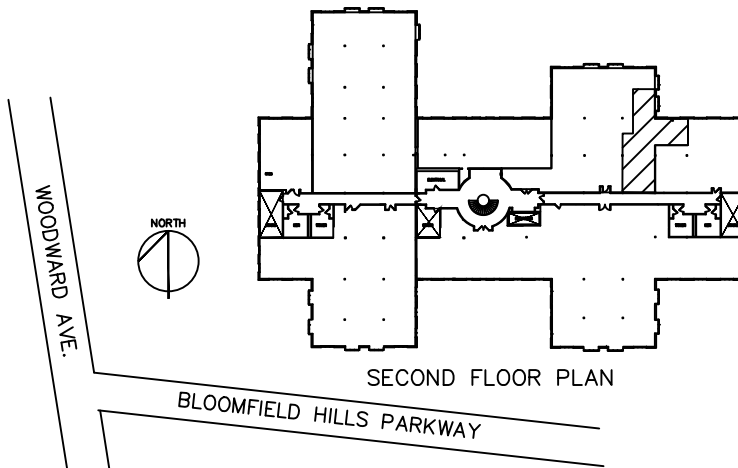
Median household income (2015): \$112,154

Median house value (2015): \$350,600



SUITE DESCRIPTION:

2nd floor suite available at the beautiful and prestigious Governor's Place Office Building. Suite features: nice sized reception upon entry; one (1) windowed office; one (1) non-windowed office; a conference room and a coffee room with sink, dishwasher and counter. Other features include: Windows that open; individual control over HVAC and plenty of convenient parking.

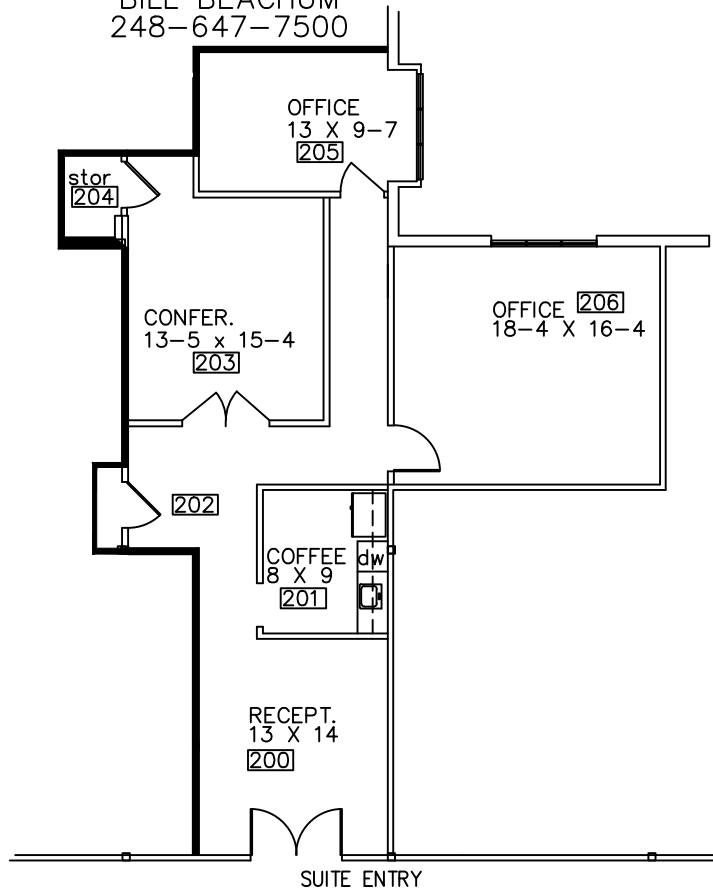


GOVERNORS PLACE
 33 BLOOMFIELD HILLS PARKWAY
 BLOOMFIELD HILLS, MICHIGAN
 AVAILABLE FOR LEASE
 APPROX. 1,398 R.S.F.
 SUITE 230
 1-26-2018

Beachum & Poeser

DEVELOPMENT & MANAGEMENT CO.

CONTACT:
 BILL BEACHUM
 248-647-7500



PARTIAL SECOND FLOOR PLAN

SCALE: 1/8"=1'-0"