

## Bloomfield Hills - Governor's Place Building - 4,045 Sq. Ft



### PROPERTY ADDRESS:

33 Bloomfield Hills Parkway  
Suite 260  
Bloomfield Hills, MI 48304

**SUITE SIZE:** 4,045 Sq. Ft.

**AVAILABLE:** Immediately

**FLOORPLAN:** See page 2

**LEASE RATE:** Negotiable

**LEASE TERM:** 5 year term

### DEMOGRAPHICS:

#### *Oakland County, MI:*

Population (2015): 1,243,970

Median household income (2015): \$67,465

Median house value (2015): \$178,900

#### *Bloomfield Hills, MI:*

Population (2015): 42,112

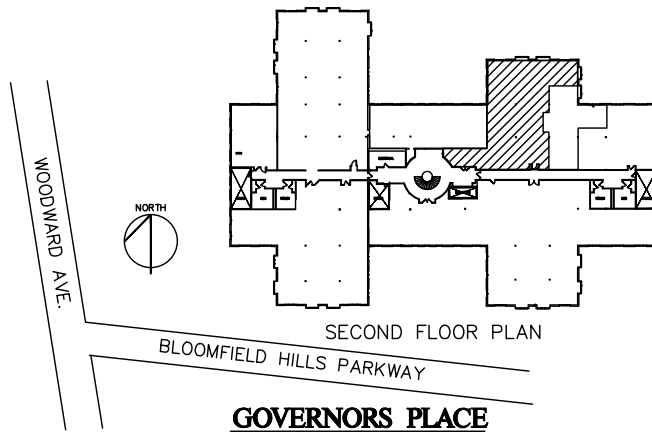
Median household income (2015): \$112,154

Median house value (2015): \$350,600



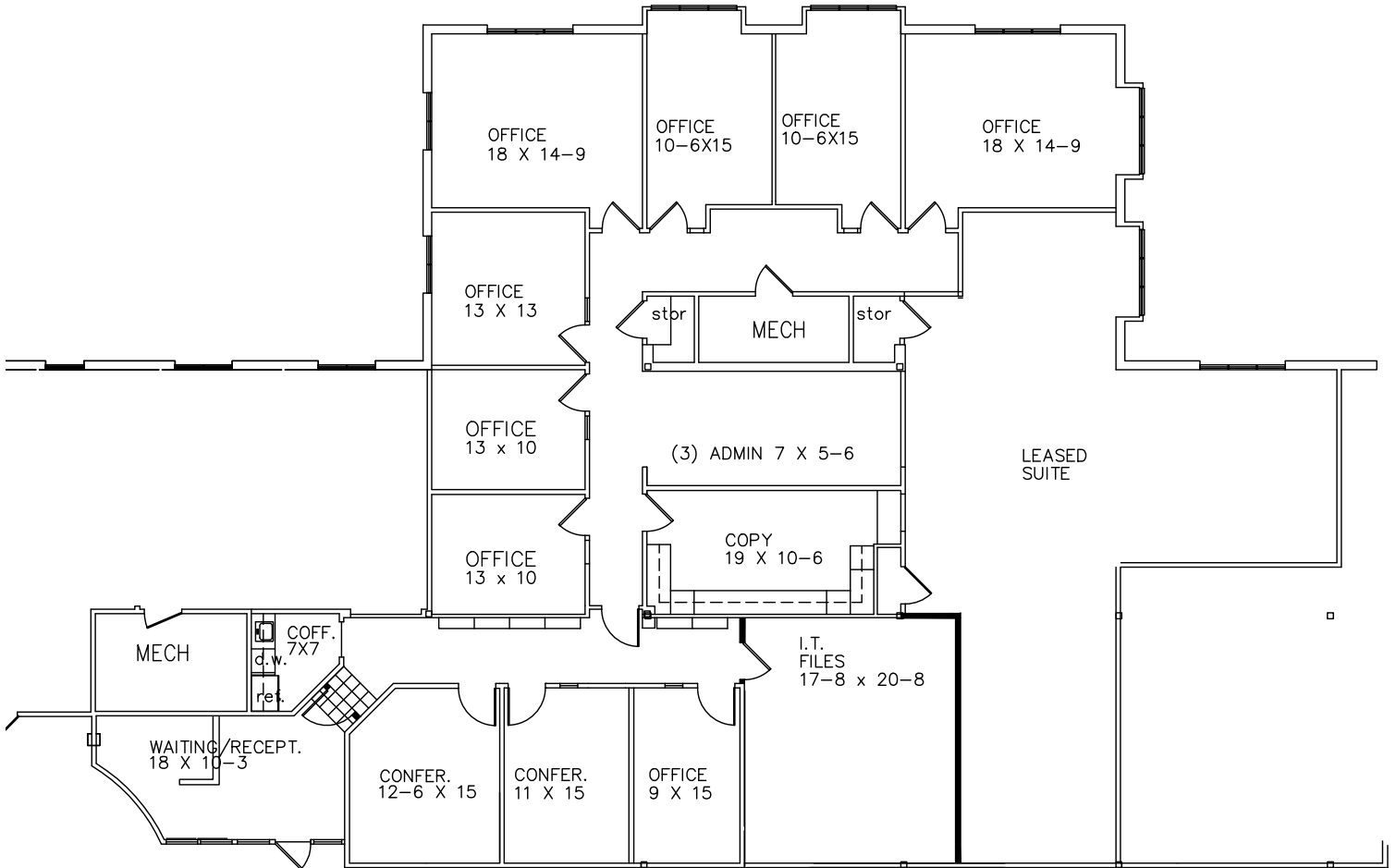
### SUITE DESCRIPTION:

Beautiful large 2nd floor suite available in the prestigious Governor's Place Executive Offices in Bloomfield Hills. Suite features a waiting /reception upon entry to suite, 5 windowed offices – 2 of which are corner offices, 4 non-windowed offices, 2 conference rooms, a large admin area, a large file room, a separate copy room, a coffee room with sink and counter, and private in-suite lavatories. Other features include windows that open, individual control over HVAC and plenty of convenient parking.



**GOVERNORS PLACE**

33 BLOOMFIELD HILLS PARKWAY  
 BLOOMFIELD HILLS, MI.  
 AVAILABLE FOR LEASE  
 SUITE 260  
 APPROX. 4,045 R.S.F.  
 10-23-19



PARTIAL SECOND FLOOR PLAN

SCALE: 1/8"=1'-0"

*Beachum & Poeser*

DEVELOPMENT & MANAGEMENT CORPORATION

CALL:

BILL BEACHUM  
 248-647-7500