

Bloomfield Hills - Governor's Place Building - 3,060 Sq. Ft



PROPERTY ADDRESS:

33 Bloomfield Hills Parkway
Suite 290
Bloomfield Hills, MI 48304

SUITE SIZE: 3,060 Sq. Ft.

AVAILABLE: Immediately

FLOORPLAN: See page 2

LEASE RATE: Negotiable

LEASE TERM: 5 year term

DEMOGRAPHICS:

Oakland County, MI:

Population (2015): 1,243,970

Median household income (2015): \$67,465

Median house value (2015): \$178,900

Bloomfield Hills, MI:

Population (2015): 42,112

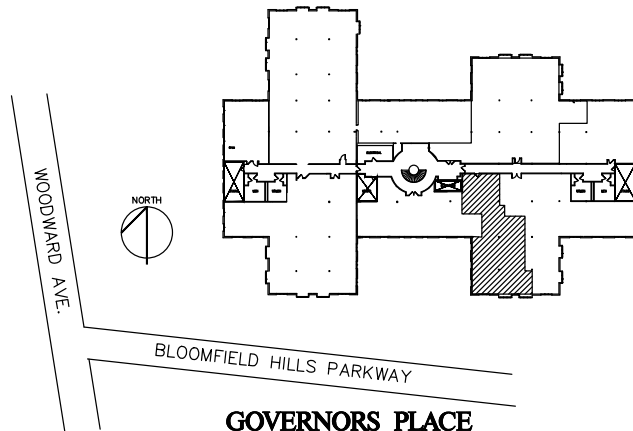
Median household income (2015): \$112,154

Median house value (2015): \$350,600



SUITE DESCRIPTION:

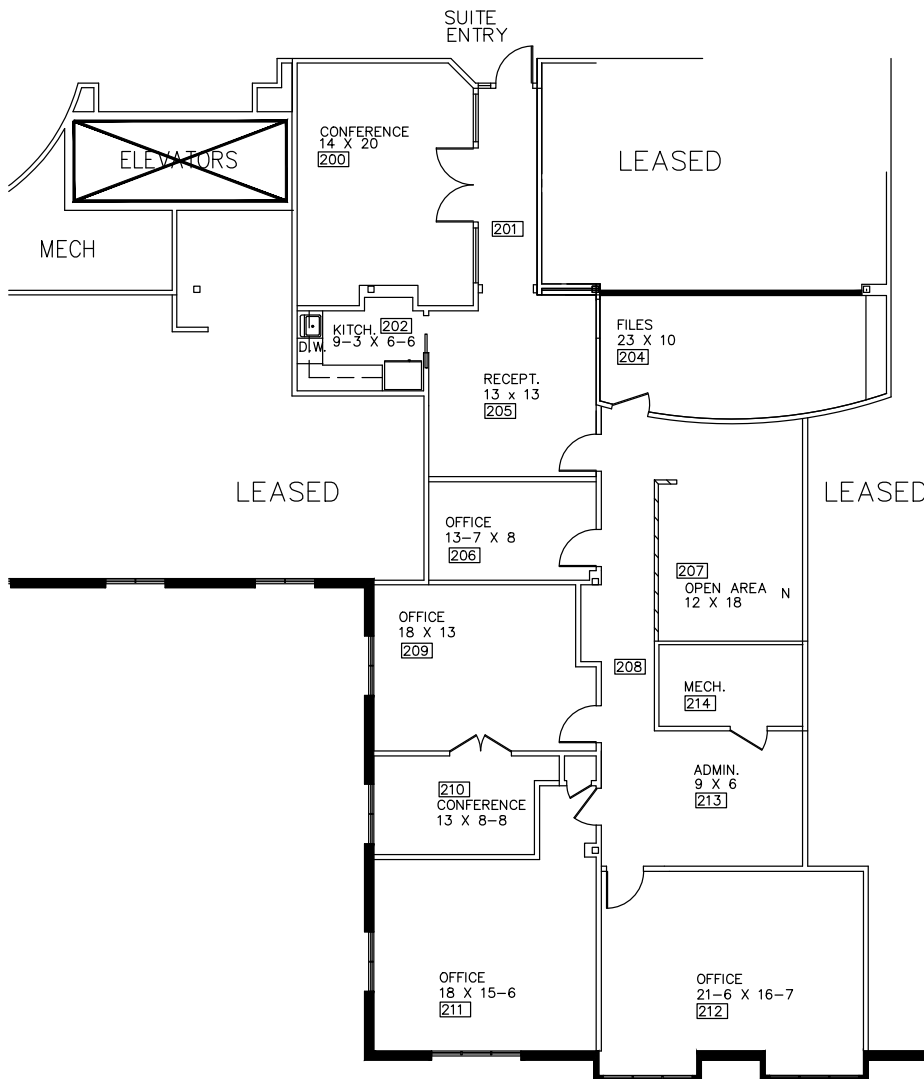
Large suite available in the prestigious Governor's Place Executive Office Building. Suite features: 3 windowed offices; 1 non-windowed office; a reception area; 2 conference rooms, one of which is windowed; a file room; an open area, to use as you need; and a kitchen with sink and countertop. Other features include individual control over the HVAC; windows that open and plenty of convenient parking.



GOVERNORS PLACE

33 BLOOMFIELD HILLS PARKWAY
 BLOOMFIELD HILLS, MI.
 SUITE 290
 APPROX. 3,060 R.S.F.
 AVAILABLE FOR LEASE
 AS-BUILT

7-31-2018



Beachum & Poeser

MANAGEMENT CORPORATION

CALL:

BILL BEACHUM
 248-647-7500
 < PLAN NOT TO SCALE >