

Bingham Farms - Georgetowne 31600 Building - 1,680 Sq. Ft



PROPERTY ADDRESS:
31600 Telegraph Road
Suite 100
Bingham Farms, MI 48025

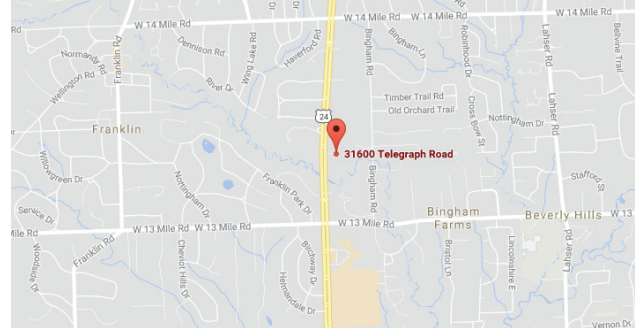
SUITE SIZE: 1,680 Sq. Ft.
AVAILABLE: Immediately
FLOORPLAN: See page 2
LEASE RATE: Negotiable
LEASE TERM: Negotiable
DEMOGRAPHICS:

Oakland County, MI:

Population (2015): 1,243,970
Median household income (2015): \$67,465
Median house value (2015): \$178,900

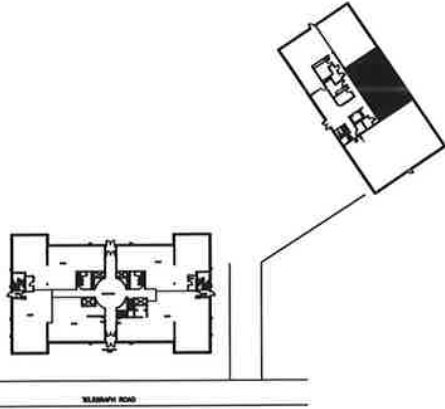
Bingham Farms, MI:

Population (2015): 1,133
Median household income (2015): \$102,083
Median house value (2015): \$361,500

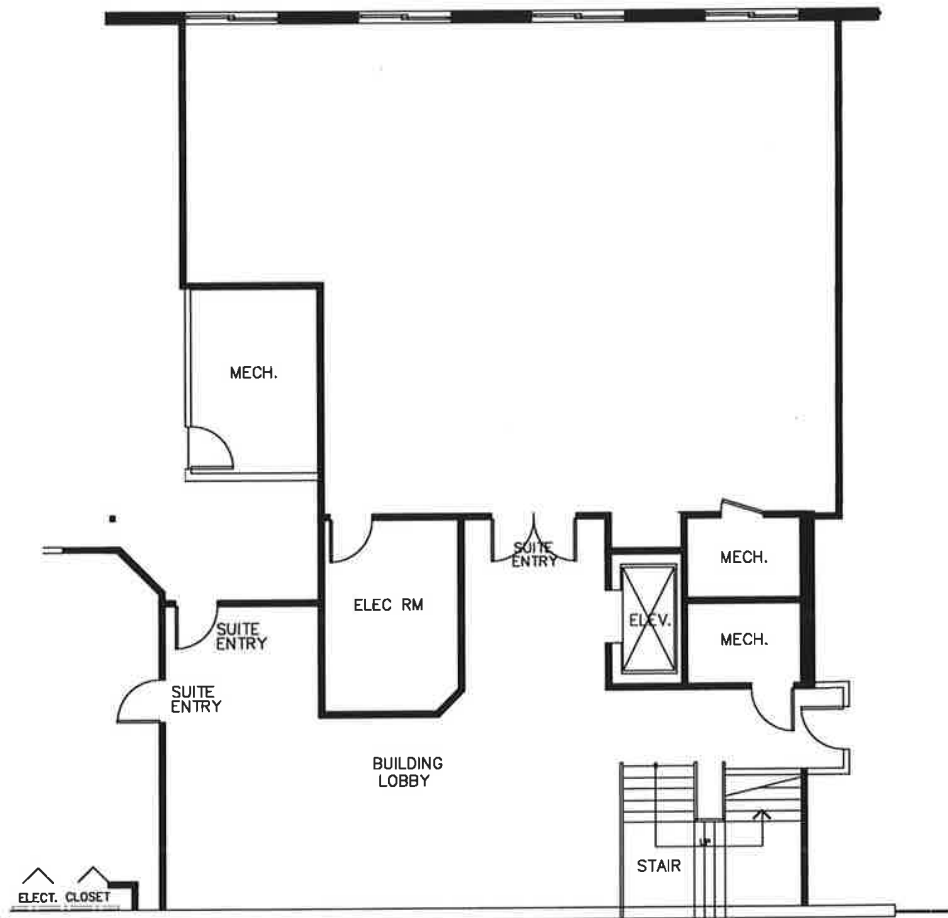


SUITE DESCRIPTION:

Terrace level suite available featuring four windowed door walls that provide a beautiful, serene setting. Suite is an open space waiting to be customized to your individual needs. There is also individual control over the HVAC and plenty of convenient parking just steps from building entrance.



GEORGETOWNE EXECUTIVE OFFICES
 31600 TELEGRAPH ROAD BINGHAM FARMS, MI
AVAILABLE FOR LEASE
SUITE # 100
1,680 R.S.F.
(TERRACE LEVEL WALK-OUT)
 8-22-2017



Beachum & Roeser

DEVELOPMENT & MANAGEMENT CORPORATION

CALL:
 BILL BEACHUM
 248-647-7500