

Bingham Farms - Georgetowne 31600 Building - 895 Sq. Ft



PROPERTY ADDRESS:
31600 Telegraph Road
Suite 130
Bingham Farms, MI 48025

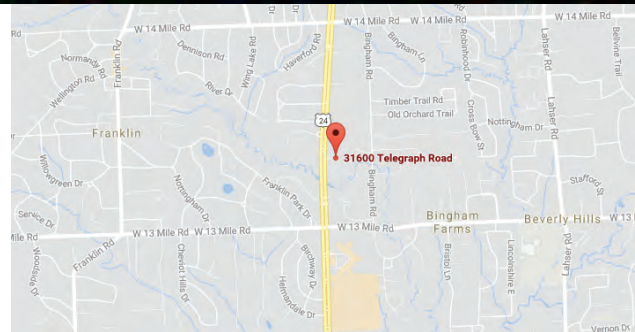
SUITE SIZE: 895 Sq. Ft.
AVAILABLE: Immediately
FLOORPLAN: See page 2
LEASE RATE: Negotiable
LEASE TERM: 5 year term
DEMOGRAPHICS:

Oakland County, MI:

Population (2015): 1,243,970
Median household income (2015): \$67,465
Median house value (2015): \$178,900

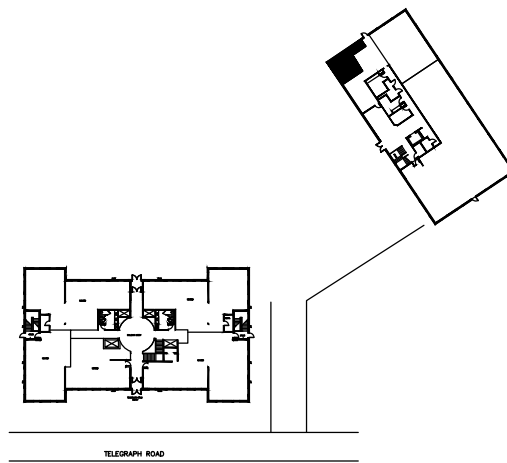
Bingham Farms, MI:

Population (2015): 1,133
Median household income (2015): \$102,083
Median house value (2015): \$361,500

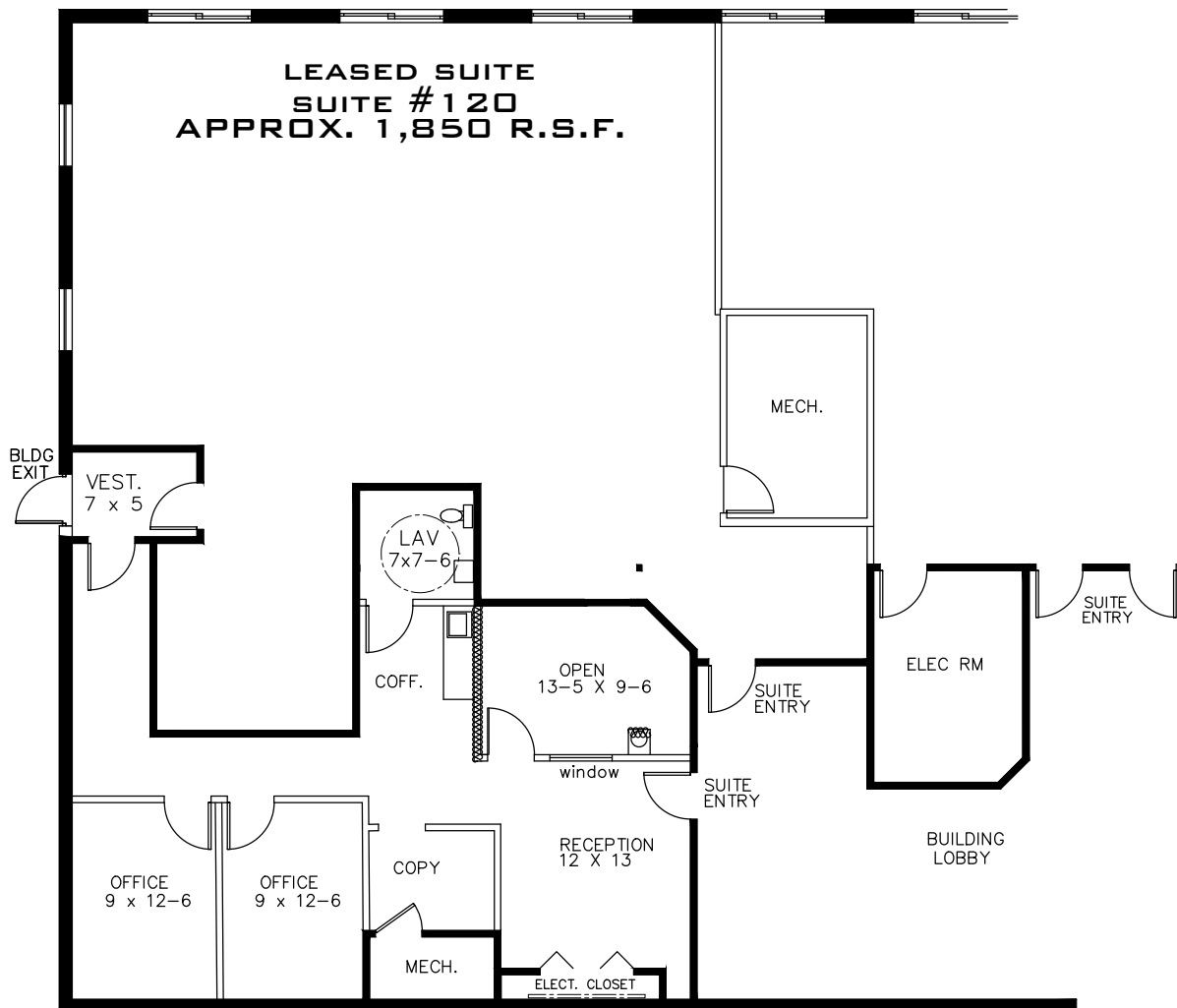


SUITE DESCRIPTION:

Nice corner suite available that is perfect for a small 2-3 person office. Suite features: a reception area upon entry with a windowed counter; 2 offices; an open area; a copy room; a breakroom and a private lavatory. Other features include: windows that open; individual control over the HVAC and plenty of convenient parking just steps from building entrance.



GEORGETOWNE EXECUTIVE OFFICES
 31600 TELEGRAPH ROAD BINGHAM FARMS, MI
 AVAILABLE FOR LEASE
 8-17-2018



HOME HEALTH CARE
SUITE #130
APPROX. 895 U.S.F.
(NON WINDOWED)
8-17-2018

Beachum & Poeser

DEVELOPMENT & MANAGEMENT CORPORATION

CALL:
 BILL BEACHUM
 248-647-7500