

Bingham Farms - Georgetowne 31700 Building - 3,519 Sq. Ft



PROPERTY ADDRESS:

31700 Telegraph Road
Suite 110 and 120 (combined)
Bingham Farms, MI 48025

SUITE SIZE: 3,519 Sq. Ft.

AVAILABLE: Immediately

FLOORPLAN: See page 2

LEASE RATE: Negotiable

LEASE TERM: 5 year term

DEMOGRAPHICS:

Oakland County, MI:

Population (2015): 1,243,970

Median household income (2015): \$67,465

Median house value (2015): \$178,900

Bingham Farms, MI:

Population (2015): 1,133

Median household income (2015): \$102,083

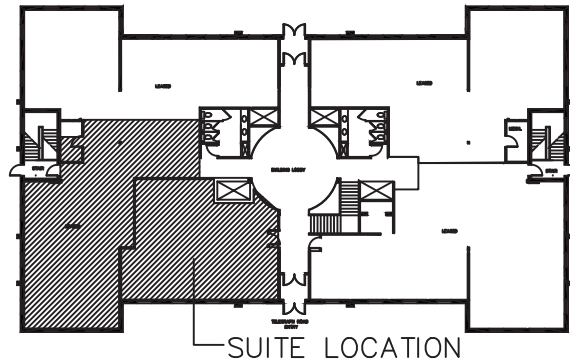
Median house value (2015): \$361,500



SUITE DESCRIPTION:

A nice corner suite available at the beautiful Georgetowne Executive Office Building. Suite features: Four (4) windowed offices; 3 work cubicles; a waiting room upon entrance; a nicely sized conference room; and a kitchen with a sink and countertop. Other features include: windows that open; individual control over HVAC and plenty of convenient parking just steps from building entrance.

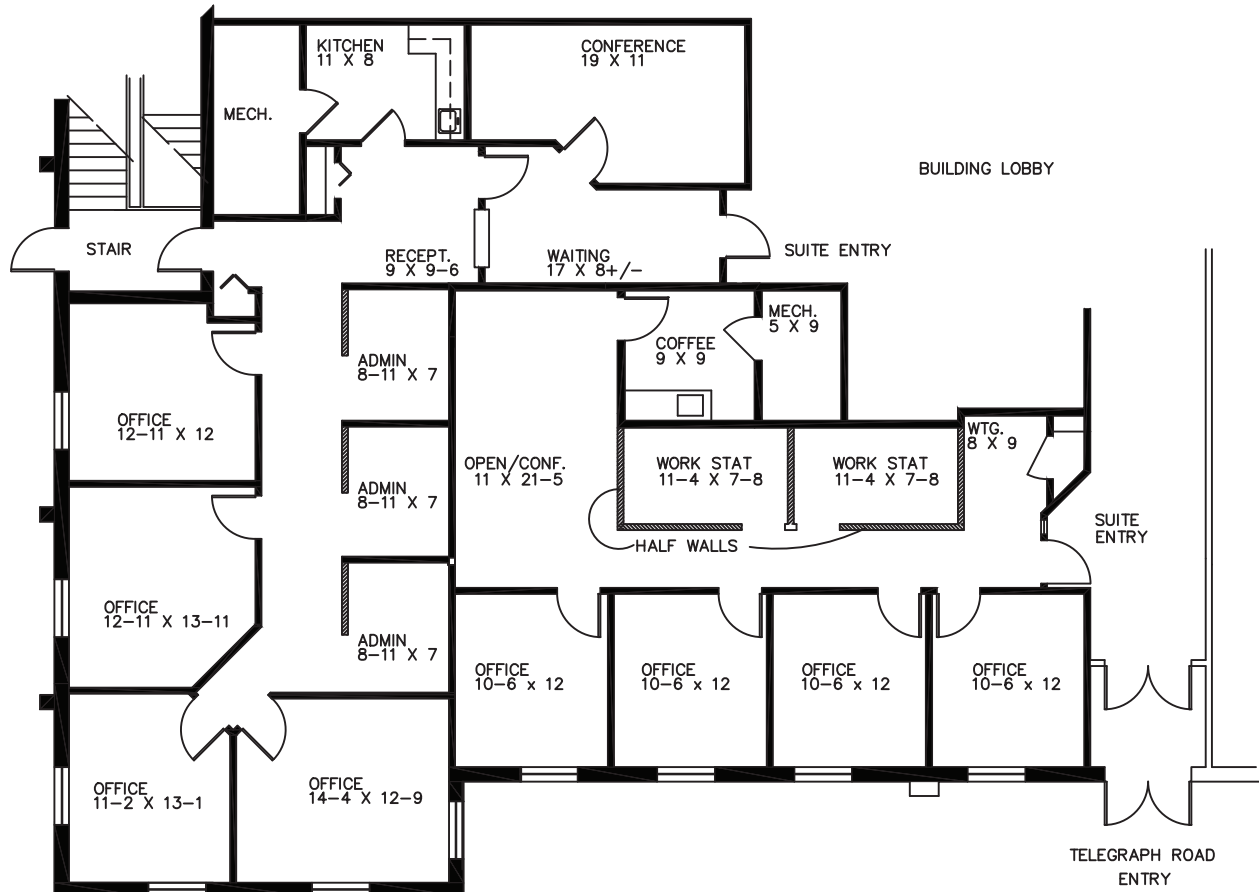
This suite could also be combined with Suite 110 for a total of 3,519sf and would add another four (4) windowed offices; two (2) more work stations; an open/conference area and another coffee/break room.



TELEGRAPH ROAD

GEORGETOWNE EXECUTIVE OFFICES

31700 TELEGRAPH ROAD BINGHAM FARMS, MI
 AVAILABLE FOR LEASE
 FIRST FLOOR SPACE
 SUITE #110/120 3,519 R.S.F.
 3-29-2018



PARTIAL FIRST FLOOR PLAN
 SCALE: 1/8"=1'-0"

Beachum & Poeser

DEVELOPMENT & MANAGEMENT CORPORATION

CALL:
 BILL BEACHUM
 248-647-7500