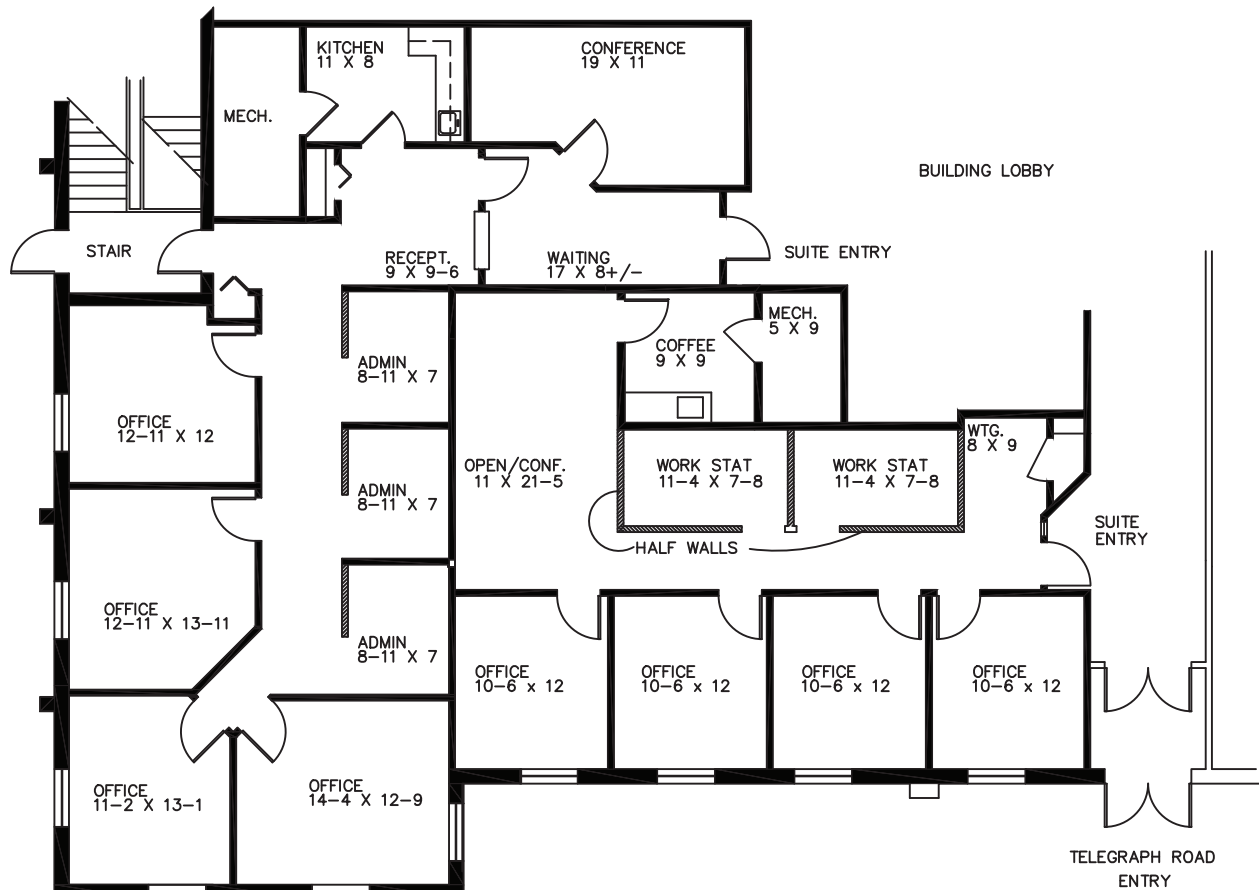


TELEGRAPH ROAD

GEORGETOWNE EXECUTIVE OFFICES

31700 TELEGRAPH ROAD BINGHAM FARMS, MI
 AVAILABLE FOR LEASE
 FIRST FLOOR SPACE
 SUITE #110/120 3,519 R.S.F.
 3-29-2018



PARTIAL FIRST FLOOR PLAN
 SCALE: 1/8"=1'-0"

Beachum & Poeser

DEVELOPMENT & MANAGEMENT CORPORATION

CALL:
 BILL BEACHUM
 248-647-7500