

Bingham Farms - Georgetowne 31700 Building - 2,041 Sq. Ft



PROPERTY ADDRESS:

31700 Telegraph Road
Suite 120
Bingham Farms, MI 48025

SUITE SIZE: 2,041 Sq. Ft.
AVAILABLE: Immediately
FLOORPLAN: See page 2
LEASE RATE: Negotiable
LEASE TERM: 5 year term
DEMOGRAPHICS:

Oakland County, MI:

Population (2015): 1,243,970
Median household income (2015): \$67,465
Median house value (2015): \$178,900

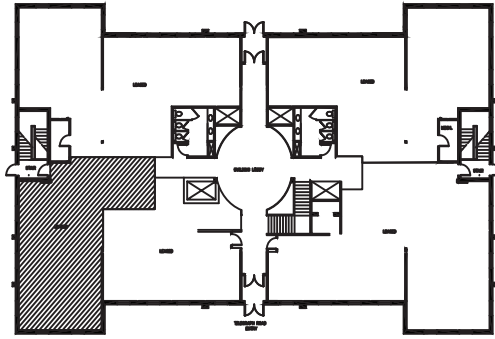
Bingham Farms, MI:

Population (2015): 1,133
Median household income (2015): \$102,083
Median house value (2015): \$361,500



SUITE DESCRIPTION:

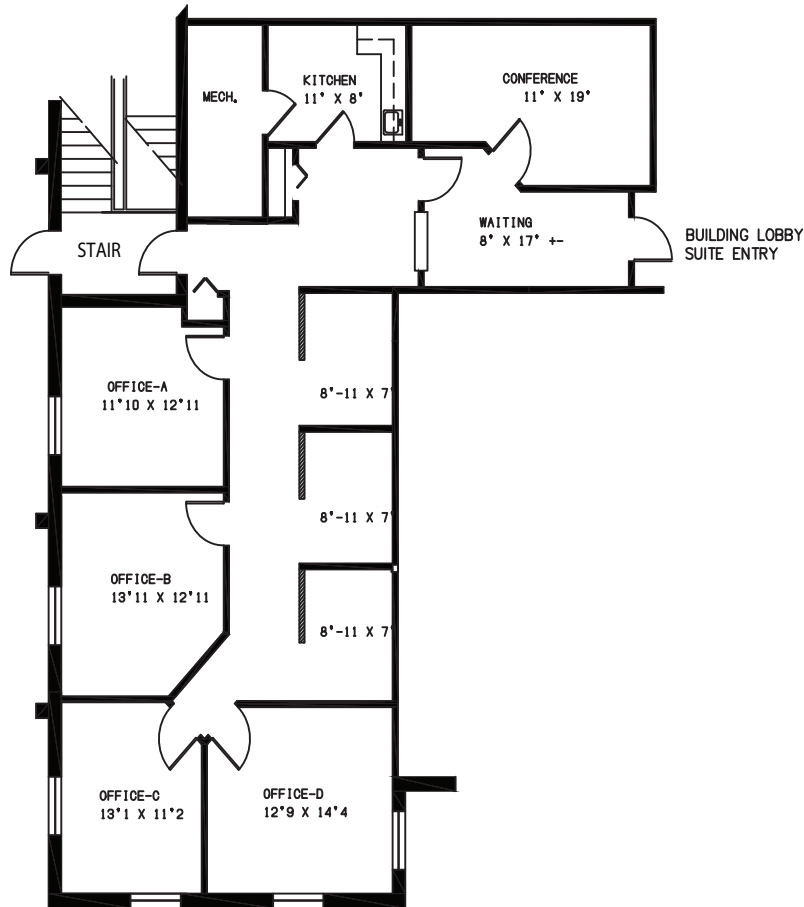
A nice corner suite available at the beautiful Georgetowne Executive Office Building. Suite features: Four (4) windowed offices; 3 work cubicles; a waiting room upon entrance; a nicely sized conference room; and a kitchen with a sink and countertop. Other features include: windows that open; individual control over HVAC and plenty of convenient parking just steps from building entrance. This suite could also be combined with Suite 110 for a total of 3,519sf and would add another four (4) windowed offices; two (2) more work stations; an open/conference area and another coffee/break room.



TELEGRAPH ROAD

GEORGETOWNE EXECUTIVE OFFICES

31700 TELEGRAPH ROAD - BINGHAM FARMS, MI
FIRST FLOOR SPACE
AVAILABLE FOR LEASE
SUITE #120
2,041 R.S.F.



PARTIAL FIRST FLOOR PLAN

SCALE: 1/8"=1'-0"

Beachum & Poeser

DEVELOPMENT & MANAGEMENT CORPORATION

CALL:
BILL BEACHUM
248-647-7500