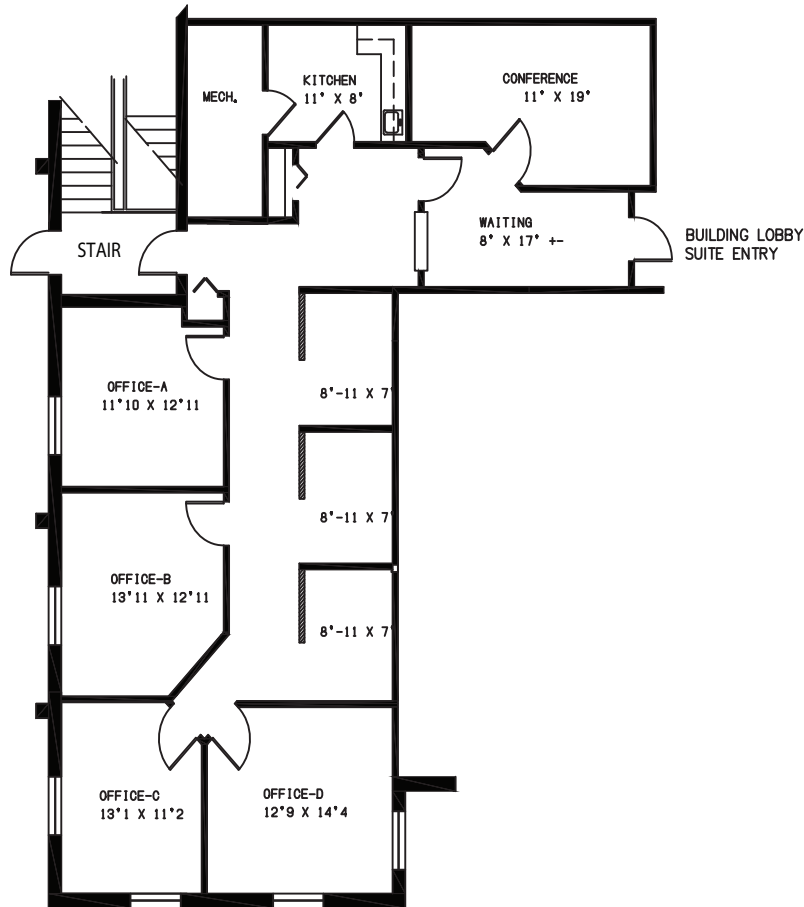


TELEGRAPH ROAD

GEORGETOWNE EXECUTIVE OFFICES

31700 TELEGRAPH ROAD - BINGHAM FARMS, MI
FIRST FLOOR SPACE
AVAILABLE FOR LEASE
SUITE #120
2,041 R.S.F.



PARTIAL FIRST FLOOR PLAN

SCALE: 1/8"=1'-0"

Beachum & Poeser

DEVELOPMENT & MANAGEMENT CORPORATION

CALL:
BILL BEACHUM
248-647-7500