

Bingham Farms - Georgetowne 31700 Building - 4,235 Sq. Ft



PROPERTY ADDRESS:

31700 Telegraph Road
Suite 220
Bingham Farms, MI 48025

SUITE SIZE: 4,235 Sq. Ft.
AVAILABLE: Immediately
FLOORPLAN: See page 2
LEASE RATE: Negotiable
LEASE TERM: Negotiable
DEMOGRAPHICS:

Oakland County, MI:

Population (2015): 1,243,970
Median household income (2015): \$67,465
Median house value (2015): \$178,900

Bingham Farms, MI:

Population (2015): 1,133
Median household income (2015): \$102,083
Median house value (2015): \$361,500

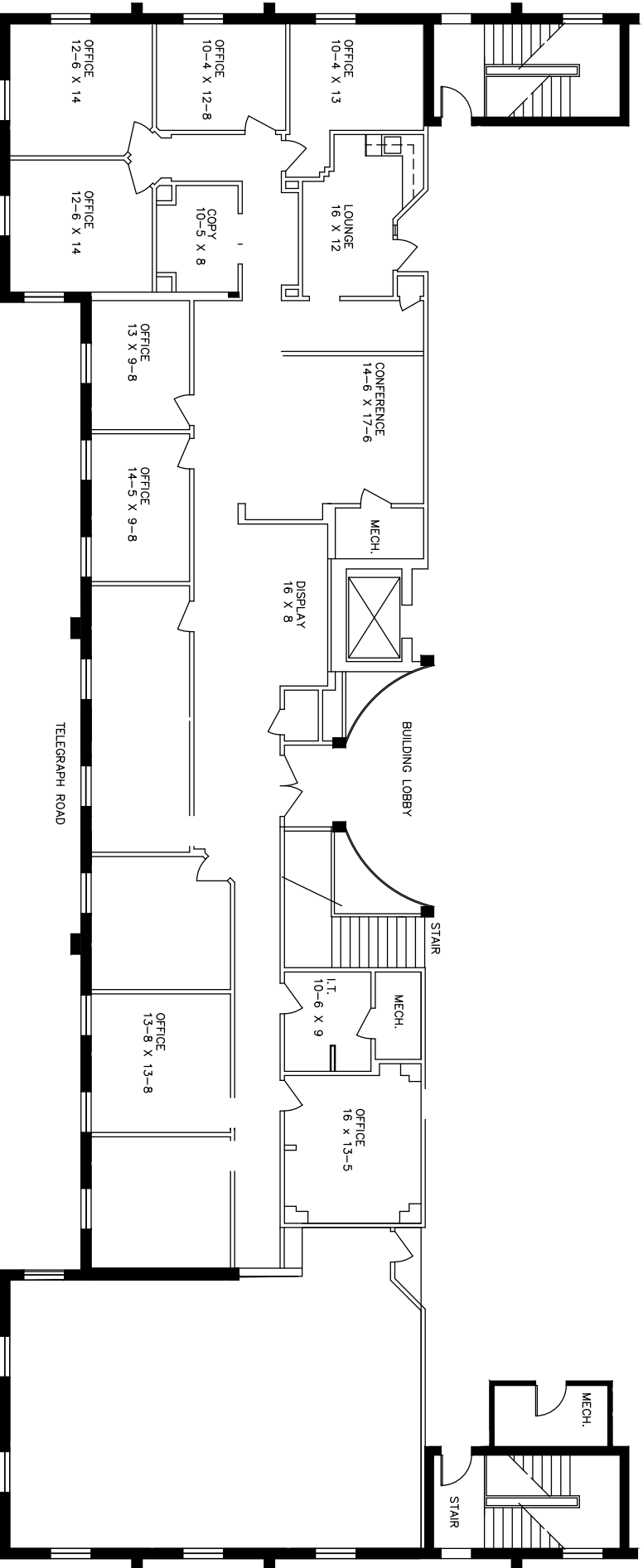


SUITE DESCRIPTION:

Large 2nd floor suite available – located right off the top of the beautiful spiral staircase.

Suite features:

11 windowed offices, 1 non-windowed office, Large conference room, a display area, copy room, I.T. room, an employee lounge with sink & countertop. Other features include: Windows that open; individual control over HVAC and plenty of convenient parking, just steps from building entrance.



TELEGRAPH ROAD



DEVELOPMENT & MANAGEMENT CORPORATION



CALL:
 BILL BEACHUM
 248-647-7500