

Bingham Farms - Georgetowne 31700 Building - 1,478 Sq. Ft



PROPERTY ADDRESS:

31700 Telegraph Road
Suite 110
Bingham Farms, MI 48025

SUITE SIZE: 1,478 Sq. Ft.
AVAILABLE: Immediately
FLOORPLAN: See page 2
LEASE RATE: Negotiable
LEASE TERM: Negotiable
DEMOGRAPHICS:

Oakland County, MI:

Population (2015): 1,243,970
Median household income (2015): \$67,465
Median house value (2015): \$178,900

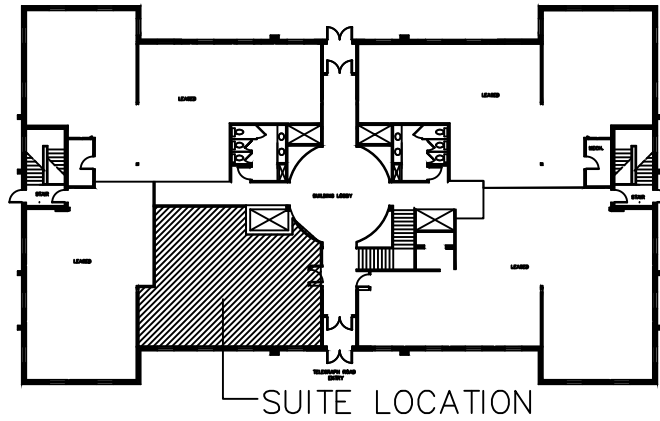
Bingham Farms, MI:

Population (2015): 1,133
Median household income (2015): \$102,083
Median house value (2015): \$361,500



SUITE DESCRIPTION:

Nice suite that features 4 windowed offices; a large corner conference room; a coffee area with sink and counter; a copy room; and two (2) half walled work stations. Other features include: Windows that open; individual control over the HVAC and plenty of parking just steps from building entrance.



TELEGRAPH ROAD

GEORGETOWNE EXECUTIVE OFFICES

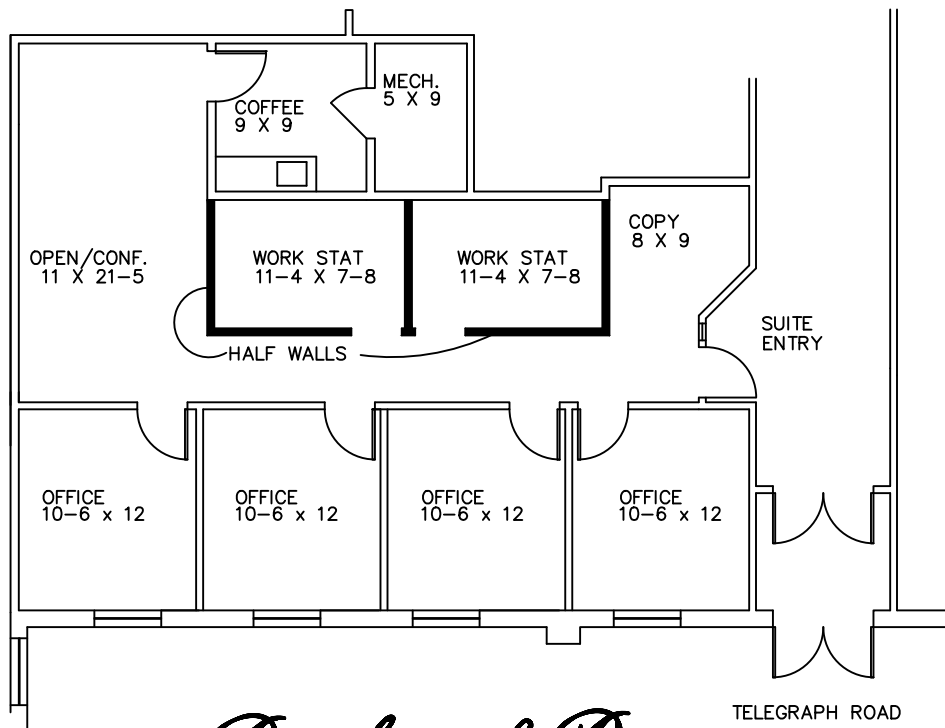
31700 TELEGRAPH ROAD BINGHAM FARMS, MI

AVAILABLE FOR LEASE

FIRST FLOOR SPACE

SUITE # 110 1,478 R.S.F.

11-9-2012



Beachum & Poeser

TELEGRAPH ROAD
ENTRY

DEVELOPMENT & MANAGEMENT CORPORATION

CALL:

BILL BEACHUM
248-647-7500