

Bingham Farms - Georgetowne 31700 Building - 1,562 Sq. Ft



PROPERTY ADDRESS:

31700 Telegraph Road
Suite 250
Bingham Farms, MI 48025

SUITE SIZE: 1,562 Sq. Ft.

AVAILABLE: Immediately

FLOORPLAN: See page 2

LEASE RATE: Negotiable

LEASE TERM: 5 year term

DEMOGRAPHICS:

Oakland County, MI:

Population (2015): 1,243,970
Median household income (2015): \$67,465
Median house value (2015): \$178,900

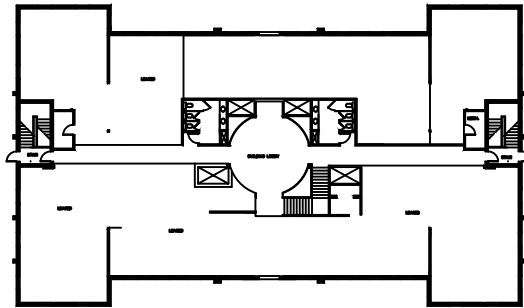
Bingham Farms, MI:

Population (2015): 1,133
Median household income (2015): \$102,083
Median house value (2015): \$361,500



SUITE DESCRIPTION:

Nice 2nd floor suite available at the beautiful Georgetowne Office Building. Suite currently features: three (3) nicely sized windowed offices; a large windowed conference room; a lounge with sink and countertop and a private lavatory. Other features include: windows that open; individual control over HVAC and plenty of convenient parking just steps from building entrance.

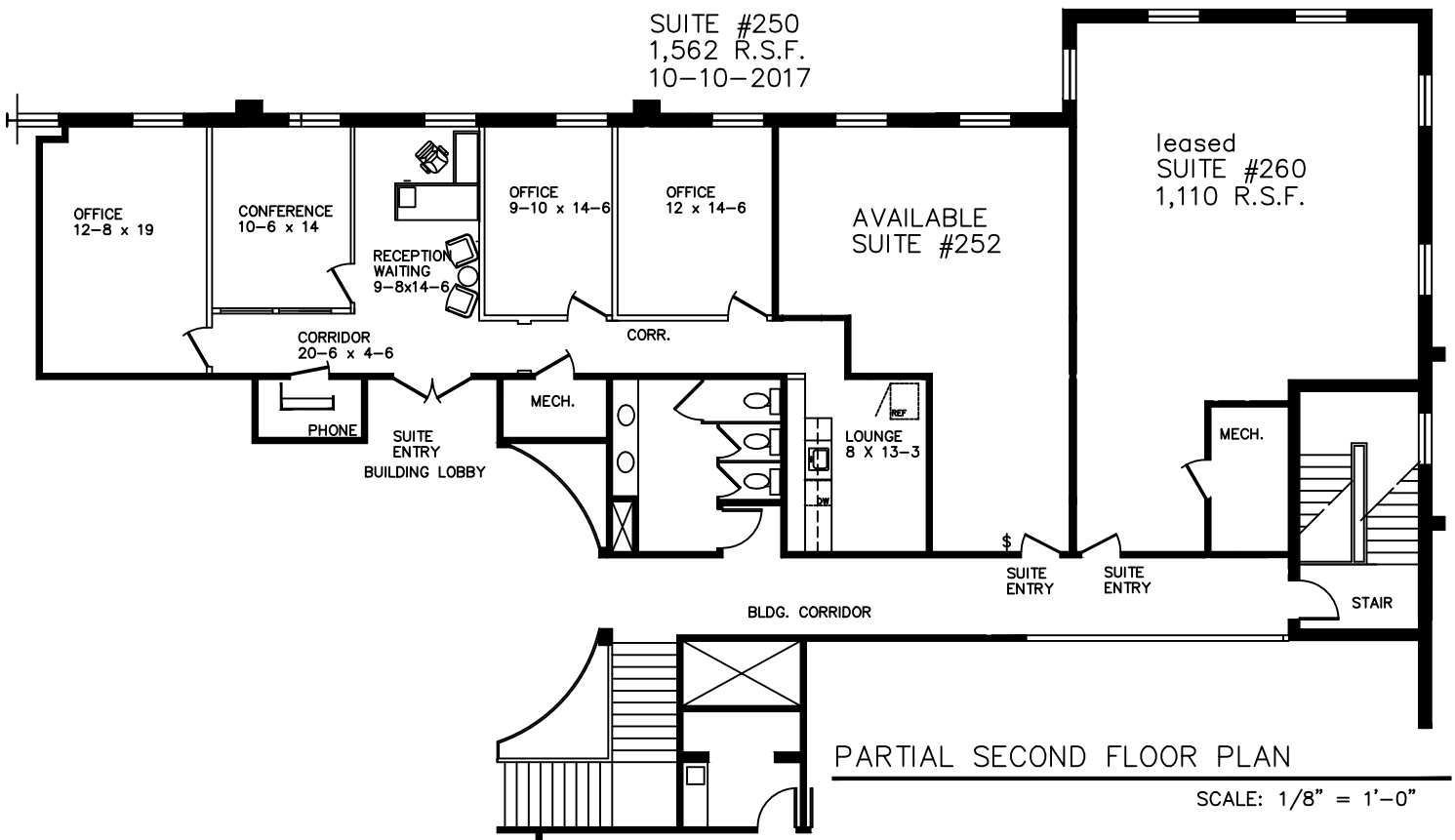


TELEGRAPH ROAD

GEORGETOWNE EXECUTIVE OFFICES

31700 TELEGRAPH ROAD – BINGHAM FARMS, MI
 SECOND FLOOR SUITE
 AVAILABLE FOR LEASE
 SPACE PLAN "B"

SUITE #250
 1,562 R.S.F.
 10-10-2017



PARTIAL SECOND FLOOR PLAN

SCALE: 1/8" = 1'-0"

Beachum & Poeser

DEVELOPMENT & MANAGEMENT CORPORATION

CALL:
 BILL BEACHUM
 248-647-7500