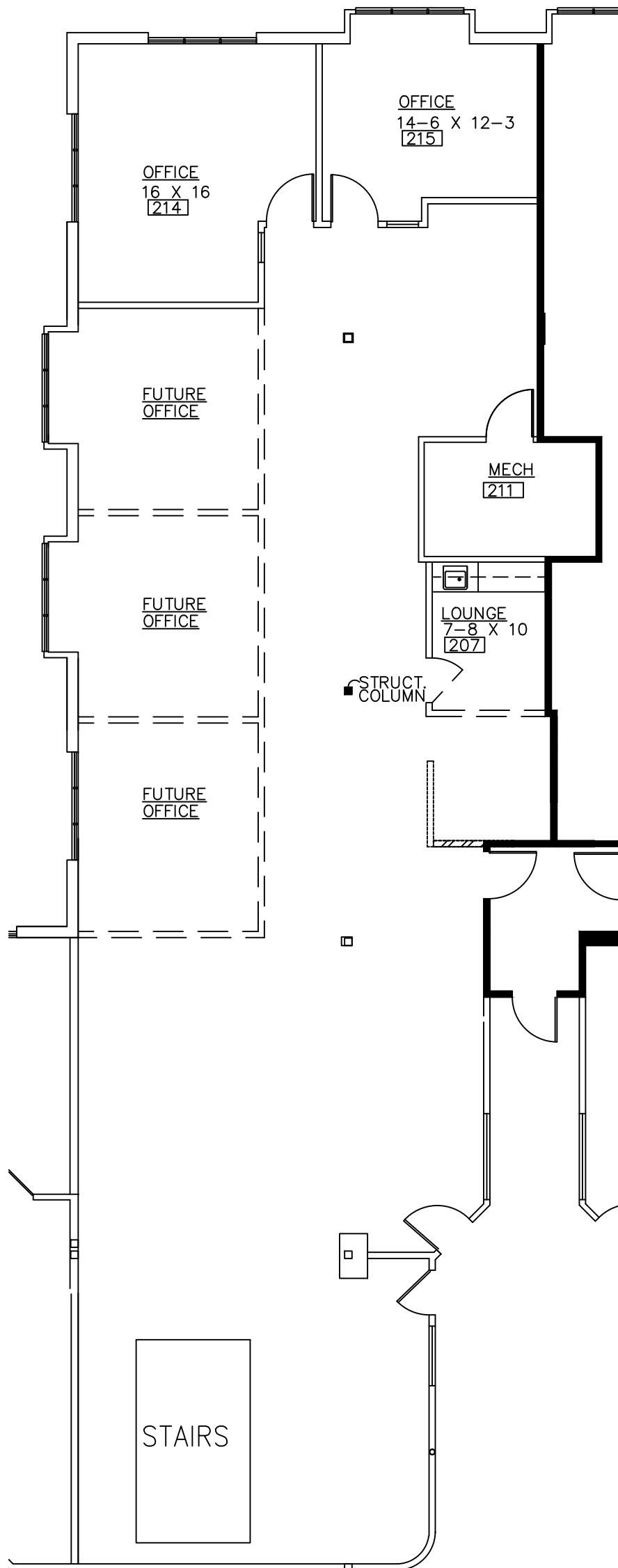
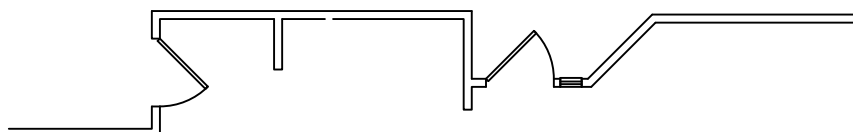


BEACHUM AND ROESER
GOVERNORS PLACE

33 BLOOMFIELD HILLS PARKWAY
BLOOMFIELD HILLS, MICHIGAN
APPROX. 3,439 R.SQ.FT.
SUITE #240



BLDG. CORRIDOR



Beachum & Roeser

MANAGEMENT CORPORATION

CALL:
BILL BEACHUM
248-647-7500