

## Troy, MI - Heritage Square - Suite 1775 - 1,310 Sq. Ft



### PROPERTY ADDRESS:

1719 - 1779 West Big Beaver Rd.  
Troy, MI 48084

**SUITE SIZE:** 1,310 Sq. Ft.

**AVAILABLE:** Immediately

**FLOORPLAN:** See page 2

**LEASE RATE:** Negotiable

**LEASE TERM:** 5 year term

### DEMOGRAPHICS:

#### *Oakland County, MI:*

Population (2015): 1,243,970

Median household income (2015): \$67,465

Median house value (2015): \$178,900

#### *Troy, MI:*

Population (2017): 83,813

Median household income (2017): \$95,825

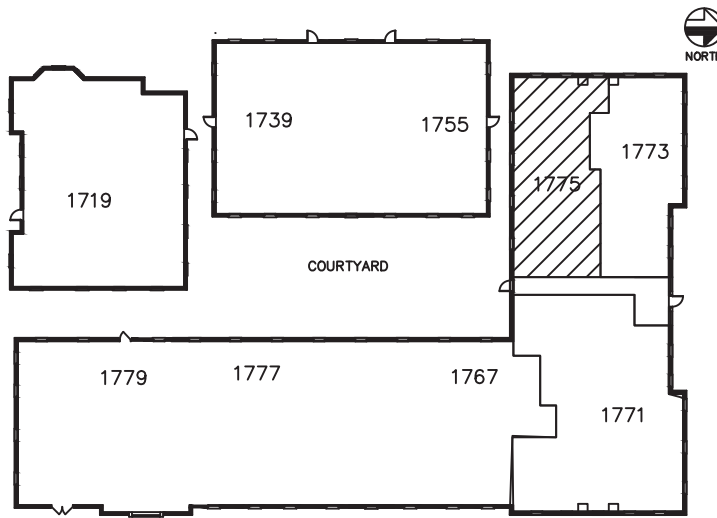
Median house value (2017): \$297,600



### SUITE DESCRIPTION:

- A nice waiting area, upon entering
- Corner, windowed conference room
- 3 windowed offices, one corner office
- Break room with sink and counter
- A large open area.

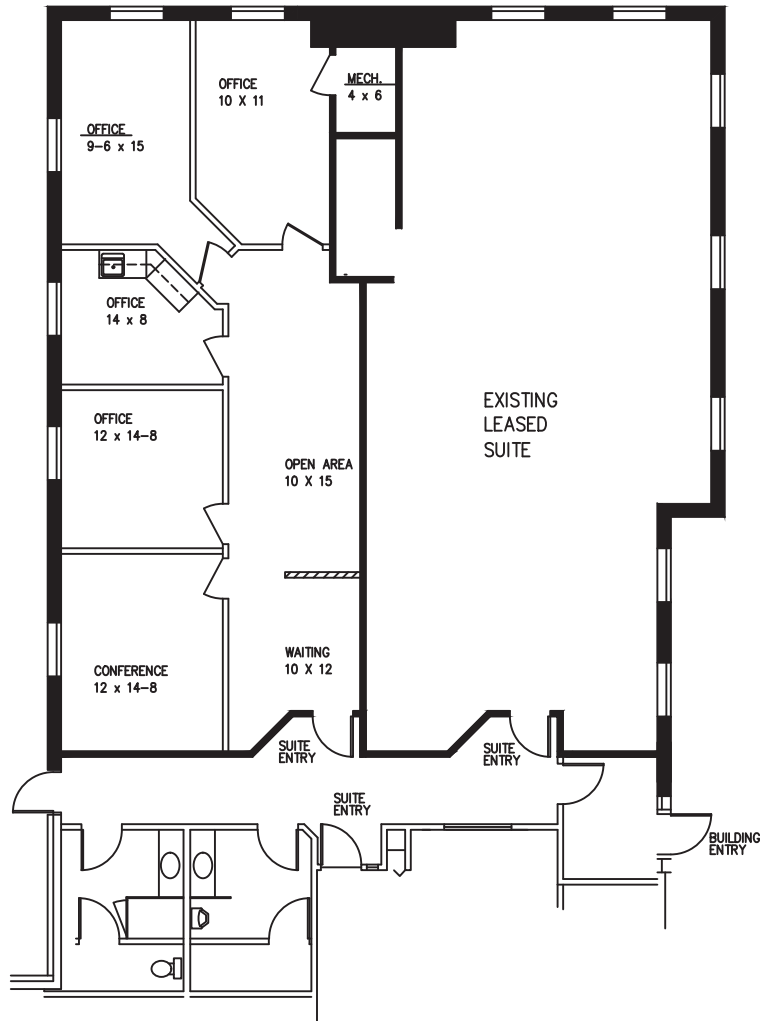
Other features include: individual control over HVAC; windows that open and plenty of convenient parking.



## HERITAGE SQUARE

1775 WEST BIG BEAVER, TROY

APPROX. 1,310 R. SQ.FT.



### LEASING FLOOR PLAN

*Beachum & Proctor*

**DEVELOPMENT AND MANAGEMENT CORPORATION**

CALL:  
BILL BEACHUM  
248-647-7500