

Bingham Farms - Jamestowne 31000 Building - 1,135 Sq. Ft



PROPERTY ADDRESS:

31000 Telegraph Road
Suite 145
Bingham Farms, MI 48025

SUITE SIZE: 1,135 Sq. Ft.

AVAILABLE: Immediately

FLOORPLAN: See page 2

LEASE RATE: Negotiable

LEASE TERM: Negotiable

DEMOGRAPHICS:

Oakland County, MI:

Population (2015): 1,243,970
Median household income (2015): \$67,465
Median house value (2015): \$178,900

Bingham Farms, MI:

Population (2015): 1,133
Median household income (2015): \$102,083
Median house value (2015): \$361,500

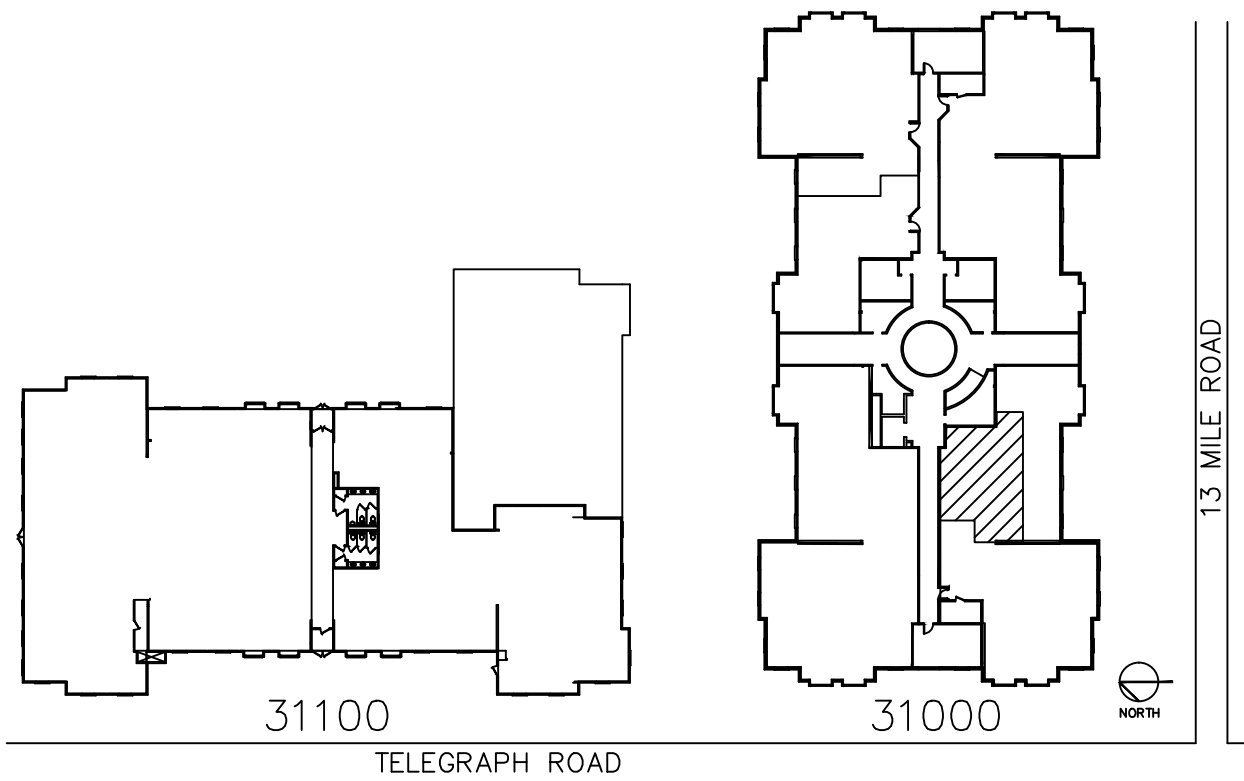


SUITE DESCRIPTION:

Medical Suite available that features:

- Nice waiting area/lobby upon entry
- Reception window
- Admin station
- 2 exam rooms
- 1 windowed, corner office
- Storage area
- Coffee room with sink & counter
- Private lavatory

Other features include individual control over HVAC; windows that open and plenty of convenient parking, just steps from building entrance.



JAMESTOWNE EXECUTIVE OFFICES

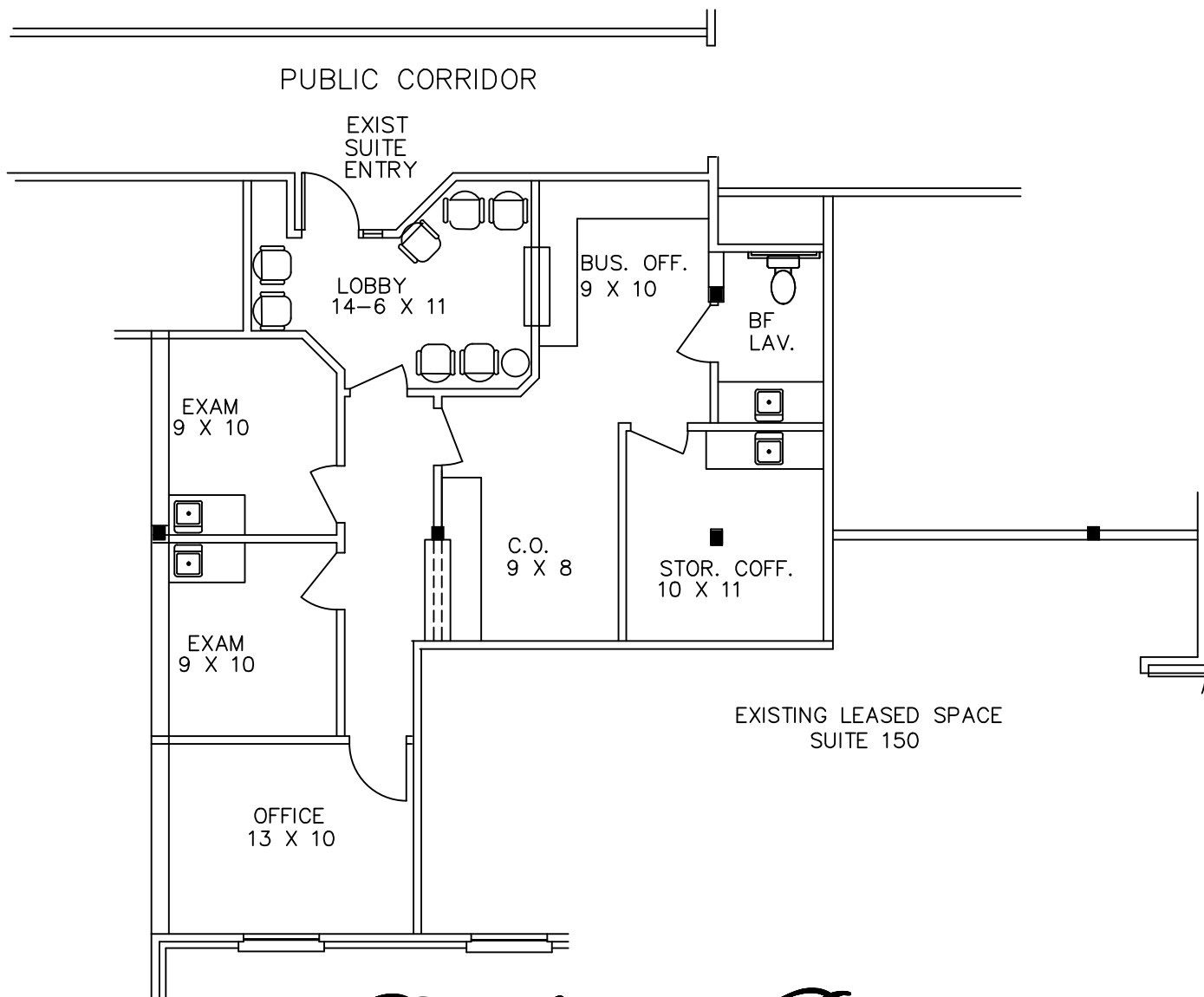
31000 TELEGRAPH ROAD, BINGHAM FARMS, MI.

AVAILABLE FOR LEASE

SUITE # 145

APPROX. 1,135 R.S.F.

1-7-2020



Beachum & Roeser

DEVELOPMENT & MANAGEMENT CORPORATION

CALL:
BILL BEACHUM
248-647-7500