

## Bingham Farms - Jamestowne 31000 Building - 980 Sq. Ft



**PROPERTY ADDRESS:**

31000 Telegraph Road  
Suite 150  
Bingham Farms, MI 48025

**SUITE SIZE:** 980 Sq. Ft.

**AVAILABLE:** Immediately

**FLOORPLAN:** See page 2

**LEASE RATE:** Negotiable

**LEASE TERM:** 5 year term

**DEMOGRAPHICS:**

***Oakland County, MI:***

Population (2015): 1,243,970  
Median household income (2015): \$67,465  
Median house value (2015): \$178,900

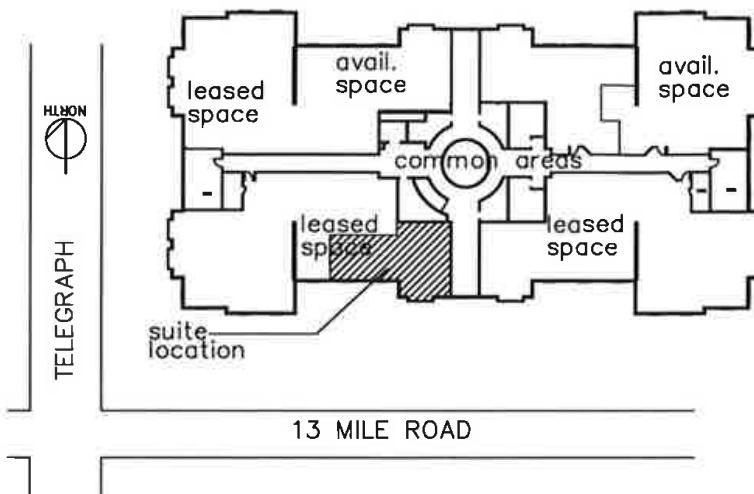
***Bingham Farms, MI:***

Population (2015): 1,133  
Median household income (2015): \$102,083  
Median house value (2015): \$361,500



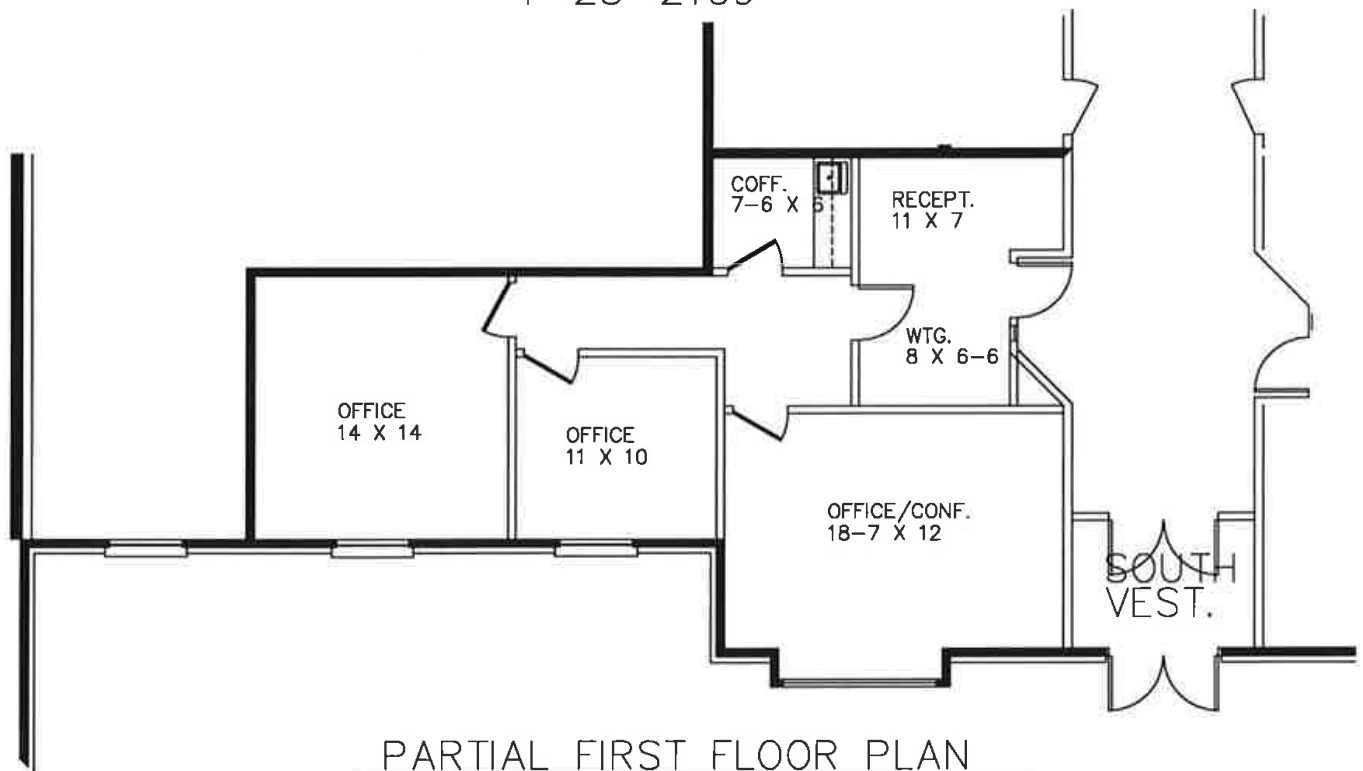
**SUITE DESCRIPTION:**

Great smaller suite immediately available in the beautiful Jamestowne Executive Office Building. Suite is newly renovated throughout and is move in ready. Suite features include: a receptionist and waiting area upon entry; two windowed offices; and large windowed conference room which can also be an office; and a coffee room with sink and countertop. Other features include windows that open; individual control over the HVAC and plenty of convenient parking just steps from building entrance.



**JAMESTOWNE EXECUTIVE OFFICES**

31000 TELEGRAPH ROAD, BINGHAM FARMS, MI.  
 PARTIAL FIRST FLOOR PLAN  
 SPEC. SUITE  
 PLAN "A"  
 SUITE 150  
 APPROX. 980 R.S.F.  
 1-25-2109



PARTIAL FIRST FLOOR PLAN

SCALE: 1/8" = 1'-0"

*Beachum & Poeser*

**DEVELOPMENT & MANAGEMENT COMPANY**

FOR INFORMATION:  
 CONTACT  
 BILL BEACHUM  
 248-647-7500