

Bingham Farms - Jamestowne 31000 Building - 900 Sq. Ft



PROPERTY ADDRESS:

31000 Telegraph Road
Suite 240
Bingham Farms, MI 48025

SUITE SIZE: 900 Sq. Ft.

AVAILABLE: Immediately

FLOORPLAN: See page 2

LEASE RATE: Negotiable

LEASE TERM: 5 year term

DEMOGRAPHICS:

Oakland County, MI:

Population (2015): 1,243,970

Median household income (2015): \$67,465

Median house value (2015): \$178,900

Bingham Farms, MI:

Population (2015): 1,133

Median household income (2015): \$102,083

Median house value (2015): \$361,500



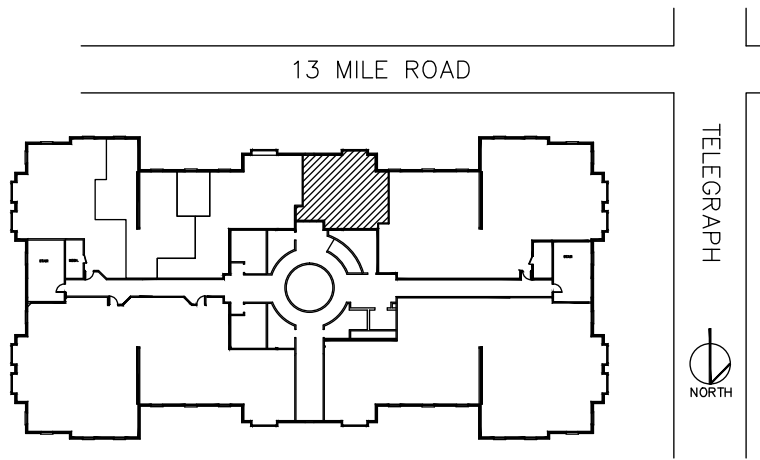
SUITE DESCRIPTION:

Perfectly located right off of the beautiful spiral staircase on the 2nd floor. This suite is perfect for a smaller sized company. The suite features:

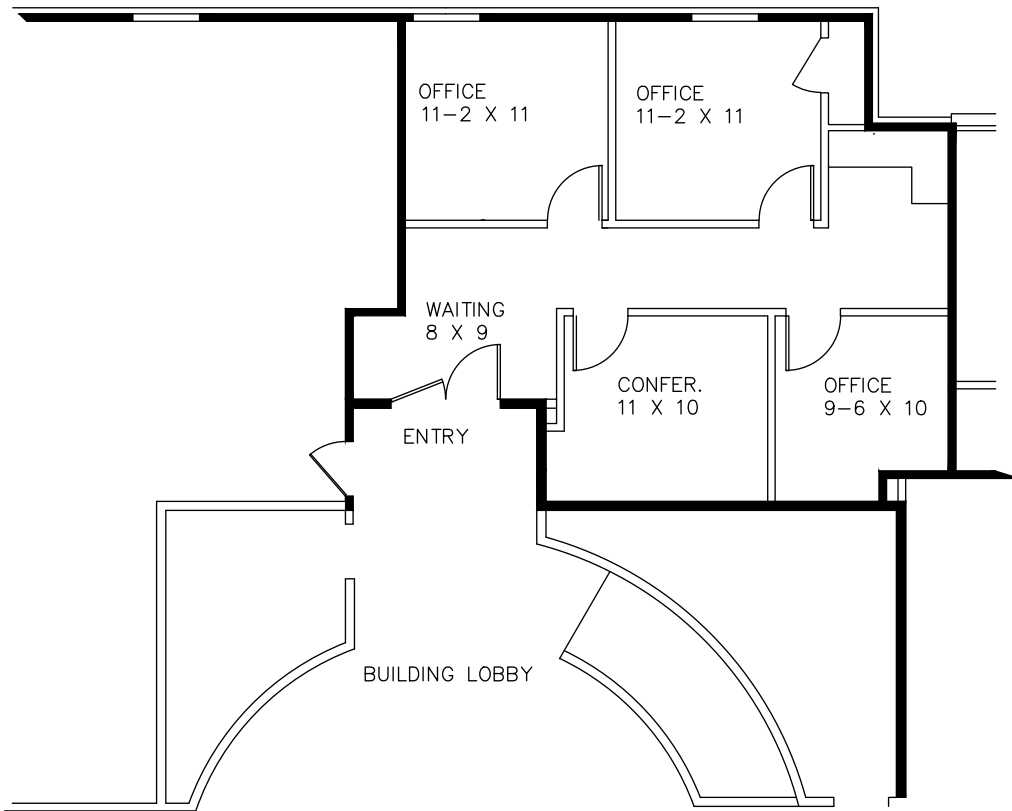
- 2 windowed offices
- 1 non-windowed office
- Conference room
- Waiting area upon entry to suite

Other features include:

- Windows that open
- Individual control over the HVAC
- Plenty of convenient parking



JAMESTOWNE EXECUTIVE OFFICES
 31000 TELEGRAPH ROAD, BINGHAM FARMS, MI.
 SUITE 240
 AVAILABLE FOR LEASE
 APPROX. 899 R.S.F.
 5-16-2019



PARTIAL SECOND FLOOR PLAN

SCALE 1/8"=1'-0"

Beachum & Roeser

MANAGEMENT & DEVELOPMENT CORPORATION

CALL:
 BILL BEACHUM
 248-647-7500