

## Bingham Farms - Jamestowne 31000 Building - 1,323 Sq. Ft



**PROPERTY ADDRESS:**

31000 Telegraph Road  
Suite 250  
Bingham Farms, MI 48025

**SUITE SIZE:** 1,323 Sq. Ft.

**AVAILABLE:** Immediately

**FLOORPLAN:** See page 2

**LEASE RATE:** Negotiable

**LEASE TERM:** Negotiable

**DEMOGRAPHICS:**

***Oakland County, MI:***

Population (2015): 1,243,970  
Median household income (2015): \$67,465  
Median house value (2015): \$178,900

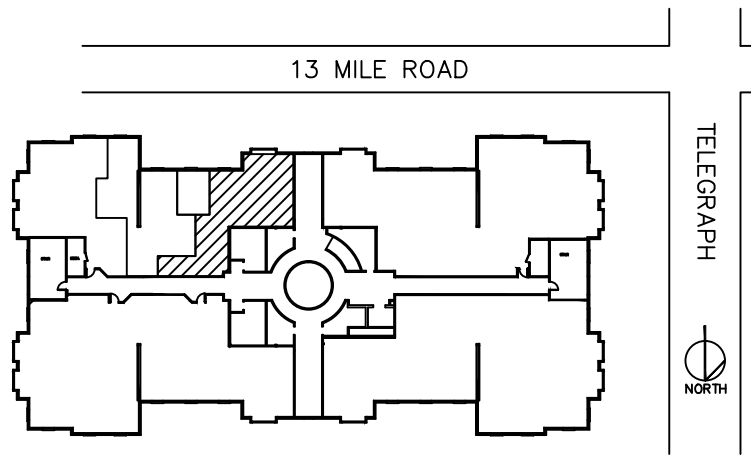
***Bingham Farms, MI:***

Population (2015): 1,133  
Median household income (2015): \$102,083  
Median house value (2015): \$361,500

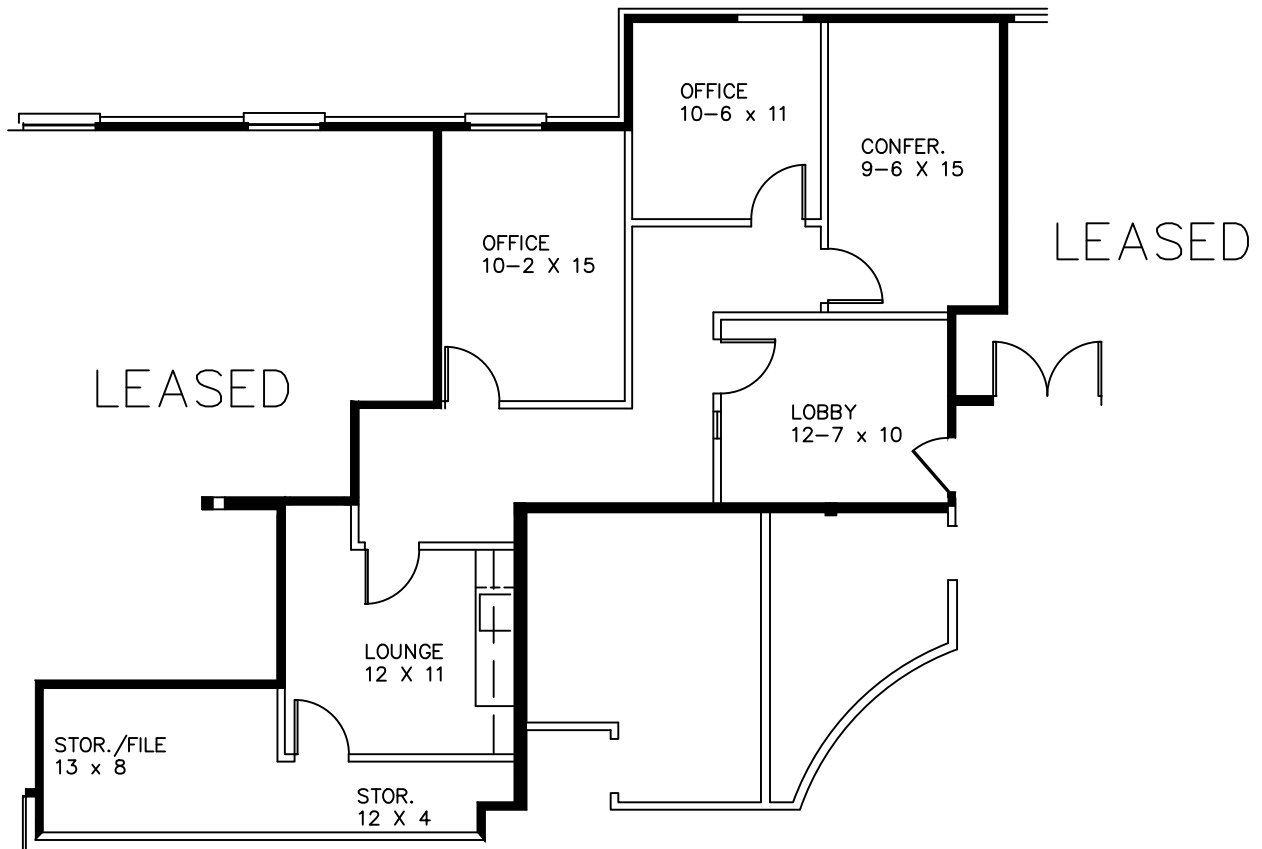


**SUITE DESCRIPTION:**

Nicely sized lobby upon entrance to suite; a conference room; two (2) windowed offices; good sized storage/file room and an employee lounge with sink and counter. Other features include: windows that open; individual control over HVAC and plenty of convenient parking just steps from building entrance.



JAMESTOWNE EXECUTIVE OFFICES  
 31000 TELEGRAPH ROAD, BINGHAM FARMS, MI.  
 AVAILABLE FOR LEASE  
 APPROX. 1,323 R.S.F.  
 SUITE 250  
 6-1-2017



*Beachum & Poeser*

MANAGEMENT & DEVELOPMENT CORPORATION

CALL:  
 BILL BEACHUM  
 248-647-7500