

Bingham Farms - Jamestowne South Building - 3,000 to 8,300 Sq. Ft



PROPERTY ADDRESS:

24255 W. Thirteen Mile Rd
Suite 200
(can be combined with suite 250 for 8,300 sqft)
Bingham Farms, MI 48025

SUITE SIZE: 5,330 Sq. Ft.

AVAILABLE: Immediately

FLOORPLAN: See page 2

LEASE RATE: Negotiable

LEASE TERM: ~~3HP~~BCMF

DEMOGRAPHICS:

Oakland County, MI:

Population (2015): 1,243,970
Median household income (2015): \$67,465
Median house value (2015): \$178,900

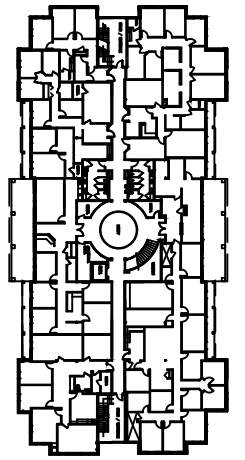
Bingham Farms, MI:

Population (2015): 1,133
Median household income (2015): \$102,083
Median house value (2015): \$361,500

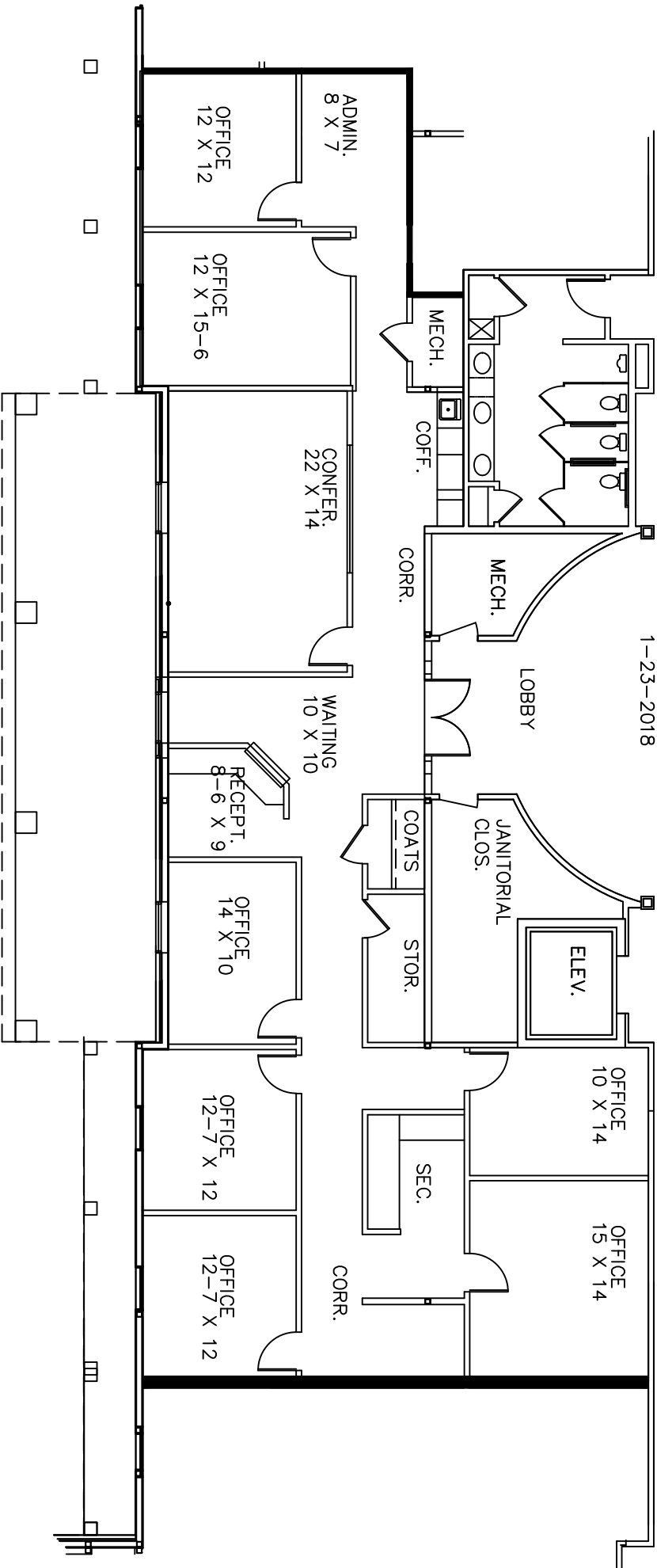


SUITE DESCRIPTION:

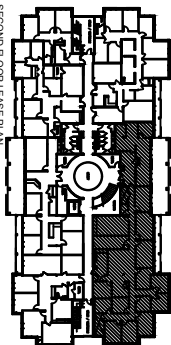
Very nice, extra-large suite available at the top of the beautiful centrally located spiral staircase in the prestigious Jamestowne South Executive Office Building. Suite features: A double door entry into the suite's lobby; nine (9) windowed offices; four (4) non-windowed offices; two (2) conference rooms; an employee lounge; a file room; and two (2) admin stations. Other features include: Windows that open; individual control over the HVAC and plenty of convenient parking, just steps from building entrance.



AVAILABLE FOR LEASE
APPROX. 3,000 RENTABLE SQ.FT.
SUITE 200
1-23-2018



13 MILE ROAD



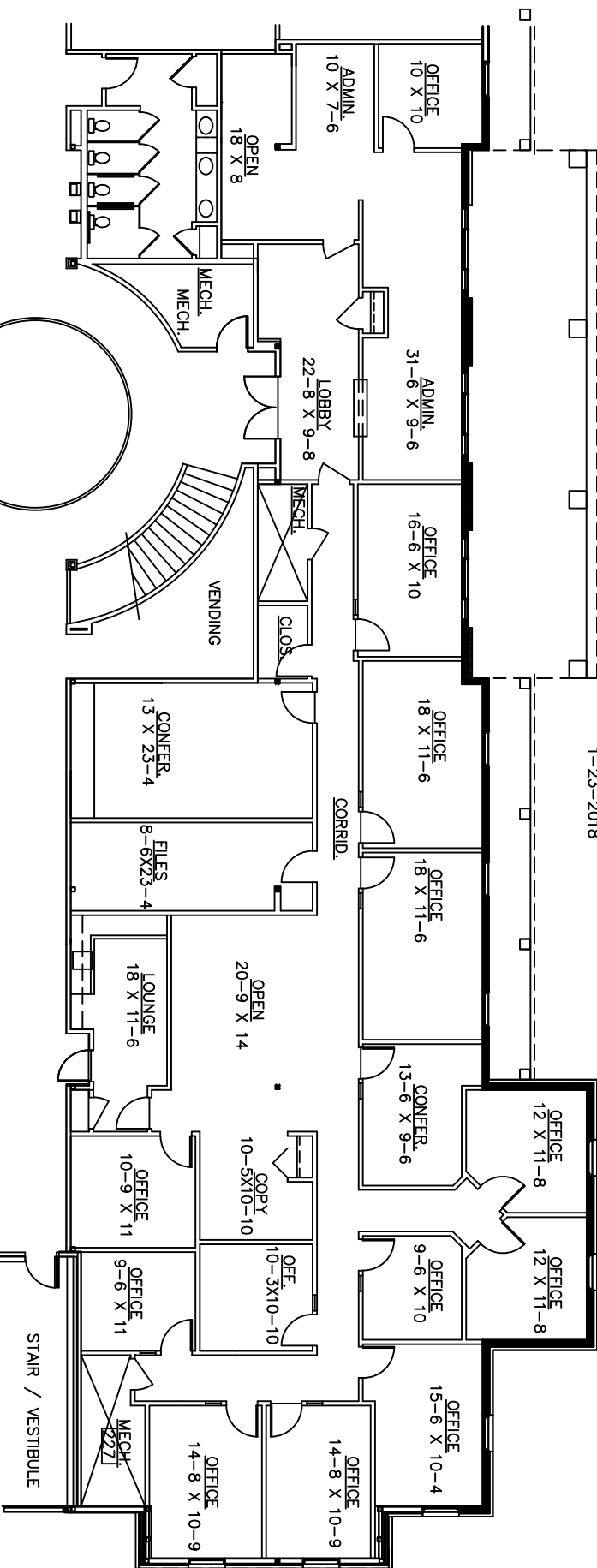
TELEGRAPH

JAMESTOWNE-SOUTH

2425 THURTEEN MI. RD.
BINGHAM FARMS, MI

AVAILABLE FOR LEASE

APPROX. 5,330 RENTABLE SQ.FT.
SUITE 250
1-23-2018



MANAGEMENT & DEVELOPMENT CORPORATION

CALL:

BILL BEACHUM

248-647-7500