

Plymouth - Pinehurst Building - 2,622 Sq. Ft



PROPERTY ADDRESS:

44670 Ann Arbor Road
Suite 130
Plymouth, MI 48170

SUITE SIZE: 2,622 Sq. Ft.

AVAILABLE: Immediately

FLOORPLAN: See page 2

LEASE RATE: Negotiable

LEASE TERM: 5 year term

DEMOGRAPHICS:

Plymouth, MI:

Population (2005): 1,214,361

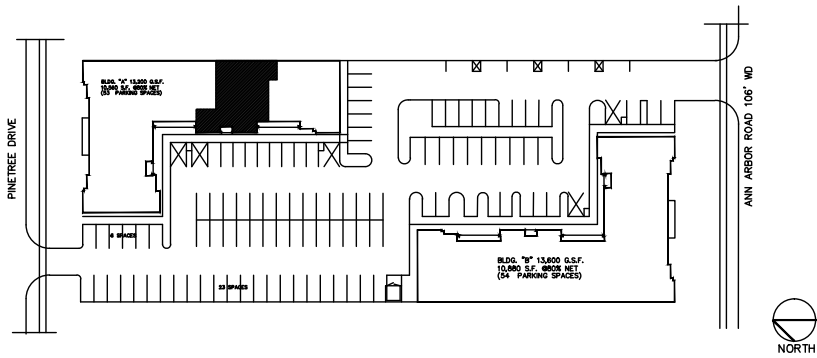
Median household income (2005): \$64,022

Median house value (2005): \$245,269



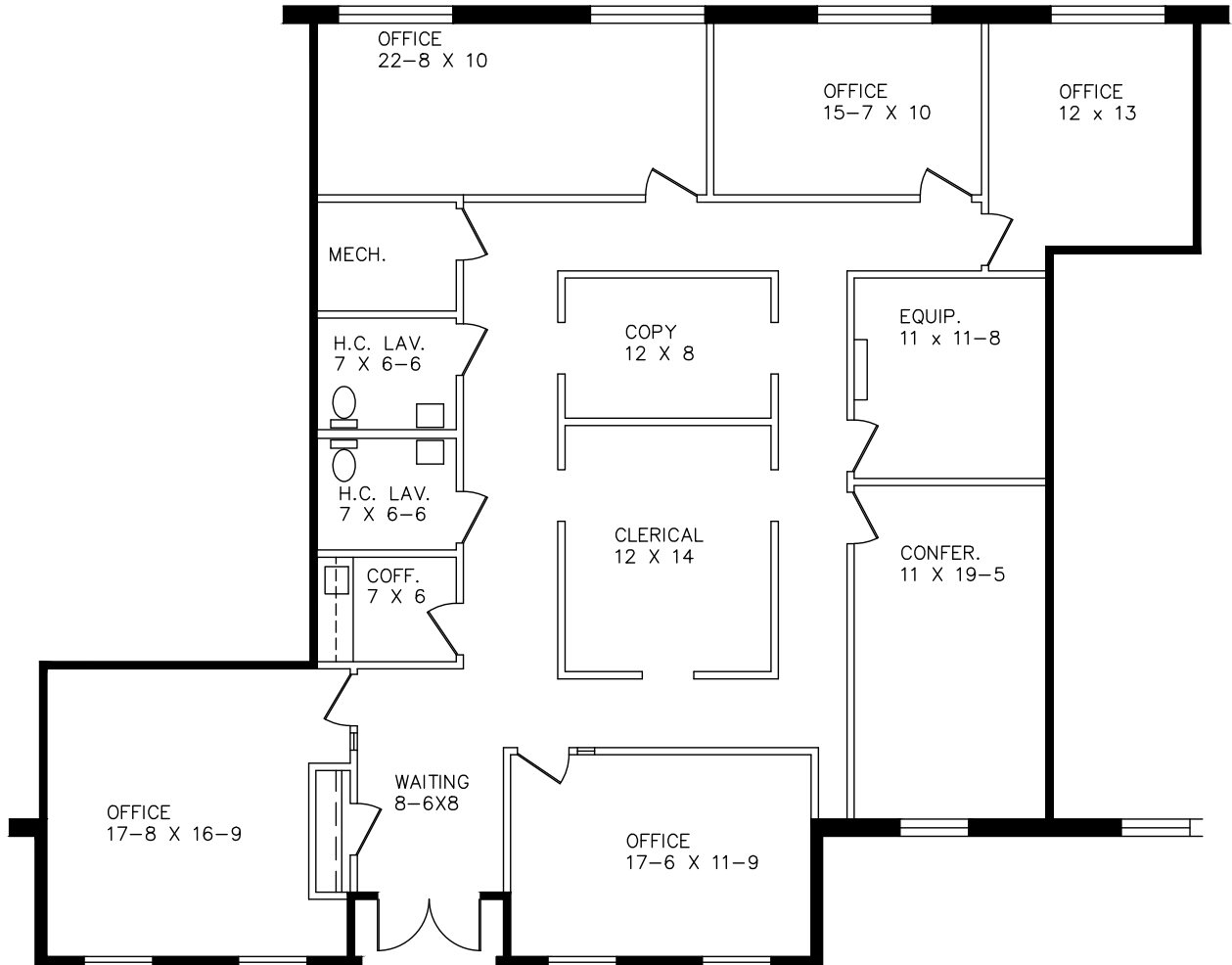
SUITE DESCRIPTION:

Very nice suite available that features: double door entrance into suite; a waiting room; 5 windowed offices; a large conference room; a small conference room; a copy room; a clerical station in center of suite; a coffee room and two private, handicapped accessible lavatories. Other features include: windows that open, individual control over HVAC and convenient parking just steps from building entrance.



PINEHURST EXECUTIVE OFFICES

44670 ANN ARBOR ROAD
 PLYMOUTH, MICHIGAN
 AVAILABLE FOR LEASE
 2,622 U. SQ. FT.
 SUITE #130
 8-16-2018



Beachum & Poeser

MANAGEMENT CORPORATION

FOR INFORMATION
 CONTACT
 BILL BEACHUM
 248-647-7500