

PINEHURST EXECUTIVE OFFICES

44670 ANN ARBOR ROAD
PLYMOUTH, MICHIGAN

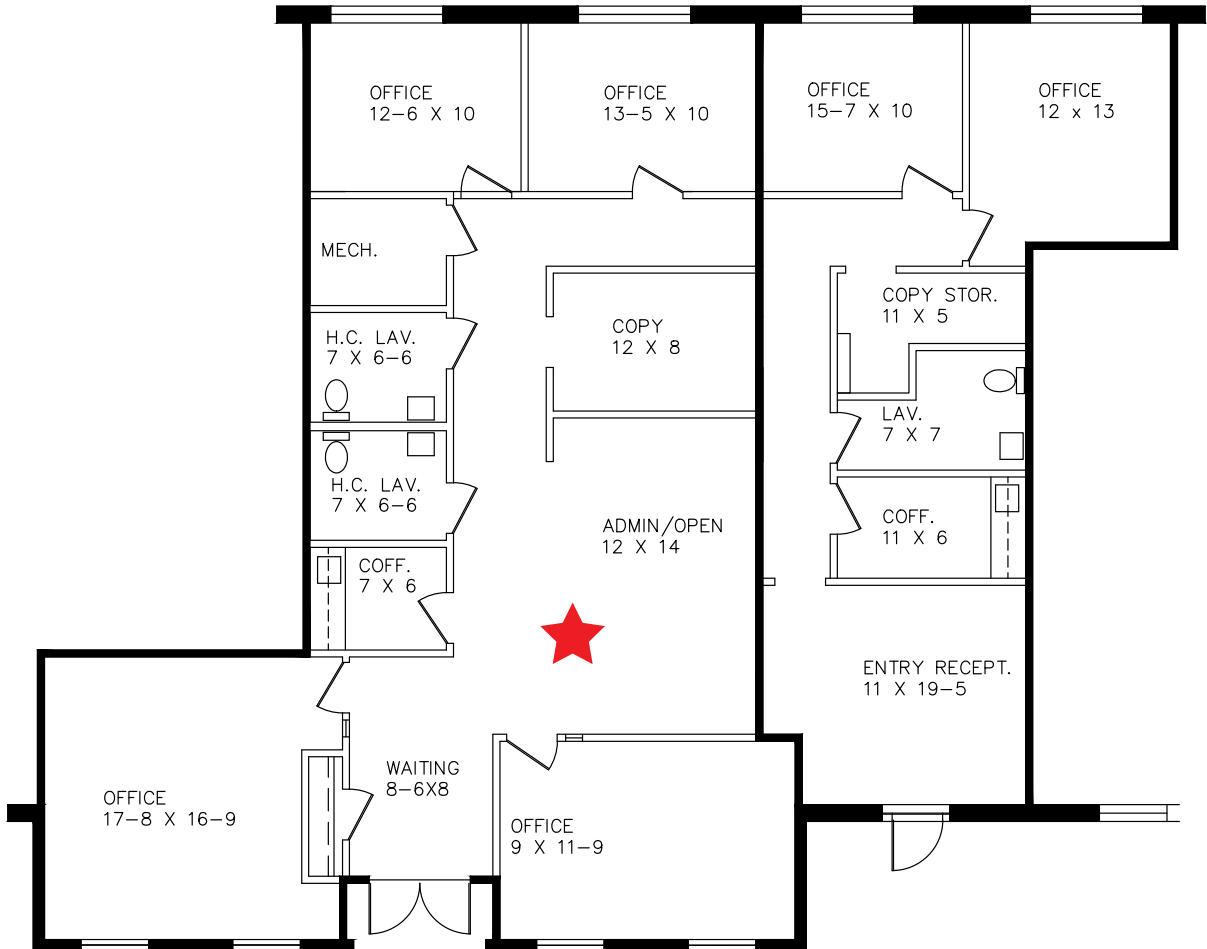
PROPOSED SPLIT
PROPOSED SPACE PLAN "A"

1,755 U. SQ. FT.

867 U. SQ. FT.

Suite 130A

SUITE #130
7-26-2019



Beachum & Poeser

MANAGEMENT CORPORATION

FOR INFORMATION
CONTACT
BILL BEACHUM
248-647-7500