

Plymouth - Pinehurst Building - 867 Sq. Ft



PROPERTY ADDRESS:

44670 Ann Arbor Road
Suite 130B
Plymouth, MI 48170

SUITE SIZE: 867 Sq. Ft.

AVAILABLE: Immediately

FLOORPLAN: See page 2

LEASE RATE: Negotiable

LEASE TERM: 5 year term

DEMOGRAPHICS:

Plymouth, MI:

Population (2005): 1,214,361

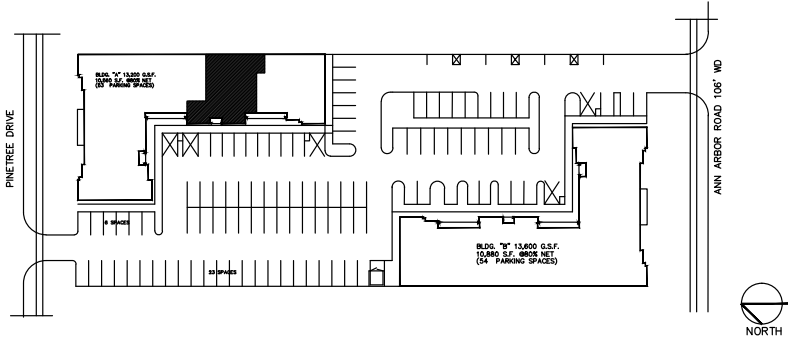
Median household income (2005): \$64,022

Median house value (2005): \$245,269



SUITE DESCRIPTION:

Perfect 2 to 3 person office suite available that features: nice reception upon entry; 2 windowed offices; a coffee room with sink and counter; a copy/file/storage room; and a private lavatory.



PINEHURST EXECUTIVE OFFICES

44670 ANN ARBOR ROAD
PLYMOUTH, MICHIGAN

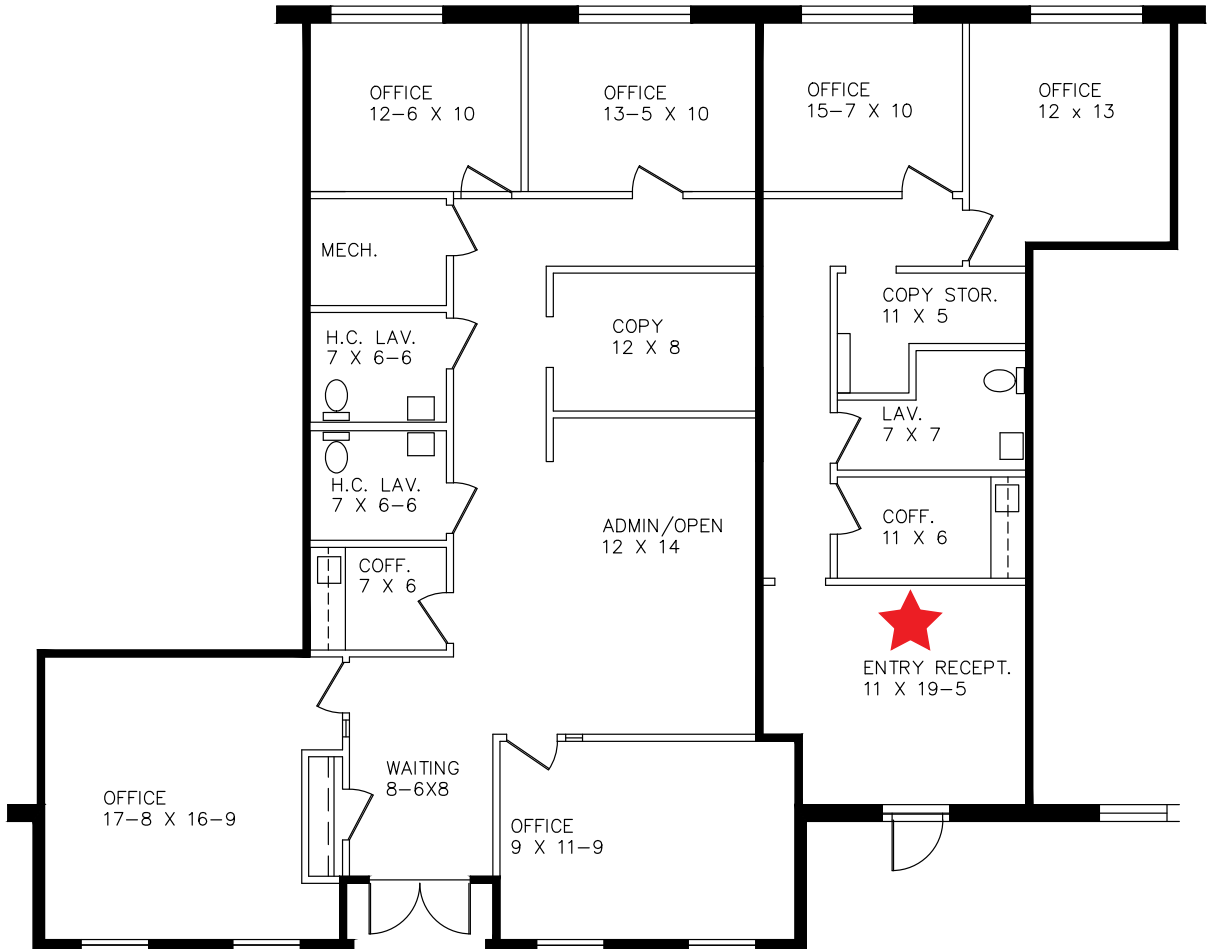
PROPOSED SPLIT
PROPOSED SPACE PLAN "A"

1,755 U. SQ. FT.

867 U. SQ. FT.

SUITE #130
7-26-2019

Suite 130B



Beachum & Roeser

MANAGEMENT CORPORATION

FOR INFORMATION
CONTACT
BILL BEACHUM
248-647-7500