

PINEHURST EXECUTIVE OFFICES

44670 ANN ARBOR ROAD
PLYMOUTH, MICHIGAN

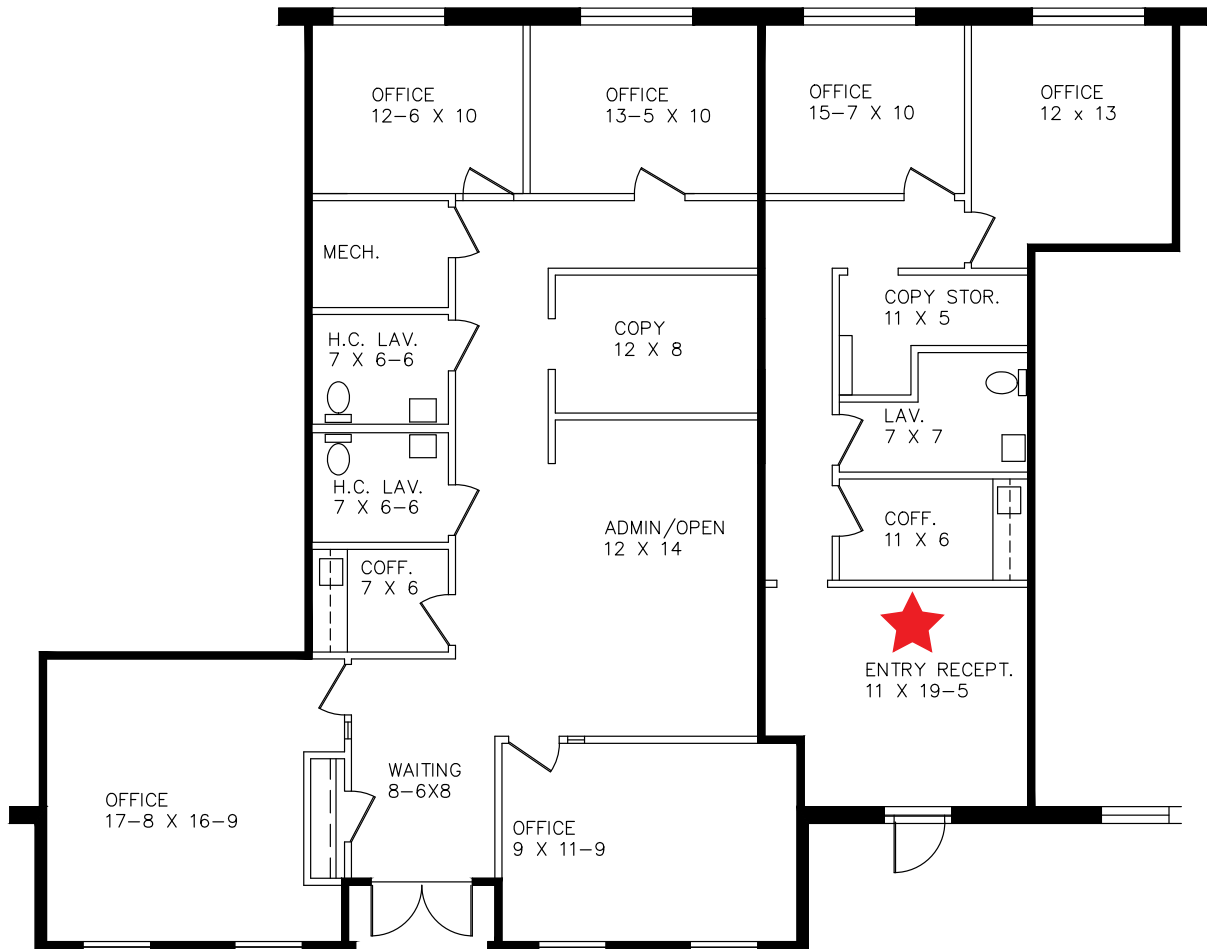
PROPOSED SPLIT
PROPOSED SPACE PLAN "A"

1,755 U. SQ. FT.

867 U. SQ. FT.

SUITE #130
7-26-2019

Suite 130B



Beachum & Roeser

MANAGEMENT CORPORATION

FOR INFORMATION
CONTACT
BILL BEACHUM
248-647-7500