

## Plymouth - Pinehurst Building - 2,300 Sq. Ft



**PROPERTY ADDRESS:**

44670 Ann Arbor Road  
Suite 140  
Plymouth, MI 48170

**SUITE SIZE:** 2,300 Sq. Ft.

**AVAILABLE:** Immediately

**FLOORPLAN:** See page 2

**LEASE RATE:** Negotiable

**LEASE TERM:** Negotiable

**DEMOGRAPHICS:**

***Plymouth, MI:***

Population (2005): 1,214,361

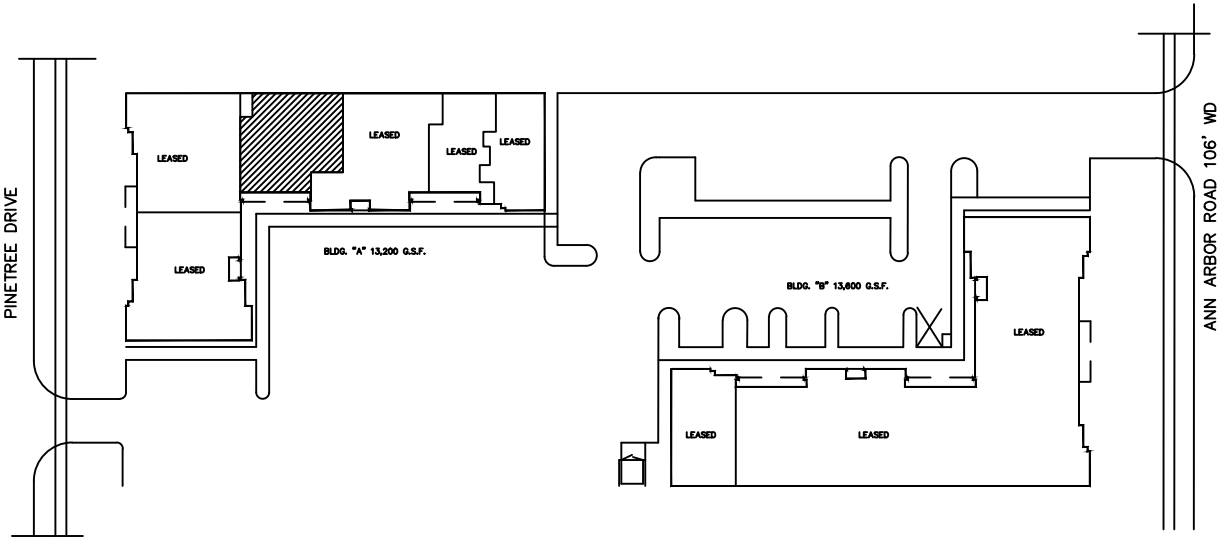
Median household income (2005): \$64,022

Median house value (2005): \$245,269



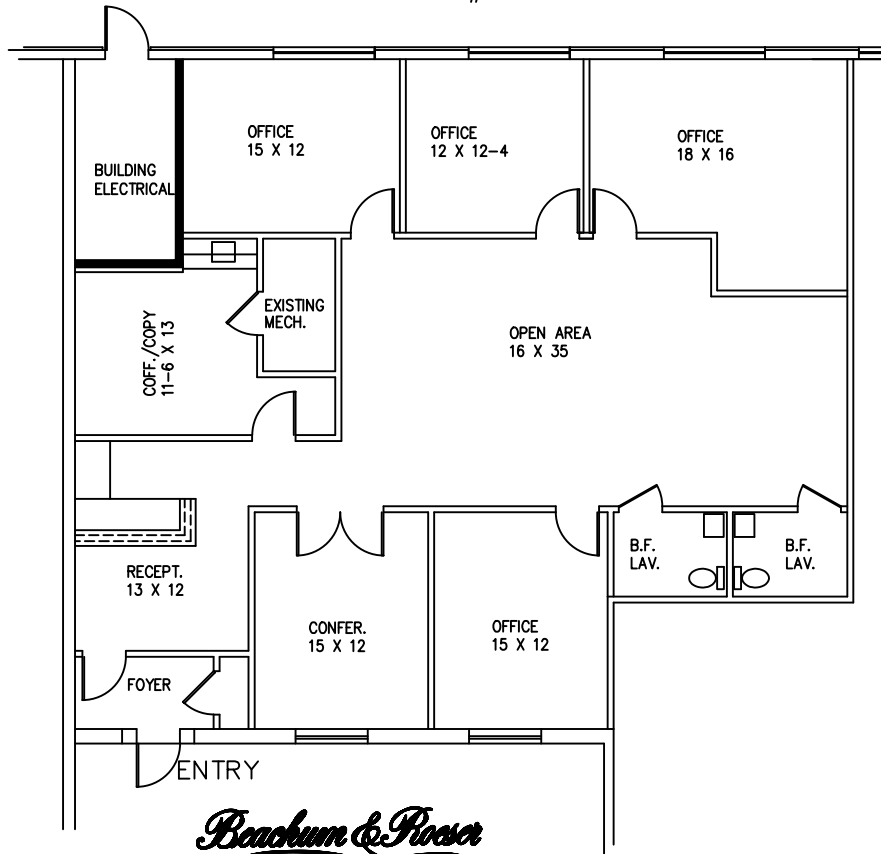
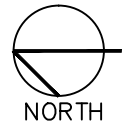
**SUITE DESCRIPTION:**

Nice suite available with a foyer entrance into an attractive reception area; a windowed conference room; four(4) windowed offices; copy room, which can double as another conference room; a large open area in the middle of the suite and two private lavatories. Other features include: windows that open; individual control over HVAC and plenty of parking, just steps from building entrance.



## PINEHURST EXECUTIVE OFFICES

44670 ANN ARBOR ROAD  
 PLYMOUTH, MICHIGAN  
 AVAILABLE FOR LEASE  
 APPROX. 2,318 U.S.F.  
 SUITE #140



*Beachum & Poeser*

MANAGEMENT AND DEVELOPMENT COMPANY

CALL:  
 BILL BEACHUM  
 248-647-7500