

Southfield - Quadrangle Building - 2,500 to 10,364 Sq. Ft



PROPERTY ADDRESS:

29800 Telegraph Road
Southfield, MI 48034

SUITE SIZE: Up to 10,364 Sq. Ft. - will divide
- minimum size 2,500 sq. ft.

AVAILABLE: Immediately

FLOORPLAN: See page 2

LEASE RATE: Negotiable

LEASE TERM: Negotiable

DEMOGRAPHICS:

Oakland County, MI:

Population (2015): 1,243,970

Median household income (2015): \$67,465

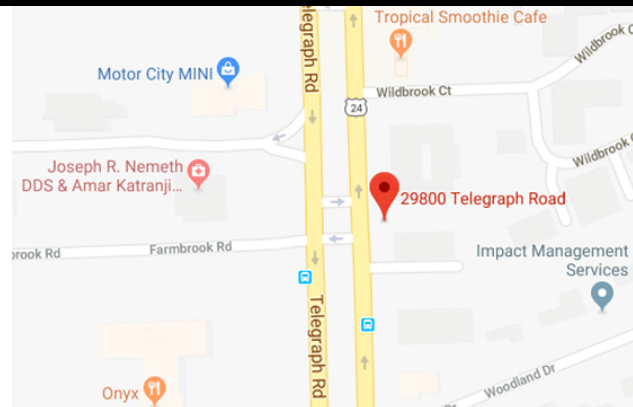
Median house value (2015): \$178,900

Southfield, MI:

Population (2015): 73,156

Median household income (2015): \$49,244

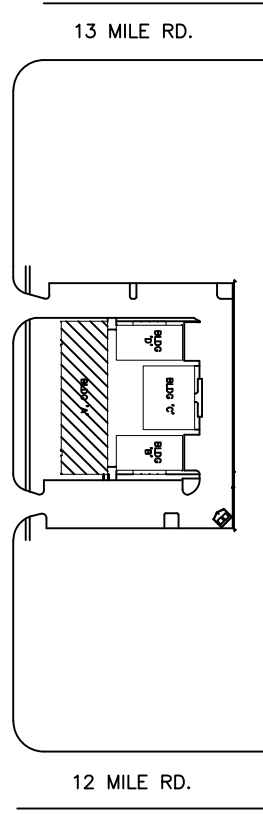
Median house value (2015): \$105,800



SUITE DESCRIPTION:

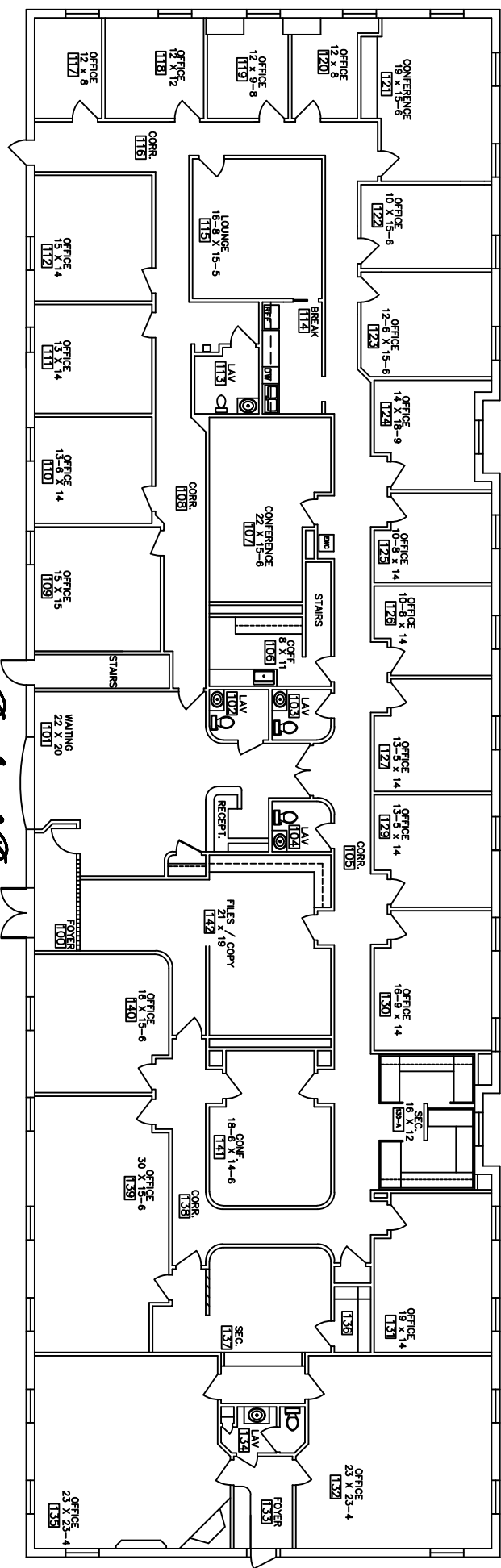
- Building signage available
- Two separate, foyer entrances
- 21 windowed offices (2 corner offices)
- 4 private lavatories
- Reception area
- 1 corner/windowed conference room
- 2 interior conference rooms
- 2 admin stations
- Lounge and break room
- Coffee room
- File/copy room

Other features include: windows that open, individual control over HVAC and convenient parking, just steps from suite entrance.



QUADRANGLE

29800 TELEGRAPH ROAD
 SOUTHFIELD, MICHIGAN
 AVAILABLE FOR LEASE
 APPROX. 10,364 R.S.F.
 6-13-2017



DEVELOPMENT & MANAGEMENT CORPORATION

CONTACT:
 BILL BEACHUM
 248-647-7500