

## Auburn Hills, MI - University Village - 2,540 SQFT



**PROPERTY ADDRESS:**

3121 University Drive  
Suite 140  
Auburn Hills, MI 48326

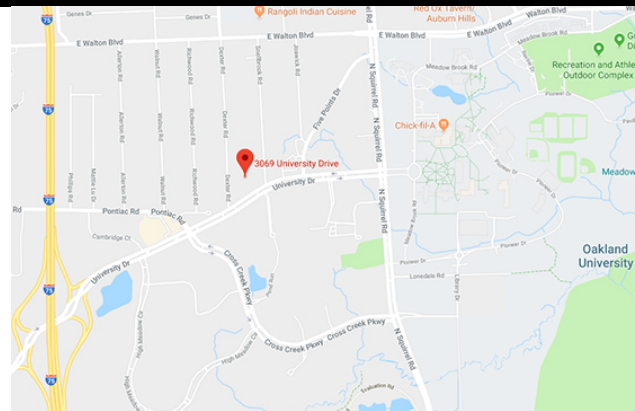
**SUITE SIZE:** 2,540 Sq. Ft.  
**AVAILABLE:** Immediately  
**FLOORPLAN:** See page 2  
**LEASE RATE:** Negotiable  
**LEASE TERM:** Negotiable  
**DEMOGRAPHICS:**

***Oakland County, MI:***

Population (2015): 1,243,970  
Median household income (2015): \$67,465  
Median house value (2015): \$178,900

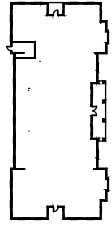
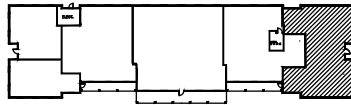
***Auburn Hills, MI:***

Population (2014): 21,845  
Median household income (2016): \$55,277  
Median house value (2016): \$141,788



**SUITE DESCRIPTION:**

Suite features 5 windowed offices – 1 of which is a large corner office, reception upon entry, 2 conference rooms, a nicely sized open work room, an admin area, a kitchen with sink and countertop, and 2 private in-suite lavatories. Other features include windows that open, individual control over HVAC and plenty of convenient parking, just steps from building entrance.

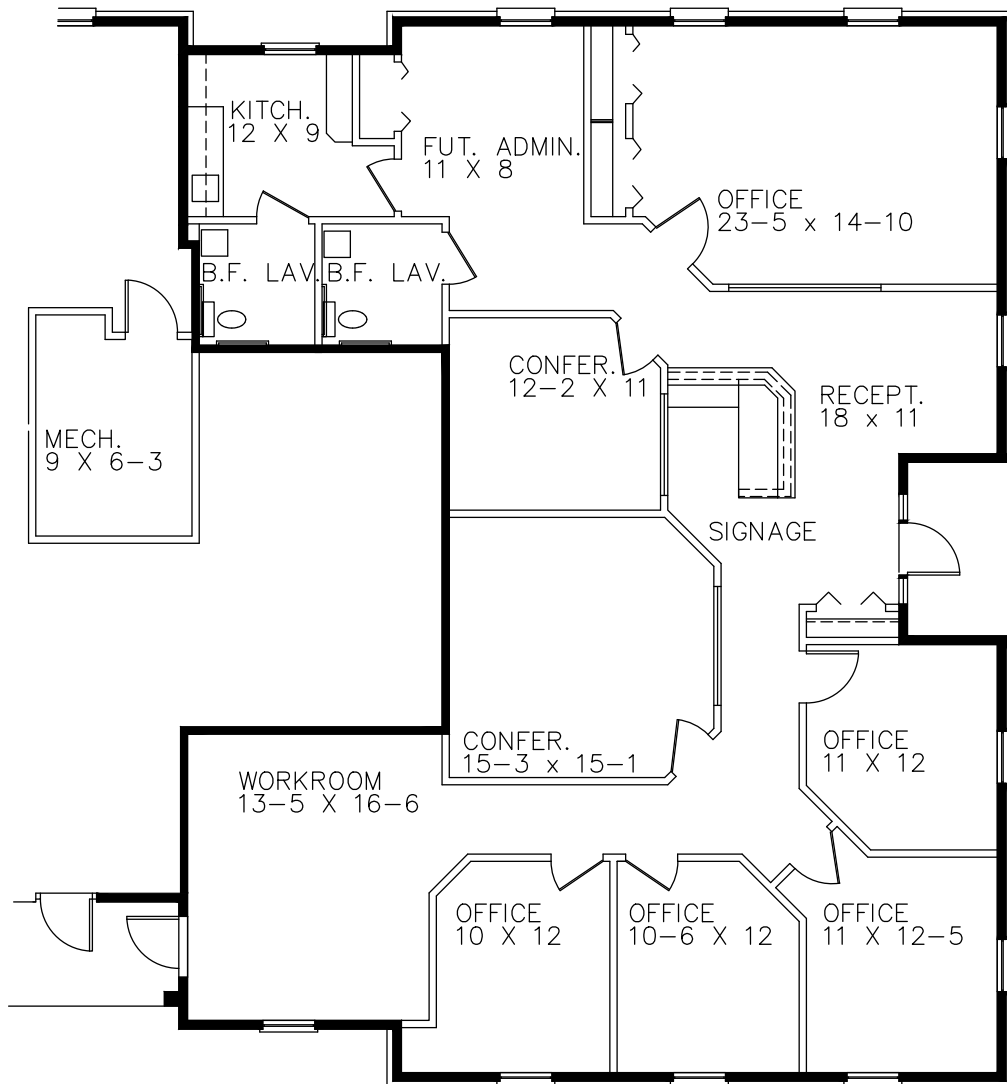


# UNIVERSITY VILLAGE

3121 UNIVERSITY DRIVE  
SUITE #140

AVAILABLE FOR LEASE  
APPROX. 2,540 SQ.FT.  
10-24-2019

UNIVERSITY DRIVE



*Beachum & Poeser*

MANAGEMENT CORPORATION

CALL:

BILL BEACHUM  
248-647-7500  
( PLAN NOT TO SCALE )