

Ann Arbor - Williamsburg VII Building - 2,045 Sq. Ft



PROPERTY ADDRESS:

1601 Briarwood Circle
Suite 400
Ann Arbor, MI 48108

SUITE SIZE: 2,045 Sq. Ft.
AVAILABLE: Immediately
FLOORPLAN: See page 2
LEASE RATE: Negotiable
LEASE TERM: Negotiable
DEMOGRAPHICS: :

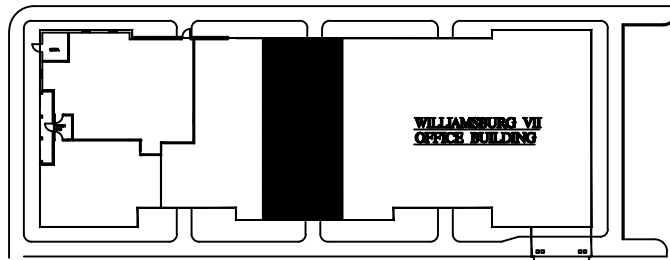
Ann Arbor, MI:

Population (2015): 117,070
Median household income (2015): \$55,990
Median house value (2015): \$240,700



SUITE DESCRIPTION:

2 window offices, 7 interior offices; a large conference room; a copy/storage room; and a private unisex lavatory. Other features include: Ample parking, just steps from suite entry; windows that open to allow fresh air; individual control over HVAC; beautiful landscaping; and just 5 minutes away from the University of Michigan.

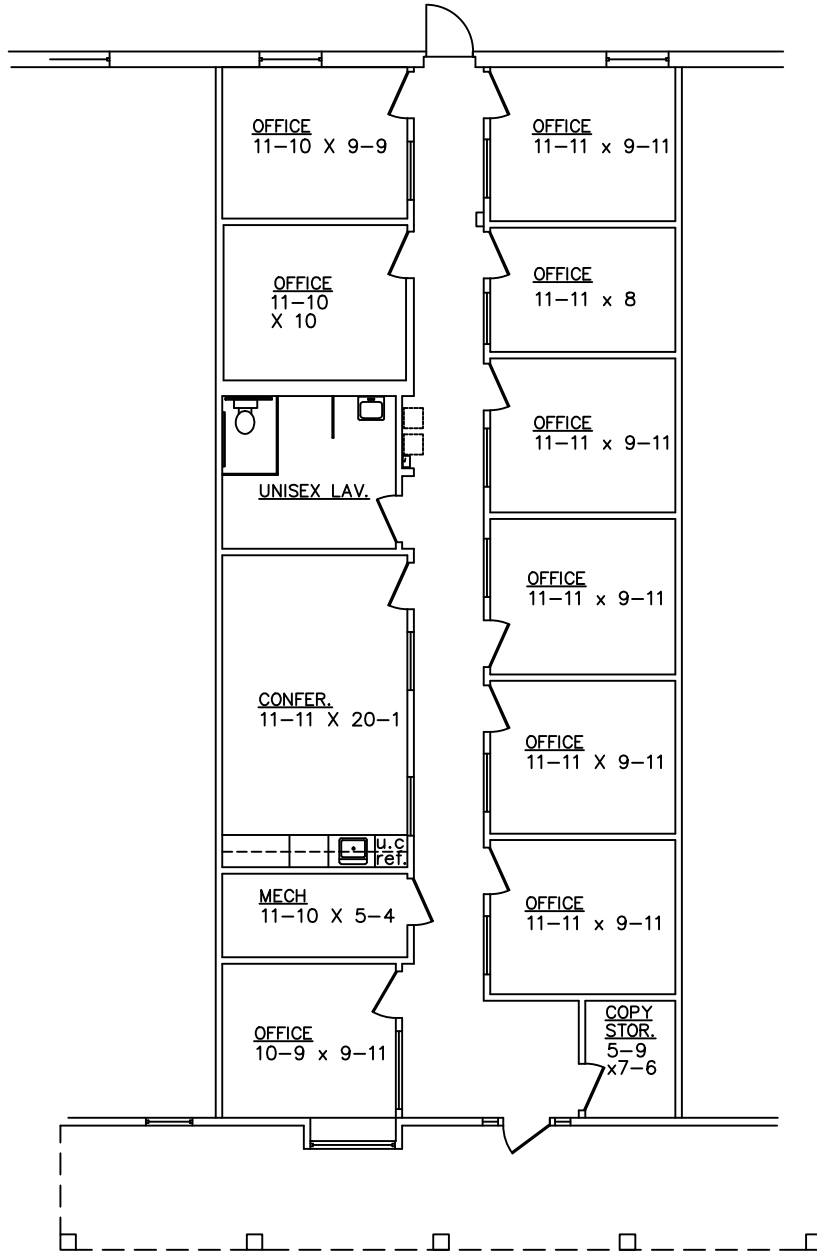


BRIARWOOD CIRCLE DRIVE
WILLIAMSBURG VII
 1601 BRIARWOOD CIRCLE - ANN ARBOR, MI.



WILLIAMSBURG VII

1601 BRIARWOOD CIRCLE - ANN ARBOR, MI.
 AVAILABLE FOR LEASE- 2,045 SQ.FT.
 APPROX. 2,045 SQ.FT.
 SUITE # 400



DEVELOPMENT & MANAGEMENT CORPORATION

CALL:
 BILL BEACHUM
 248-647-7500