

## Ann Arbor - Williamsburg VII Building - 2,786 Sq. Ft



### PROPERTY ADDRESS:

1601 Briarwood Circle  
Suite 475  
Ann Arbor, MI 48108

**SUITE SIZE:** 2,786 Sq. Ft.

**AVAILABLE:** Immediately

**FLOORPLAN:** See page 2

**LEASE RATE:** Negotiable

**LEASE TERM:** Negotiable

### DEMOGRAPHICS:

#### *Ann Arbor, MI:*

Population (2015): 117,070

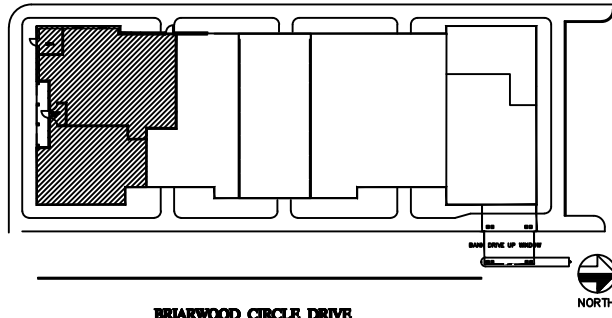
Median household income (2015): \$55,990

Median house value (2015): \$240,700



### SUITE DESCRIPTION:

Large suite available that features: a foyer entrance into waiting area; 4 windowed offices; 3 non-windowed offices; a server room; a conference room; billing area; a kitchen/copy room with countertop and sink; and private lavatories. Other features include: windows that open to allow fresh air in; beautiful landscaping; convenient parking just steps from entrance and individual control over the HVAC.



**BRIARWOOD CIRCLE DRIVE**

**WILLIAMSBURG VII**

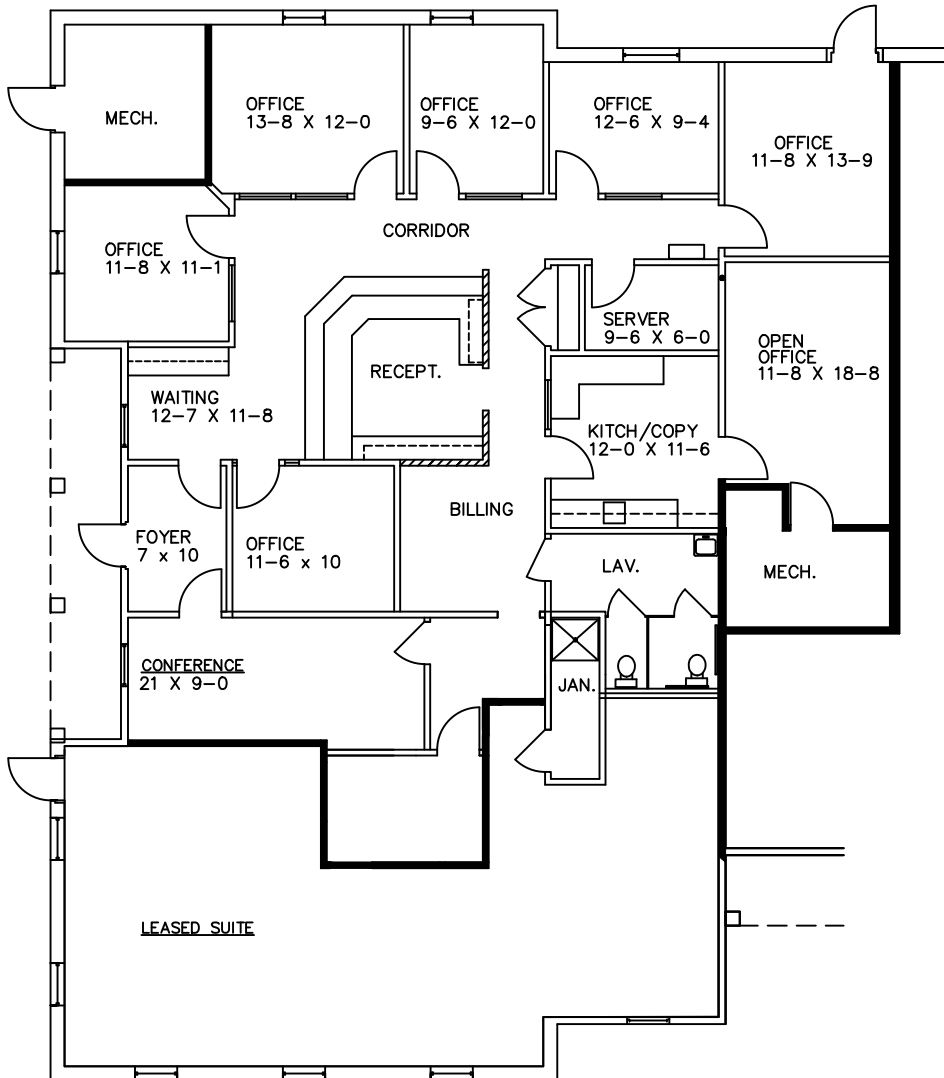
1601 BRIARWOOD CIRCLE - ANN ARBOR, MI.

AVAILABLE FOR LEASE

APPROX. 2,786 R.S.F.

SUITE 475

4-21-17



**PARTIAL FIRST FLOOR PLAN**

1/8"=1'-0"

*Beachum & Poeser*

**DEVELOPMENT & MANAGEMENT CORPORATION**

CALL:

BILL BEACHUM  
248-647-7500