

BRIARWOOD CIRCLE DRIVE



WILLIAMSBURG VII

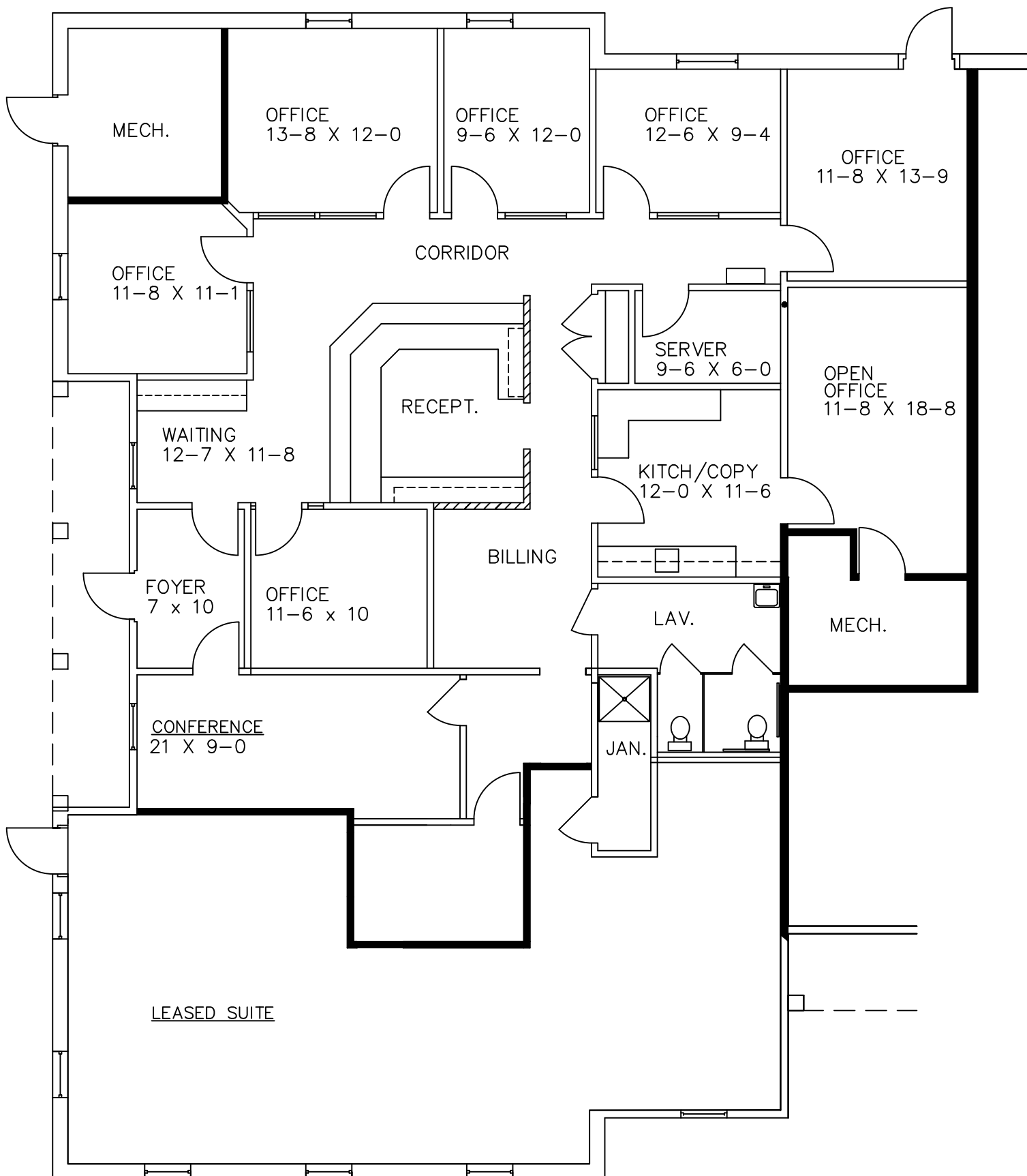
1601 BRIARWOOD CIRCLE - ANN ARBOR, MI.

AVAILABLE FOR LEASE

APPROX. 2,786 R.S.F.

SUITE 475

4-21-17



PARTIAL FIRST FLOOR PLAN

1/8"=1'-0"



DEVELOPMENT & MANAGEMENT CORPORATION

CALL:

BILL BEACHUM
248-647-7500