

West Bloomfield - Yorktowne Building - 1,788 Sq. Ft



PROPERTY ADDRESS:

5777 W. Maple Rd.
Suite 170
West Bloomfield, MI 48322

SUITE SIZE: 1,788 Sq. Ft.
AVAILABLE: Immediately
FLOORPLAN: See page 2
LEASE RATE: Negotiable
LEASE TERM: Negotiable
DEMOGRAPHICS:

Oakland County, MI:

Population (2015): 1,243,970
Median household income (2015): \$67,465
Median house value (2015): \$178,900

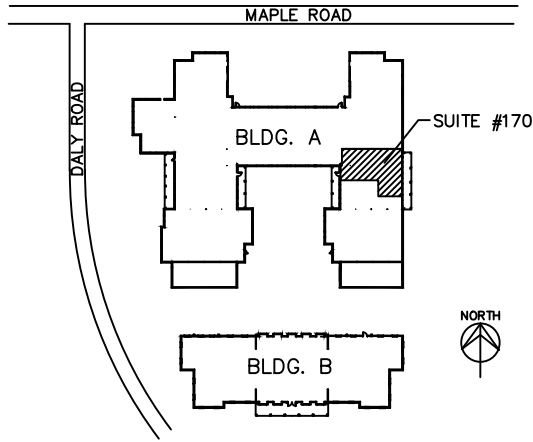
West Bloomfield, MI:

Population (2015): 65,885
Median household income (2015): \$91,028
Median house value (2015): \$251,400



SUITE DESCRIPTION:

Nice medical or office suite available, featuring: large waiting room upon entry; large reception area centrally located for all exam rooms and offices; one (1) windowed office; one (1) non-windowed office; three (3) exam rooms; an employee lounge; a coffee room with sink and counter and two private lavatories. Other features include: windows that open and individual control over HVAC.



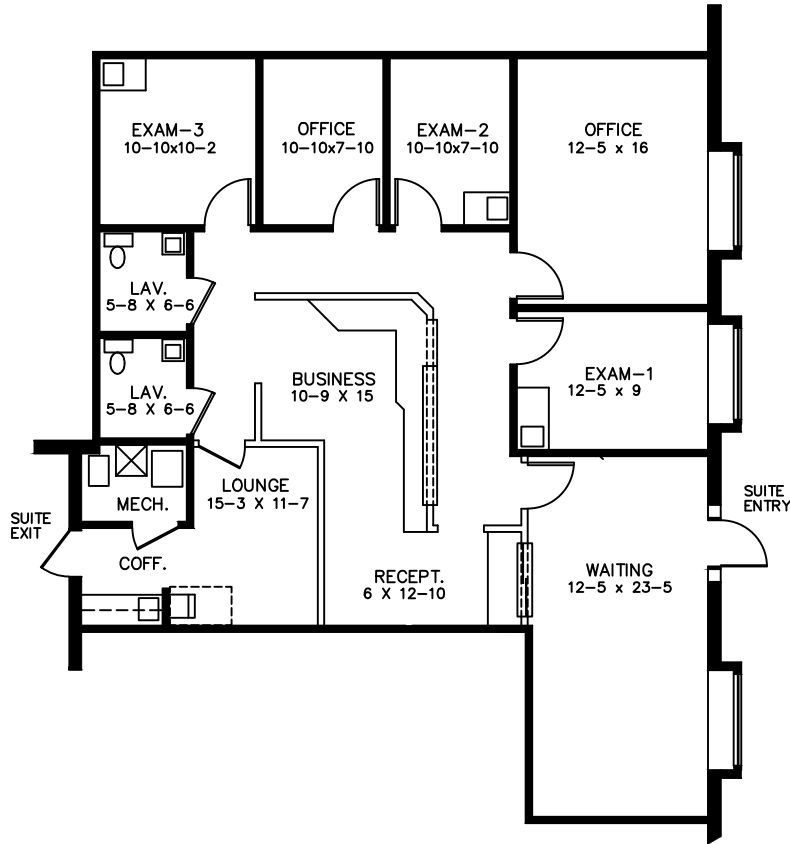
YORKTOWNE EXECUTIVE OFFICES

5777 MAPLE – WEST BLOOMFIELD

AVAILABLE FOR LEASE

APPROX. 1,788 R.S.F.

SUITE 170



Beachum & Roeser

DEVELOPMENT & MANAGEMENT CORPORATION

CALL:

BILL BEACHUM

248-647-7500