

West Bloomfield - Yorktowne Building - 2,950 Sq. Ft



PROPERTY ADDRESS:

5777 W. Maple Rd.
Suite 180
West Bloomfield, MI 48322

SUITE SIZE: 2,950 Sq. Ft.

AVAILABLE: 1/1/2020

FLOORPLAN: See page 2

LEASE RATE: Negotiable

LEASE TERM: 5 year term

DEMOGRAPHICS:

Oakland County, MI:

Population (2015): 1,243,970
Median household income (2015): \$67,465
Median house value (2015): \$178,900

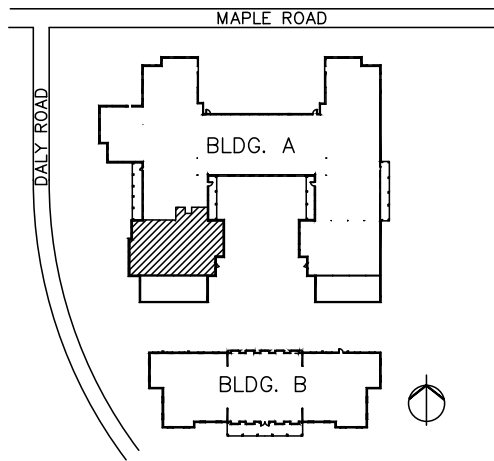
West Bloomfield, MI:

Population (2015): 65,885
Median household income (2015): \$91,028
Median house value (2015): \$251,400



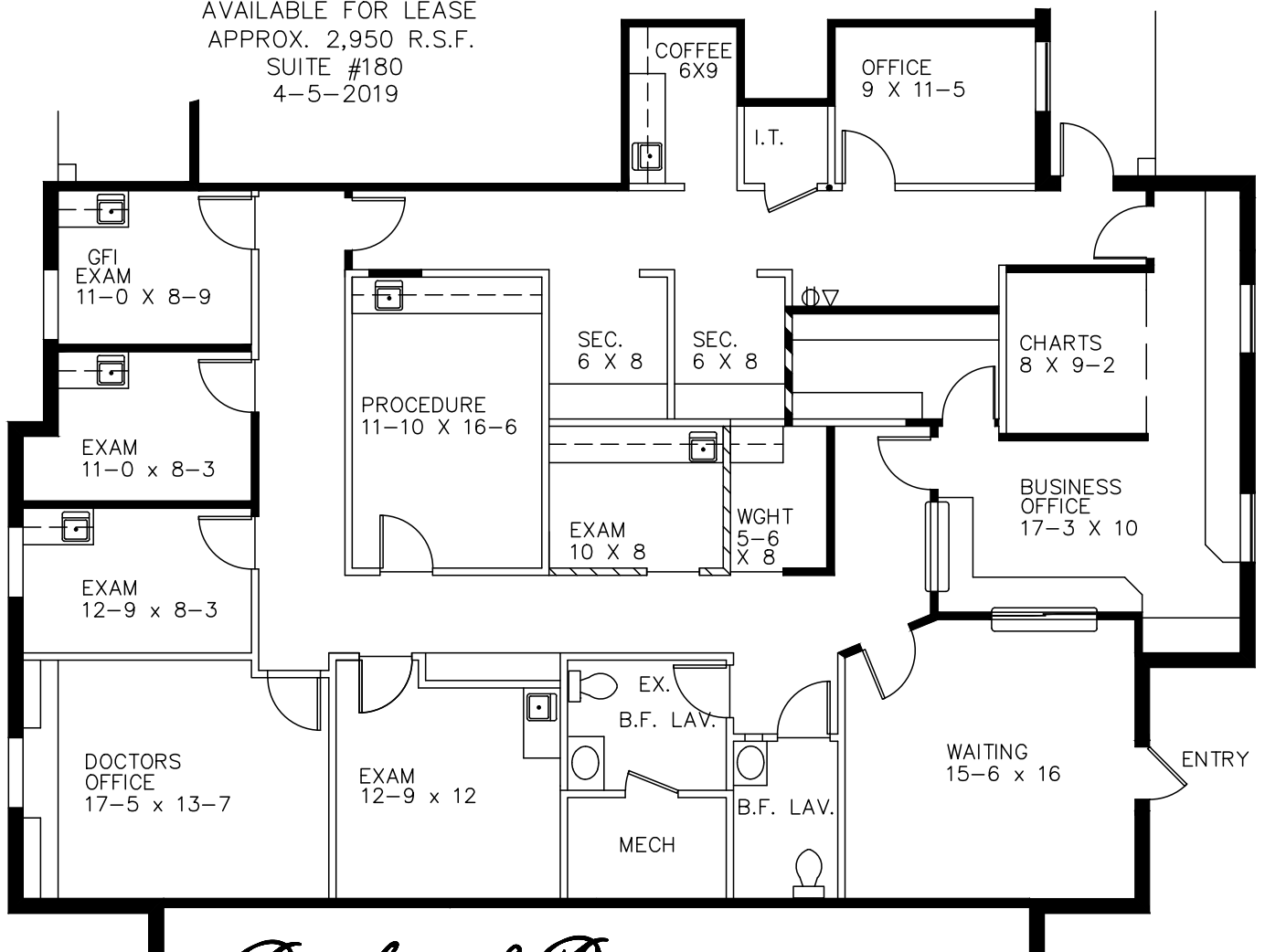
SUITE DESCRIPTION:

Medical/General office suite available January 1, 2020. Suite is currently set up as medical but could be reverted back to general office. Suite features: A large waiting room, upon entry; 5 exam rooms; 2 large corner offices that are windowed; 1 small windowed office; 2 private lavatories; a coffee room with a sink and countertop; 2 sectional/cubicles; and a large procedure room. Other features include: individual control over HVAC; windows that open and convenient parking just steps from building entrance.



YORKTOWNE EXECUTIVE OFFICES

5777 MAPLE — WEST BLOOMFIELD
 AVAILABLE FOR LEASE
 APPROX. 2,950 R.S.F.
 SUITE #180
 4-5-2019



Beachum & Roeser

MANAGEMENT CORPORATION

CALL:
 BILL BEACHUM
 248-647-7500
 (PLAN NOT TO SCALE)