

## West Bloomfield - Yorktowne Building - 1,775 Sq. Ft



### PROPERTY ADDRESS:

5777 W. Maple Rd.  
Suite 190  
West Bloomfield, MI 48322

**SUITE SIZE:** 1,775 Sq. Ft.  
**AVAILABLE:** Immediately  
**FLOORPLAN:** See page 2  
**LEASE RATE:** Negotiable  
**LEASE TERM:** Negotiable  
**DEMOGRAPHICS:**

#### *Oakland County, MI:*

Population (2015): 1,243,970  
Median household income (2015): \$67,465  
Median house value (2015): \$178,900

#### *West Bloomfield, MI:*

Population (2015): 65,885  
Median household income (2015): \$91,028  
Median house value (2015): \$251,400



### SUITE DESCRIPTION:

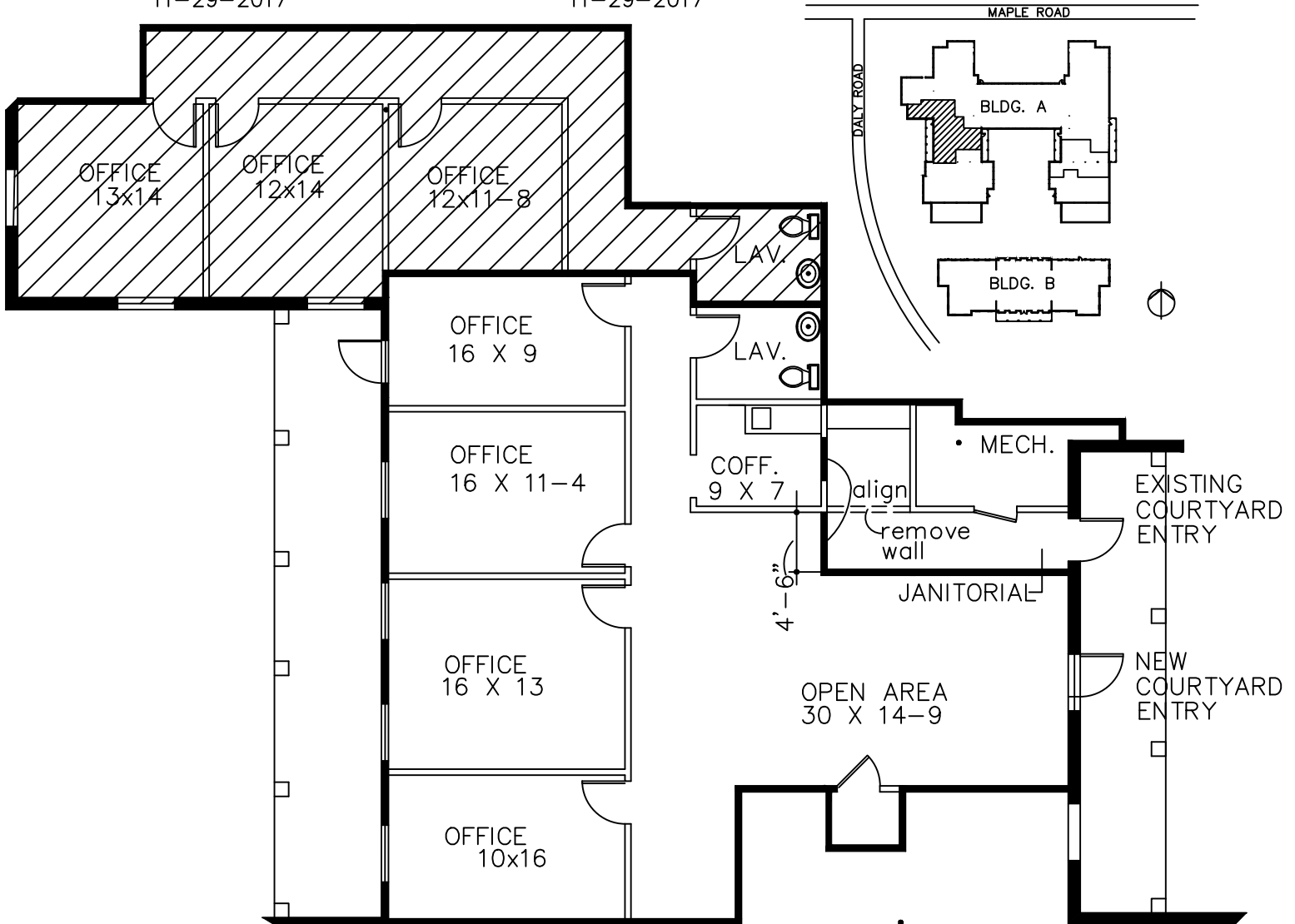
This suite features two entrances. They both enter into an open area that can be constructed into whatever your needs may be. There are also five (5) windowed offices; a coffee room with sink and counter and a private lavatory. Other features include windows that open and individual control over the HVAC.

# YORKTOWNE EXECUTIVE OFFICES

5777 MAPLE ROAD – WEST BLOOMFIELD  
AVAILABLE FOR LEASE  
APPROX. 1,775 SQ.FT.

SUITE #190-4  
APPROX. 840 U.S.F.  
11-29-2017

SUITE #190  
11-29-2017



*Beachum & Poeser*

DEVELOPMENT AND MANAGEMENT COMPANY

CONTACT:  
BILL BEACHUM  
1-248-647-7500

## CONSTRUCTION NOTES:

- 1) PROVIDE NEW WALLS TO GRID AS SHOWN, 3-1/2" METAL STUDS W/ 5/8" GYP BD. PRIMED WHITE.
- 2) REMOVE EXISTING WINDOW, FRAME FOR NEW 3'-0" X 6'-8" EXTERIOR GRADE FIBERGLASS AND GLASS DOOR.