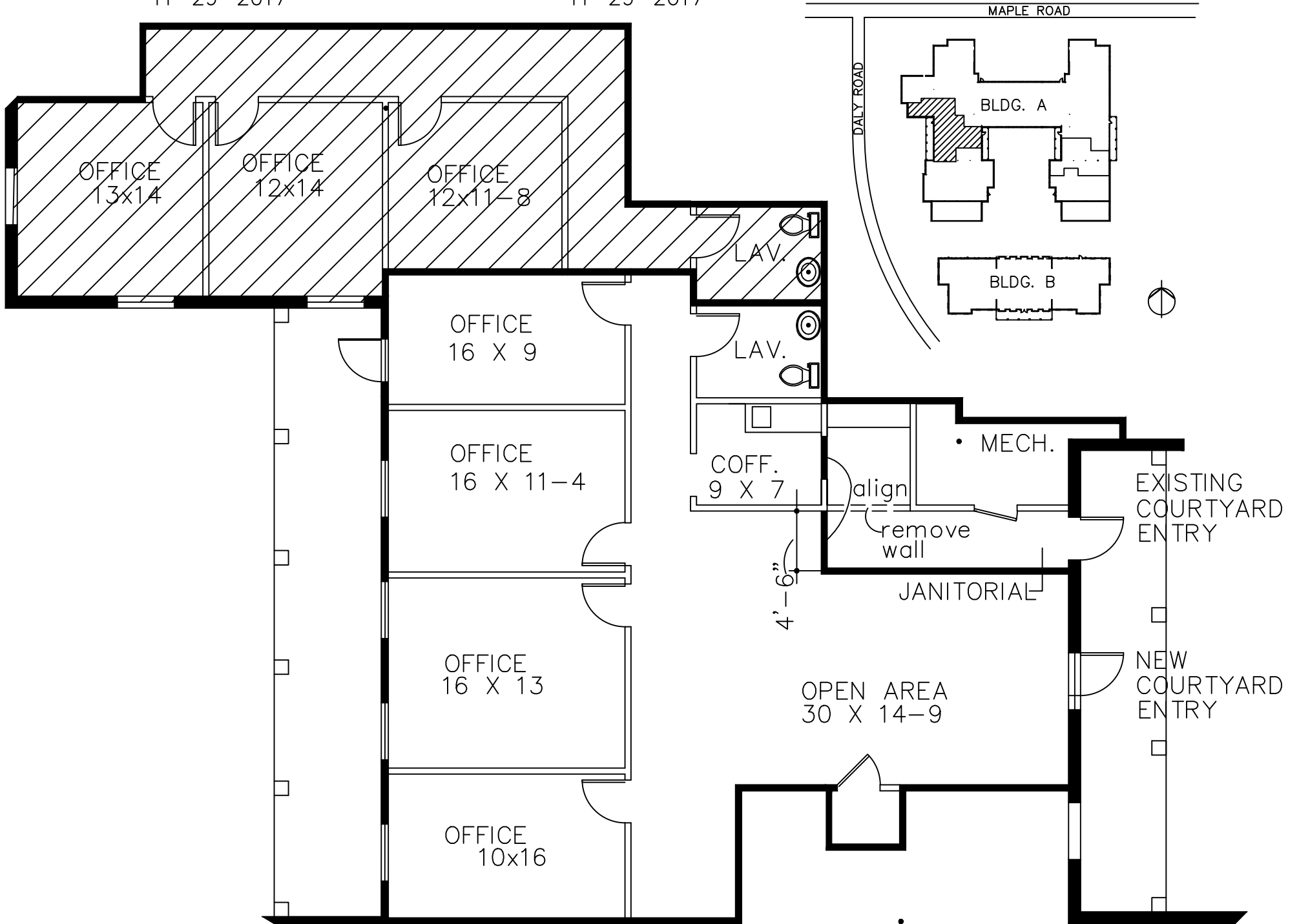


YORKTOWNE EXECUTIVE OFFICES

5777 MAPLE ROAD – WEST BLOOMFIELD  
AVAILABLE FOR LEASE

SUITE #190-4  
APPROX. 840 U.S.F.  
11-29-2017

APPROX. 1,775 SQ.FT.  
SUITE #190  
11-29-2017



*Beachum & Roeser*

DEVELOPMENT AND MANAGEMENT COMPANY

CONTACT:  
BILL BEACHUM  
1-248-647-7500

CONSTRUCTION NOTES:

- 1) PROVIDE NEW WALLS TO GRID AS SHOWN, 3-1/2" METAL STUDS W/ 5/8" GYP BD. PRIMED WHITE.
- 2) REMOVE EXISTING WINDOW, FRAME FOR NEW 3'-0" X 6'-8" EXTERIOR GRADE FIBERGLASS AND GLASS DOOR.