

## Bingham Farms - Georgetowne 31600 Building - 1,765 Sq. Ft



**PROPERTY ADDRESS:**

31600 Telegraph Road  
Suite 120  
Bingham Farms, MI 48025

**SUITE SIZE:** 1,765 Sq. Ft.

**AVAILABLE:** Immediately

**FLOORPLAN:** See page 2

**LEASE RATE:** Negotiable

**LEASE TERM:** 5 year term

**DEMOGRAPHICS:**

***Oakland County, MI:***

Population (2015): 1,243,970  
Median household income (2015): \$67,465  
Median house value (2015): \$178,900

***Bingham Farms, MI:***

Population (2015): 1,133  
Median household income (2015): \$102,083  
Median house value (2015): \$361,500



**SUITE DESCRIPTION:**

- Nicely sized waiting and reception area
- 2 non-windowed offices
- Large, windowed open area
- 1 windowed conference room
- Coffee area
- Private lavatory
- Large, windowed open area overlooking a beautiful, wooded area

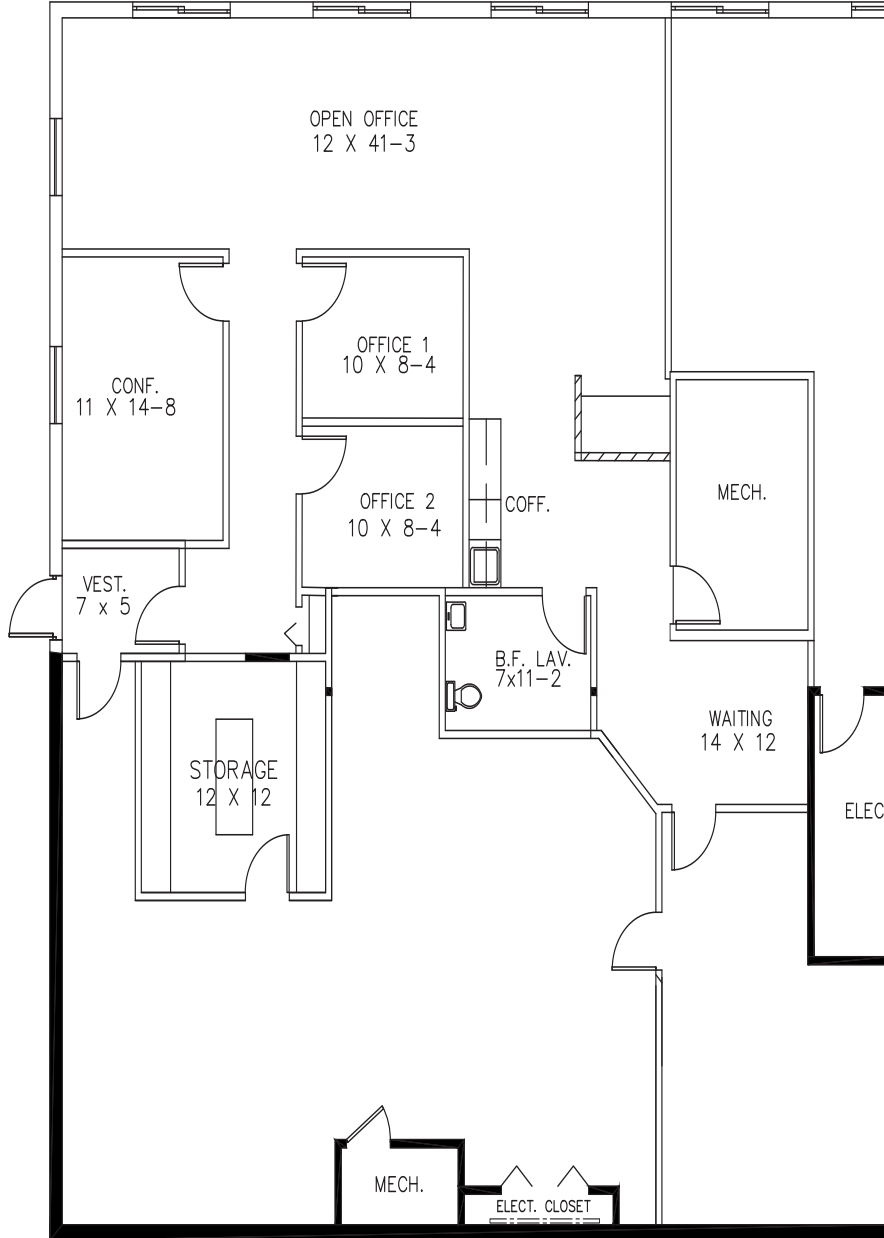
Other features include individual control over the HVAC; windows that open and plenty of convenient parking.

GEORGETOWNE EXECUTIVE OFFICES

31600 TELEGRAPH ROAD BINGHAM FARMS, MI

**SUITE #120**  
**APPROX. 1,765 R.S.F.**

**SUITE #130**  
**APPROX. 1,364 R.S.F.**



*Beachum & Poeser*

DEVELOPMENT & MANAGEMENT CORPORATION

CALL:  
BILL BEACHUM  
248-647-7500