

Bingham Farms - Georgetowne 31600 Building - 1,850 Sq. Ft



PROPERTY ADDRESS:
31600 Telegraph Road
Suite 120
Bingham Farms, MI 48025

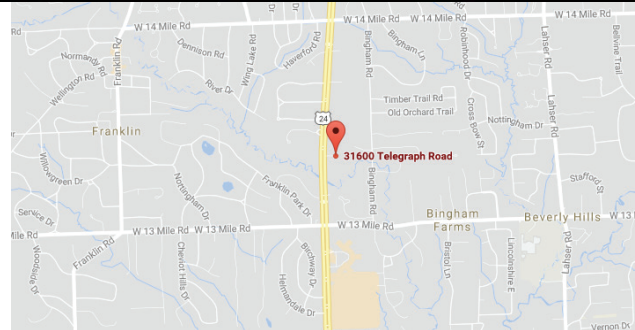
SUITE SIZE: 1,850 Sq. Ft.
AVAILABLE: Immediately
FLOORPLAN: See page 2
LEASE RATE: Negotiable
LEASE TERM: 5 year term
DEMOGRAPHICS:

Oakland County, MI:

Population (2015): 1,243,970
Median household income (2015): \$67,465
Median house value (2015): \$178,900

Bingham Farms, MI:

Population (2015): 1,133
Median household income (2015): \$102,083
Median house value (2015): \$361,500



SUITE DESCRIPTION:

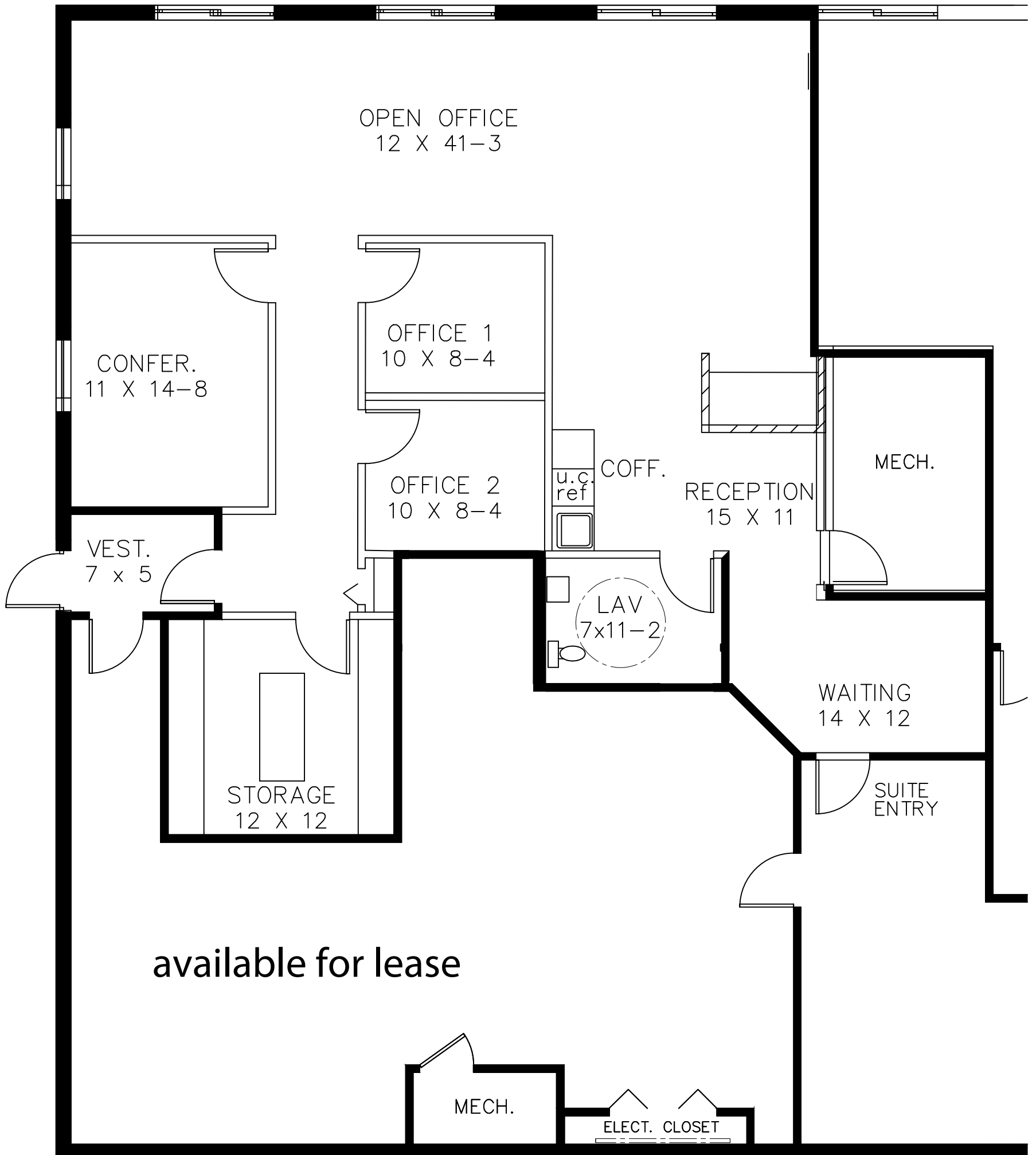
- Nicely sized waiting and reception area
- 2 non-windowed offices
- Large, windowed open area
- 1 windowed conference room
- Coffee area
- Private lavatory
- Large, windowed open area overlooking a beautiful, wooded area

Other features include individual control over the HVAC; windows that open and plenty of convenient parking.

GEORGETOWNE EXECUTIVE OFFICES

31600 TELEGRAPH ROAD BINGHAM FARMS, MI

suite #120 APPROX. 1,850 R.S.F.



Beachum & Poeser

DEVELOPMENT & MANAGEMENT CORPORATION