

## Bingham Farms - Georgetowne 31600 Building - 1,364 Sq. Ft



**PROPERTY ADDRESS:**

31600 Telegraph Road  
Suite 130  
Bingham Farms, MI 48025

**SUITE SIZE:** 1,364 Sq. Ft.  
**AVAILABLE:** Immediately  
**FLOORPLAN:** See page 2  
**LEASE RATE:** Negotiable  
**LEASE TERM:** Negotiable  
**DEMOGRAPHICS:**

***Oakland County, MI:***

Population (2015): 1,243,970  
Median household income (2015): \$67,465  
Median house value (2015): \$178,900

***Bingham Farms, MI:***

Population (2015): 1,133  
Median household income (2015): \$102,083  
Median house value (2015): \$361,500

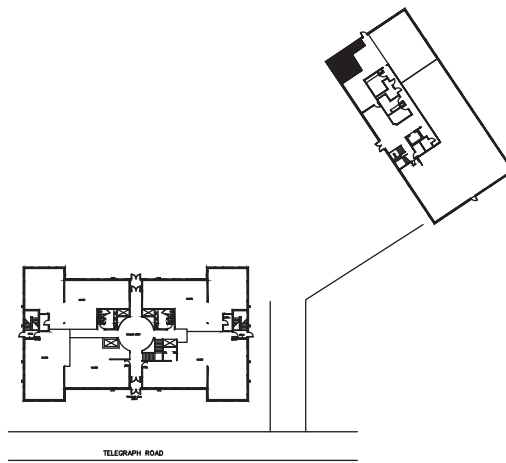


**SUITE DESCRIPTION:**

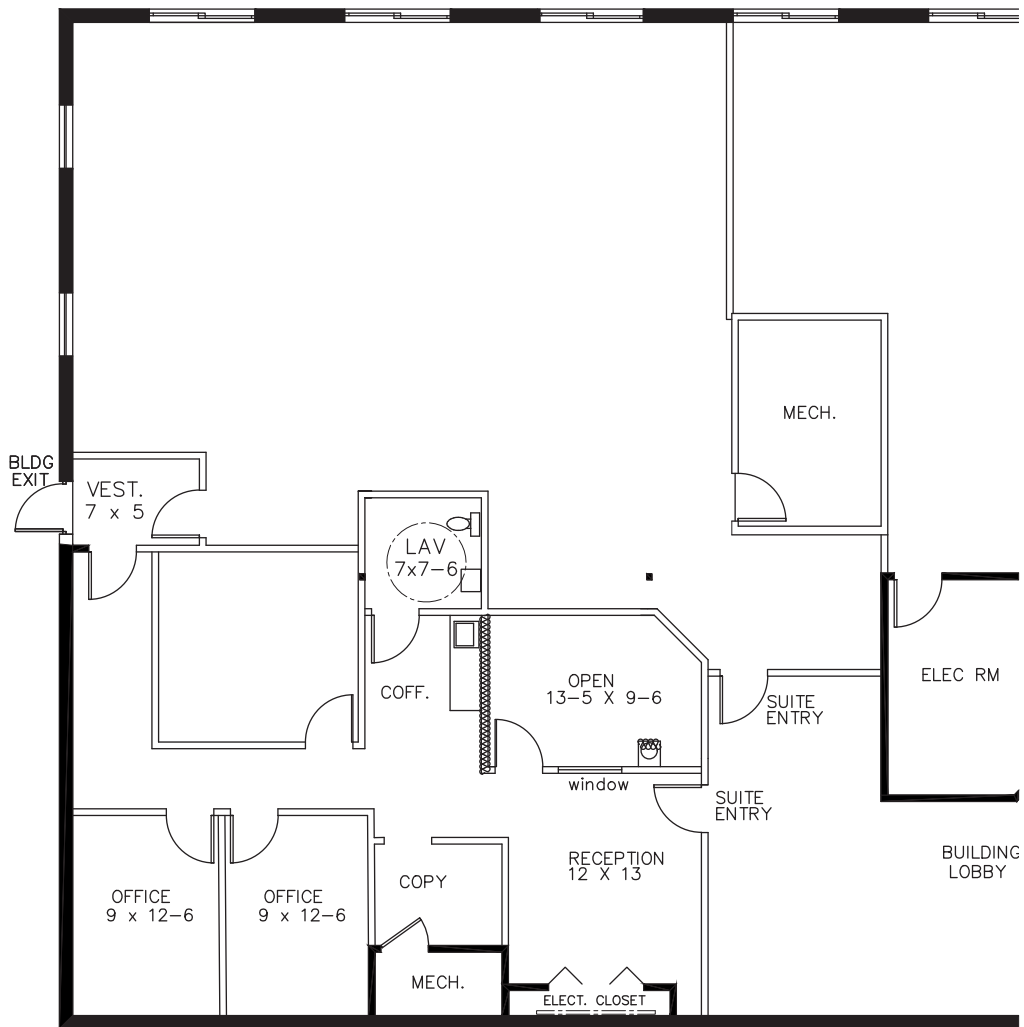
Nicely sized 1st floor suite.

- 3 offices
- Conference room
- Coffee room
- Copy room
- Restroom
- Reception area

Other features include: windows that open; individual control over HVAC; plenty of convenient parking just steps from the building entrance.



GEORGETOWNE EXECUTIVE OFFICES  
 31600 TELEGRAPH ROAD BINGHAM FARMS, MI  
 AVAILABLE FOR LEASE



**SUITE # 130**  
**1,364 U.S.F.**  
**(NON WINDOWED)**

*Beachum & Poeser*

DEVELOPMENT & MANAGEMENT CORPORATION

CALL:  
 BILL BEACHUM  
 248-647-7500