

Bingham Farms - Georgetowne 31600 Building - 2,049 Sq. Ft



PROPERTY ADDRESS:

31600 Telegraph Road
Suite 230
Bingham Farms, MI 48025

SUITE SIZE: 2,049 Sq. Ft.

AVAILABLE: Immediately

FLOORPLAN: See page 2

LEASE RATE: Negotiable

LEASE TERM: Negotiable

DEMOGRAPHICS:

Oakland County, MI:

Population (2015): 1,243,970

Median household income (2015): \$67,465

Median house value (2015): \$178,900

Bingham Farms, MI:

Population (2015): 1,133

Median household income (2015): \$102,083

Median house value (2015): \$361,500



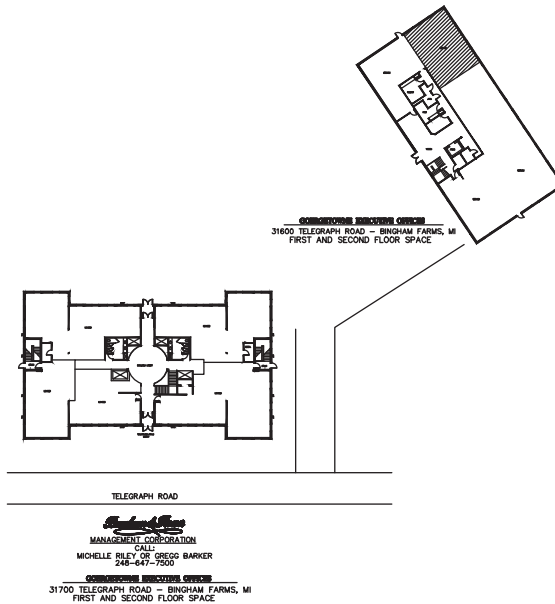
SUITE DESCRIPTION:

Nicely sized 2nd floor suite.

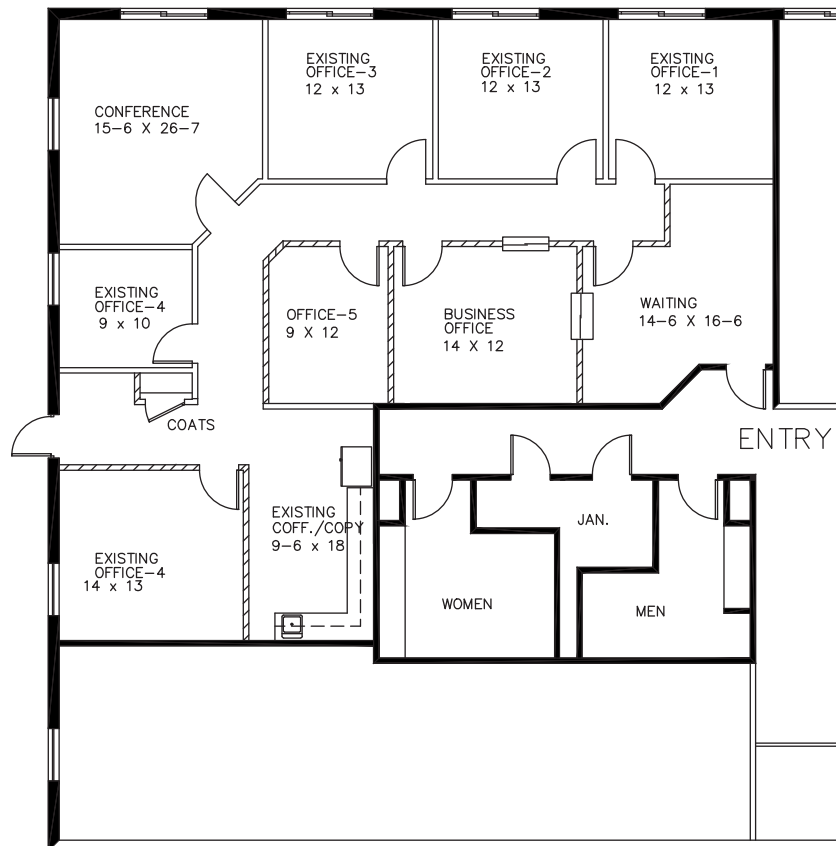
Suite features:

- 5 generous sized windowed offices
- 1 non-windowed office
- 1 windowed conference room
- 1 copy room
- A reception/waiting area
- Restrooms conveniently located right outside of suite

Other features include: windows that open; individual control over HVAC; plenty of convenient parking just steps from the building entrance.



GEORGETOWNE EXECUTIVE OFFICES
31600 TELEGRAPH ROAD BINGHAM FARMS, MI
JAY INWALD
EXISTING PLAN
APPROX. 2.049 U.S.F.
SUITE #230



Beachum & Roeser

DEVELOPMENT & MANAGEMENT CORPORATION

CALL:
BILL BEACHUM
248-647-7500