

Bingham Farms - Georgetowne 31600 Building - 1,824 Sq. Ft



PROPERTY ADDRESS:

31600 Telegraph Road
Suite 280
Bingham Farms, MI 48025

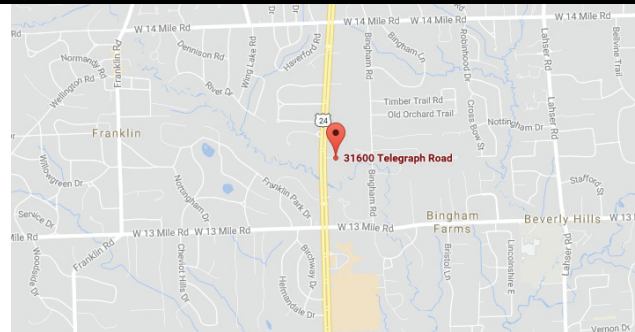
SUITE SIZE: 1,824 Sq. Ft.
AVAILABLE: Immediately
FLOORPLAN: See page 2
LEASE RATE: Negotiable
LEASE TERM: 5 year term
DEMOGRAPHICS:

Oakland County, MI:

Population (2015): 1,243,970
Median household income (2015): \$67,465
Median house value (2015): \$178,900

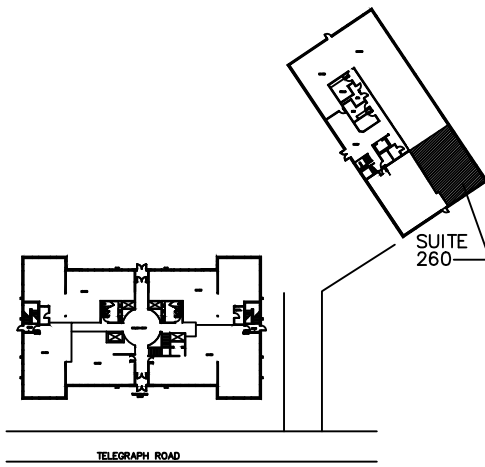
Bingham Farms, MI:

Population (2015): 1,133
Median household income (2015): \$102,083
Median house value (2015): \$361,500



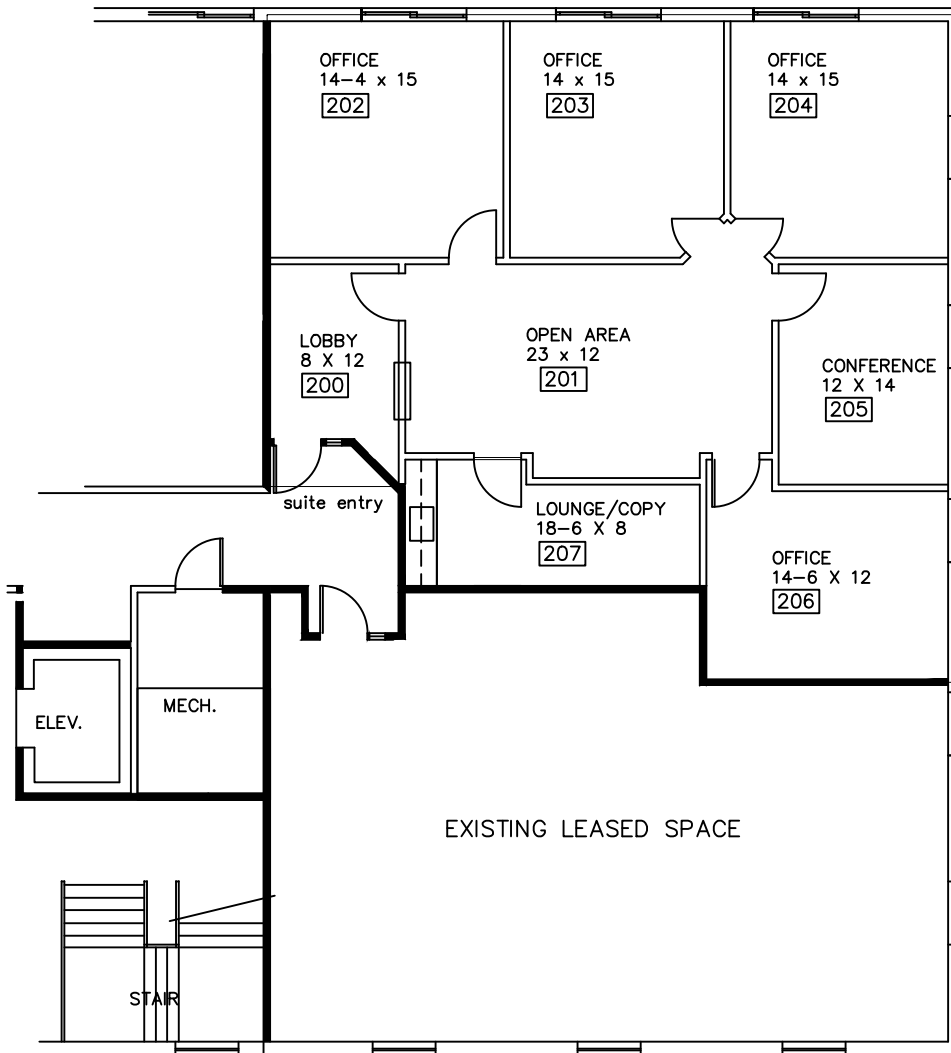
SUITE DESCRIPTION:

Nice corner suite available in the beautiful Georgetowne Office building. Suite features: a nice lobby upon entry; four (4) windowed offices; a windowed conference room; a large open area in center of suite; and an employee lounge/copy room with sink and countertop. Other features include: windows that open, individual control over HVAC and plenty of convenient parking, just steps from building entrance.



GEORGETOWNE EXECUTIVE OFFICES

31600 TELEGRAPH ROAD
 BINGHAM FARMS, MI. 48025
 SUITE 280
 APPROX. 1,824 R.S.F.
 LEASE EXHIBIT – TENANT
 6-29-2018



Beachum & Poeser

DEVELOPMENT & MANAGEMENT CORPORATION

CALL:
 BILL BEACHUM
 248-647-7500