

Bingham Farms - Georgetowne 31700 Building - 2,324 Sq. Ft



PROPERTY ADDRESS:

31700 Telegraph Road
Suite 120
Bingham Farms, MI 48025

SUITE SIZE: 2,324 Sq. Ft.
AVAILABLE: Immediately
FLOORPLAN: See page 2
LEASE RATE: Negotiable
LEASE TERM: Negotiable
DEMOGRAPHICS:

Oakland County, MI:

Population (2015): 1,243,970
Median household income (2015): \$67,465
Median house value (2015): \$178,900

Bingham Farms, MI:

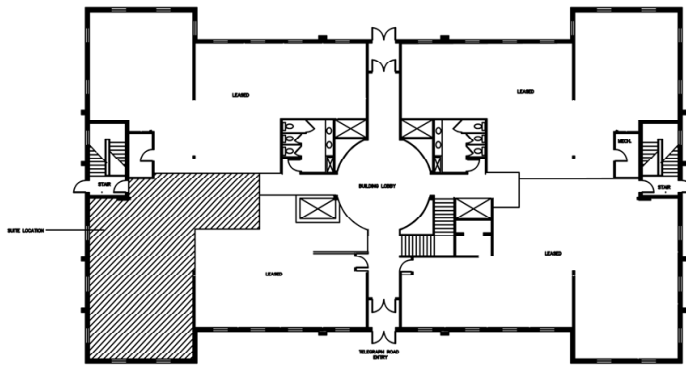
Population (2015): 1,133
Median household income (2015): \$102,083
Median house value (2015): \$361,500



SUITE DESCRIPTION:

Perfect office suite available at the beautiful Georgetowne Professional Office building.

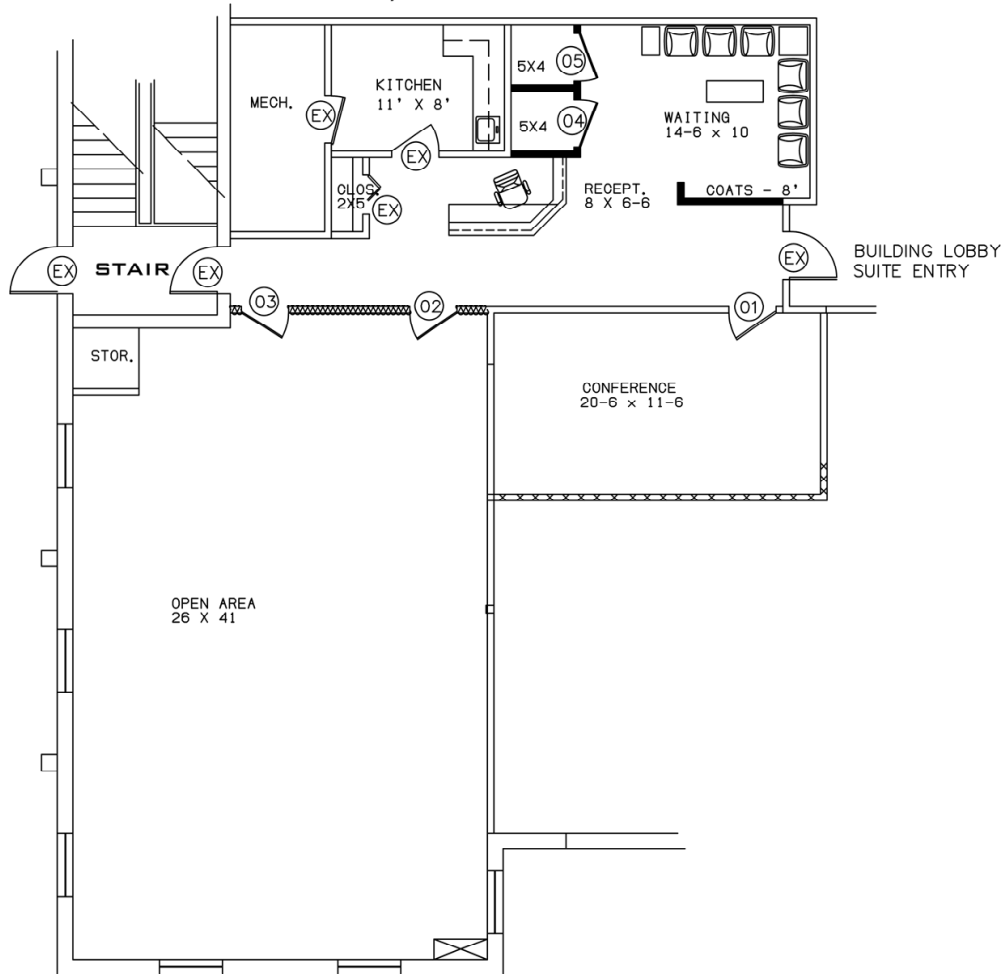
- Waiting area upon entry
- Large kitchen with sink and countertop
- Nicely sized conference room
- Wide open space with high modern ceilings and windows



TELEGRAPH ROAD

GEORGETOWNE PROFESSIONAL OFFICES

**31700 TELEGRAPH ROAD - BINGHAM FARMS, MI
 FIRST FLOOR SPACE
 AVAILABLE FOR LEASE
 SUITE #120
 2,324 R.S.F.**



PARTIAL FIRST FLOOR PLAN

Beachum & Poeser

DEVELOPMENT & MANAGEMENT CORPORATION

**CALL:
 BILL BEACHUM
 248-647-7500**