

Bingham Farms - Georgetowne 31700 Building - 807 Sq. Ft



PROPERTY ADDRESS:

31700 Telegraph Road
Suite 230
Bingham Farms, MI 48025

SUITE SIZE: 807 Sq. Ft.

AVAILABLE: Immediately

FLOORPLAN: See page 2

LEASE RATE: Negotiable

LEASE TERM: 5 year term

DEMOGRAPHICS:

Oakland County, MI:

Population (2015): 1,243,970
Median household income (2015): \$67,465
Median house value (2015): \$178,900

Bingham Farms, MI:

Population (2015): 1,133
Median household income (2015): \$102,083
Median house value (2015): \$361,500

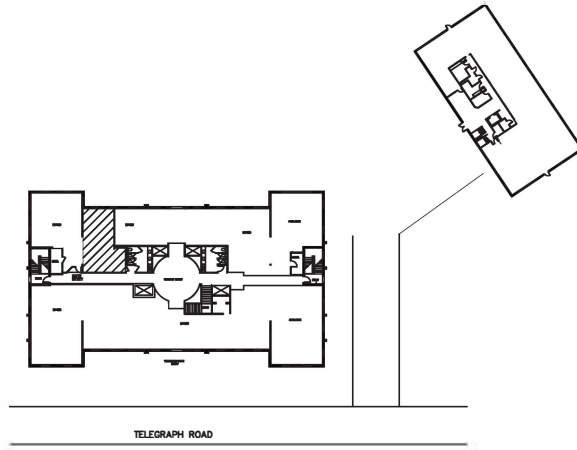


SUITE DESCRIPTION:

Perfect Suite for a one or two persons office.

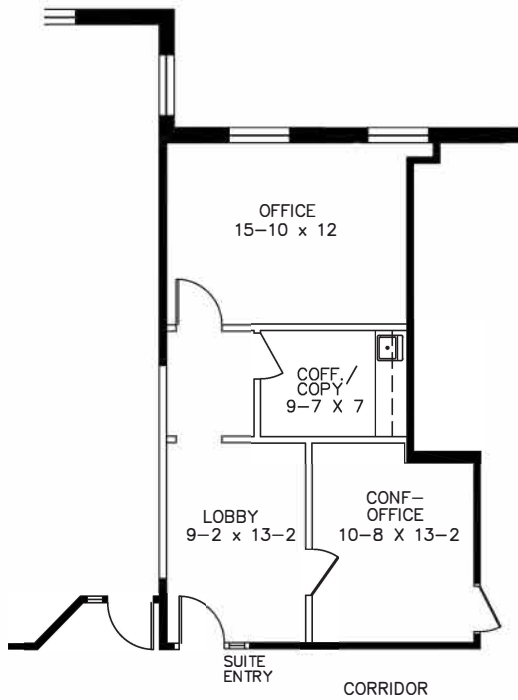
Suite features:

- One large, windowed office
- A nice sized lobby
- A conference room
- A coffee area with a sink and counter



GEORGETOWNE EXECUTIVE OFFICES
31700 TELEGRAPH ROAD—BINGHAM FARMS, MI

AVAILABLE FOR LEASE
SUITE #230 — SECOND FLOOR
APPROX. 807 R.S.F.



Beachum & Roeser

DEVELOPMENT & MANAGEMENT CORPORATION

CALL:
BILL BEACHUM
248-647-7500

01-16-03-104/586-05
6-30-15
LP-240