

## Bingham Farms - Georgetowne 31700 Building - 807 Sq. Ft



**PROPERTY ADDRESS:**

31700 Telegraph Road  
Suite 240  
Bingham Farms, MI 48025

**SUITE SIZE:** 807 Sq. Ft.

**AVAILABLE:** Immediately

**FLOORPLAN:** See page 2

**LEASE RATE:** Negotiable

**LEASE TERM:** 5 year term

**DEMOGRAPHICS:**

***Oakland County, MI:***

Population (2015): 1,243,970  
Median household income (2015): \$67,465  
Median house value (2015): \$178,900

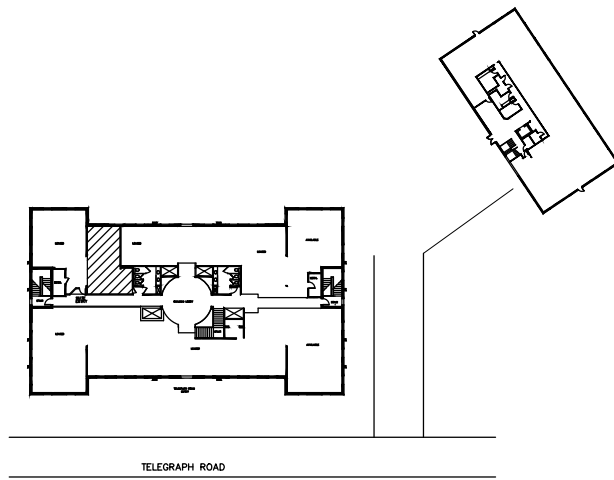
***Bingham Farms, MI:***

Population (2015): 1,133  
Median household income (2015): \$102,083  
Median house value (2015): \$361,500



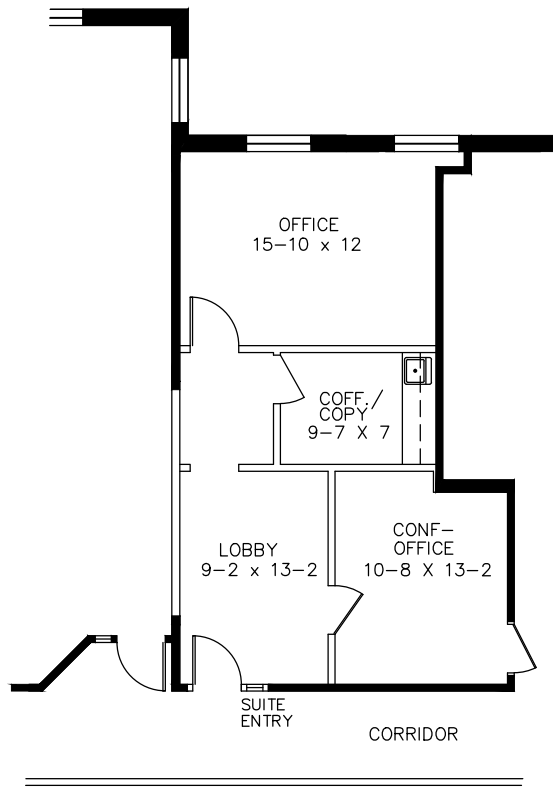
**SUITE DESCRIPTION:**

Perfect 1-3 person suite available on the 2nd floor of the beautiful Georgetowne Executive Office Building. Suite features: a nicely sized lobby upon entry; a large conference room; a large windowed office; a copy/coffee room with sink and countertop. Other features include: windows that open; individual control over the HVAC and plenty of convenient parking just steps from building entrance.



**GEORGETOWNE EXECUTIVE OFFICES**  
31700 TELEGRAPH ROAD—BINGHAM FARMS, MI

AVAILABLE FOR LEASE  
SUITE #240 — SECOND FLOOR  
APPROX. 807 R.S.F.



*Beachum & Roeser*

DEVELOPMENT & MANAGEMENT CORPORATION

CALL:  
BILL BEACHUM  
248-647-7500

01-16-03-104/586-05  
6-30-15

**LP-240**