

Bingham Farms - Georgetowne 31700 Building - 1,333 Sq. Ft



PROPERTY ADDRESS:

31700 Telegraph Road
Suite 265
Bingham Farms, MI 48025

SUITE SIZE: 1,333 Sq. Ft.

AVAILABLE: Immediately

FLOORPLAN: See page 2

LEASE RATE: Negotiable

LEASE TERM: 5 year term

DEMOGRAPHICS:

Oakland County, MI:

Population (2015): 1,243,970

Median household income (2015): \$67,465

Median house value (2015): \$178,900

Bingham Farms, MI:

Population (2015): 1,133

Median household income (2015): \$102,083

Median house value (2015): \$361,500



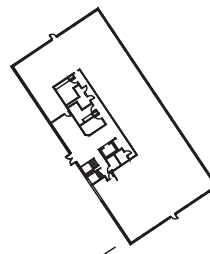
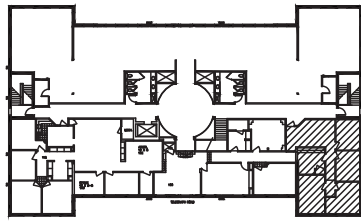
SUITE DESCRIPTION:

Second floor suite available at the beautiful Georgetowne Professional Building.

Suite features:

- Large windowed offices
- Windowed conference room
- A copy room
- Waiting room/reception entrance

Other features include: windows that open; individual control over HVAC and plenty of convenient parking just steps from building entrance. *Suite can be customized for your individual needs.*



TELEGRAPH ROAD

GEORGETOWNE EXECUTIVE OFFICES

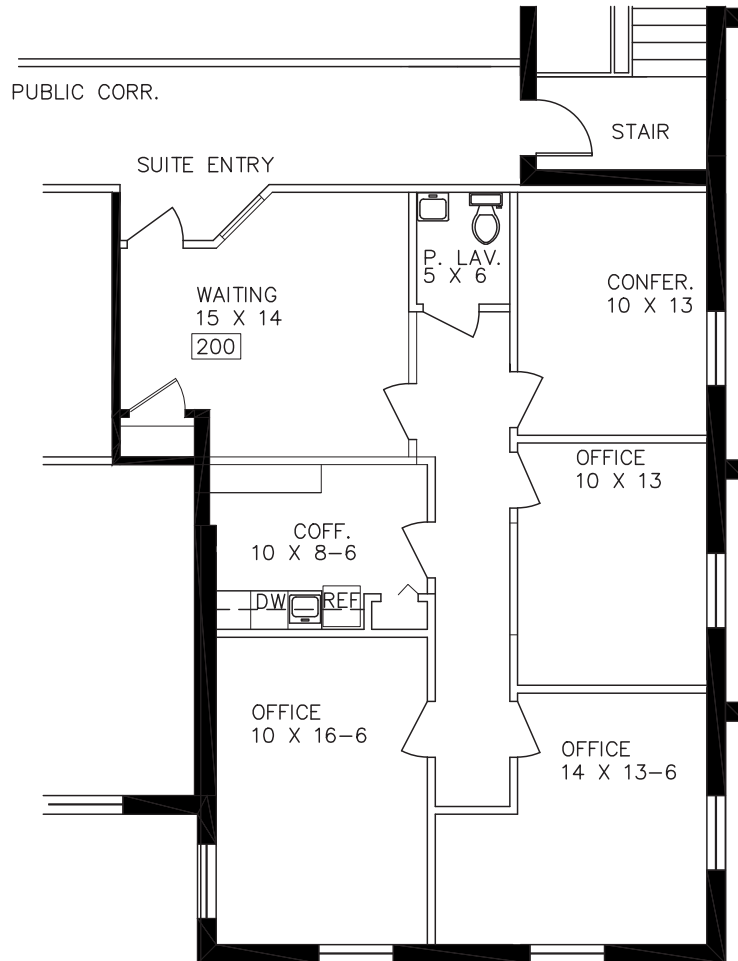
31700 TELEGRAPH ROAD — BINGHAM FARMS, MI

AVAILABLE FOR LEASE

SUITE # 265

AS-BUILT

APPROX. 1,333 RSF.



Beachum & Roeser

DEVELOPMENT & MANAGEMENT CORPORATION

CALL:

BILL BEACHUM

248-647-7500