

Bloomfield Hills - Governor's Place Building - 3,455 Sq. Ft



PROPERTY ADDRESS:

33 Bloomfield Hills Parkway
Suite 100
Bloomfield Hills, MI 48304

SUITE SIZE: 3,455 Sq. Ft.

AVAILABLE: Immediately

FLOORPLAN: See page 2

LEASE RATE: \$25.00 PSF - general office

LEASE TERM: Negotiable

DEMOGRAPHICS:

Oakland County, MI:

Population (2015): 1,243,970

Median household income (2015): \$67,465

Median house value (2015): \$178,900

Bloomfield Hills, MI:

Population (2015): 42,112

Median household income (2015): \$112,154

Median house value (2015): \$350,600



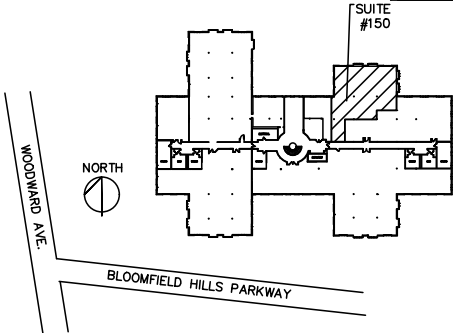
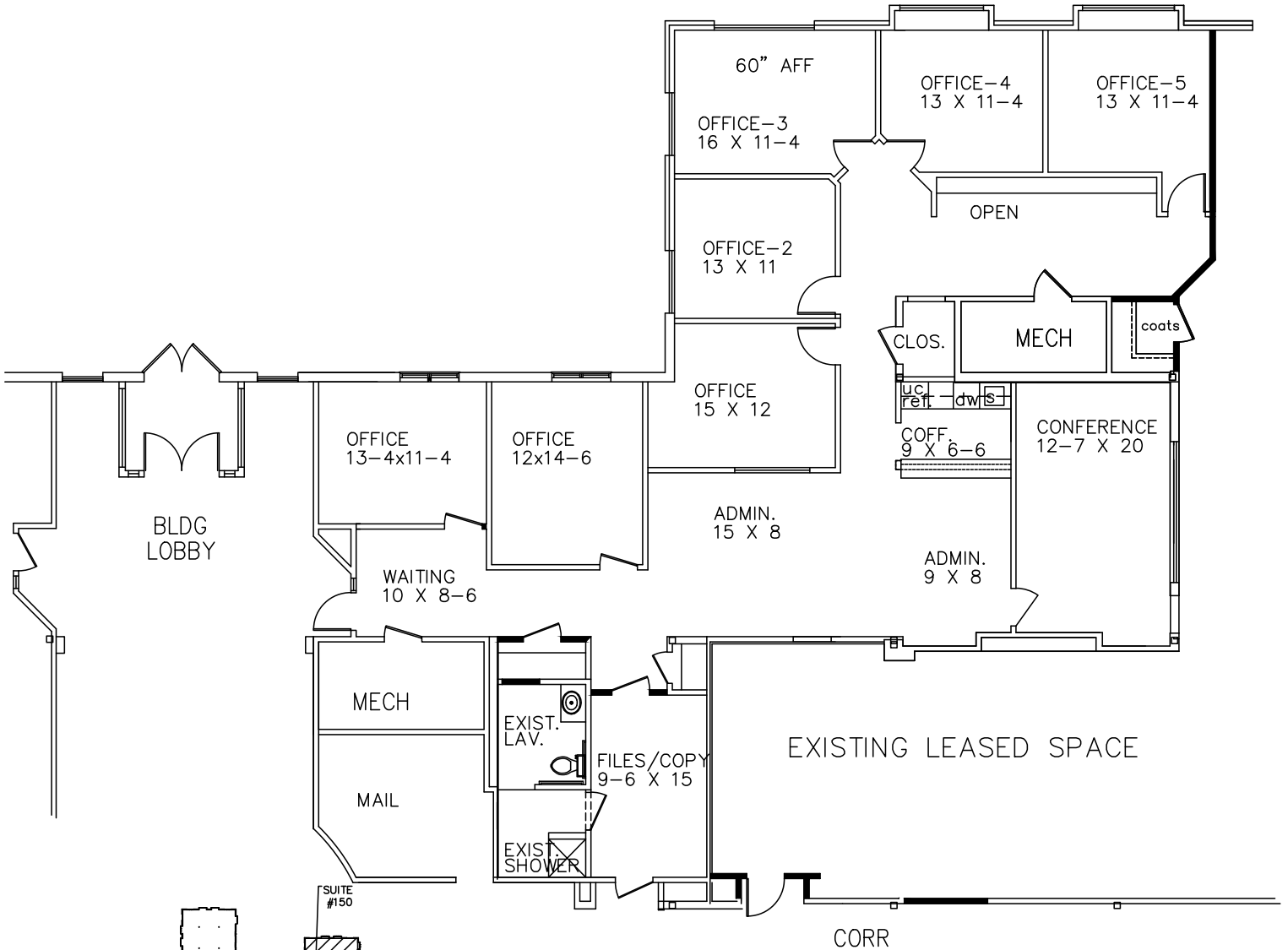
SUITE DESCRIPTION:

Large 1st floor suite

- 6 windowed offices
- 2 of which are corner offices
- 1 non-windowed office
- Waiting area upon entry
- Large administrative area
- Nice large, windowed conference room
- Coffee room
- File/copy room
- Private lavatory
- Windows that provide fresh air
- Convenient and ample parking

GOVERNORS PLACE

33 BLOOMFIELD HILLS PARKWAY
BLOOMFIELD HILLS, MI.
SUITE 100
APPROX. 3,455 R.S.F.



Beachum & Poeser

DEVELOPMENT & MANAGEMENT CORPORATION

CALL:
BILL BEACHUM
248-647-7500