

Bloomfield Hills - Governor's Place Building - 4,127 Sq. Ft



PROPERTY ADDRESS:

33 Bloomfield Hills Parkway
Suite 105
Bloomfield Hills, MI 48304

SUITE SIZE: 4,127 Sq. Ft.

AVAILABLE: Immediately

FLOORPLAN: See page 2

LEASE RATE: \$25.00 PSF - general office

LEASE TERM: Negotiable

DEMOGRAPHICS:

Oakland County, MI:

Population (2015): 1,243,970

Median household income (2015): \$67,465

Median house value (2015): \$178,900

Bloomfield Hills, MI:

Population (2015): 42,112

Median household income (2015): \$112,154

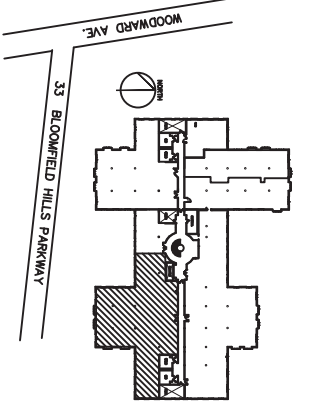
Median house value (2015): \$350,600



SUITE DESCRIPTION:

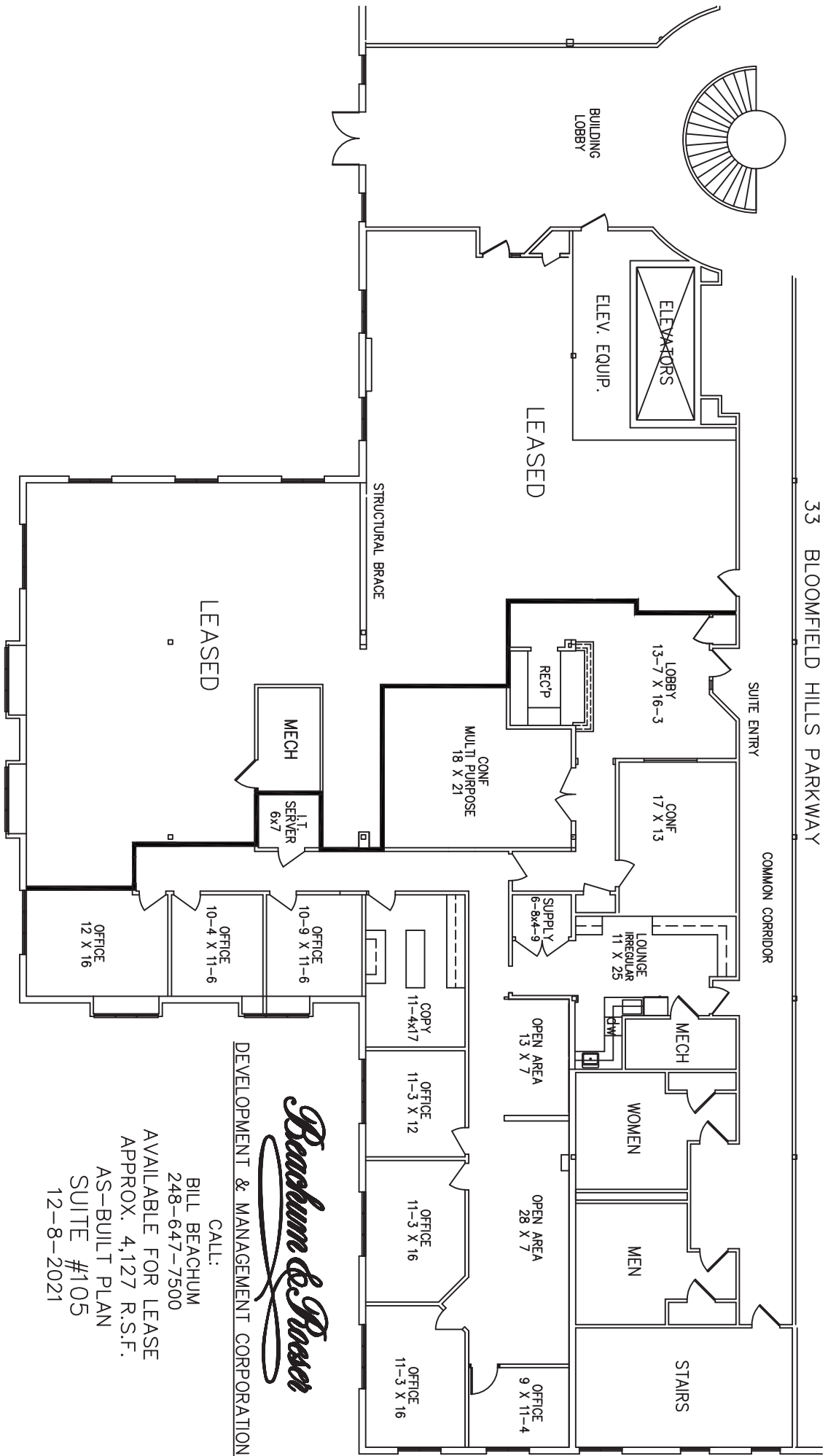
Large 1st floor suite

- A nicely sized lobby with reception area
- 7 windowed offices
- A copy room
- 1 large conference room
- 1 large multi-purpose room
- A supply room
- 2 centrally-located open areas
- An employee lounge
- Private ladies room
- Private mens room



GOVERNORS PLACE

33 BLOOMFIELD HILLS PARKWAY



Beachum & Prosser
 DEVELOPMENT & MANAGEMENT CORPORATION

CALL: BILL BEACHUM
 248-647-7500
 AVAILABLE FOR LEASE
 APPROX. 4,127 R.S.F.
 AS-BUILT PLAN
 SUITE #105
 12-8-2021