

Bloomfield Hills - Governor's Place Building - 3,060 Sq. Ft



PROPERTY ADDRESS:

33 Bloomfield Hills Parkway
Suite 110
Bloomfield Hills, MI 48304

SUITE SIZE: 3,060 Sq. Ft.

AVAILABLE: Immediately

FLOORPLAN: See page 2

LEASE RATE: \$25.00 PSF - general office

LEASE TERM: Negotiable

DEMOGRAPHICS:

Oakland County, MI:

Population (2015): 1,243,970

Median household income (2015): \$67,465

Median house value (2015): \$178,900

Bloomfield Hills, MI:

Population (2015): 42,112

Median household income (2015): \$112,154

Median house value (2015): \$350,600

Suite 110 can also be combined as follows:

Suite 110 - 3,060 sqft, Suite 125 - 2,746 sqft,

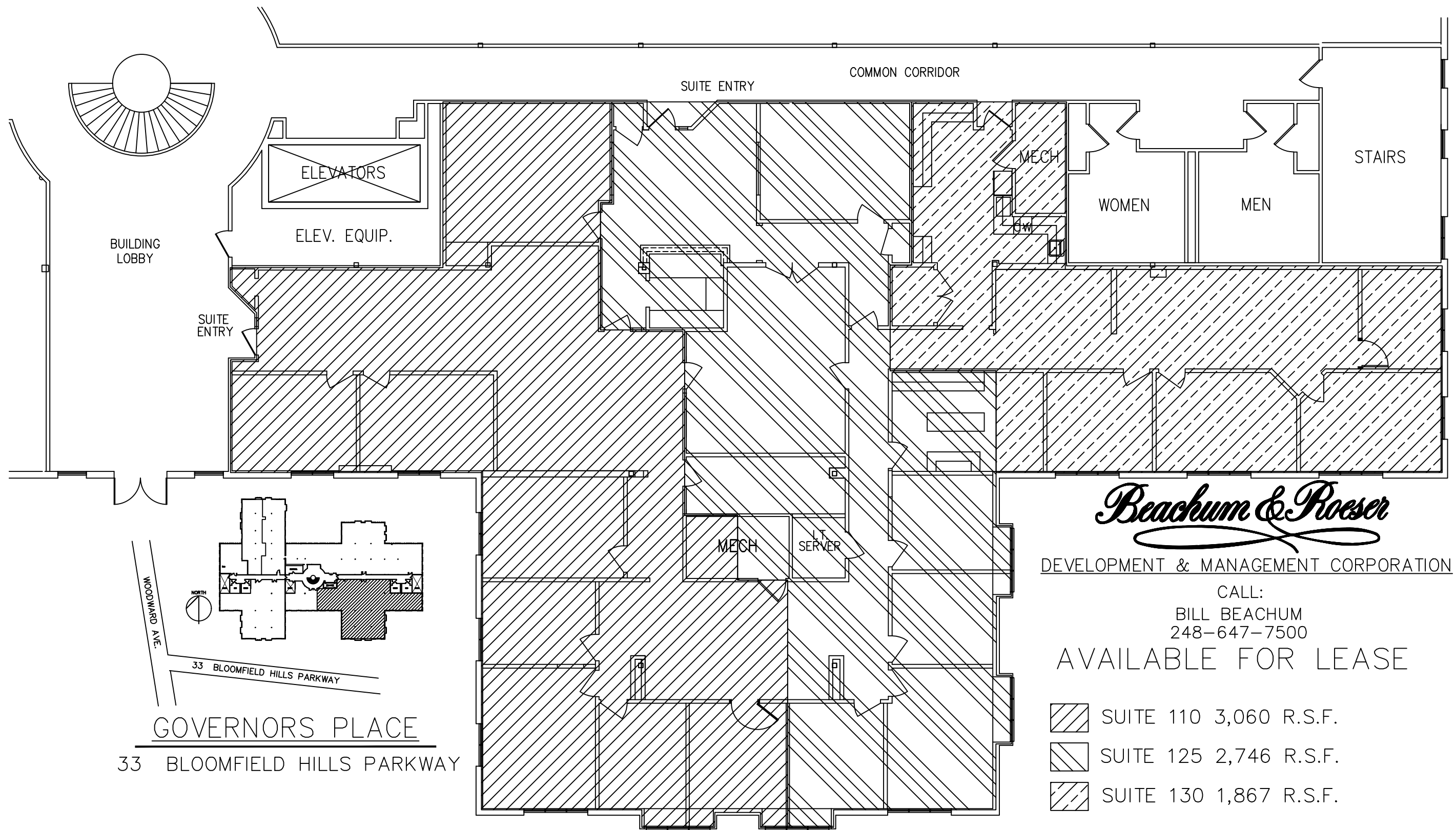
Suite 130 - 1,867 sqft for a total of 7,673 sqft



SUITE DESCRIPTION:

Large 1st floor suite

- Large reception area, upon entry
- 7 windowed offices
- Nicely sized conference room
- Admin area



BUILDING LOBBY

ELEVATORS

ELEV. EQUIP.

SUITE ENTRY

COMMON CORRIDOR

MECH

WOMEN

MEN

STAIRS

SUITE ENTRY

MECH

SERVER


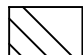
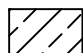
Beachum & Poeser

DEVELOPMENT & MANAGEMENT CORPORATION

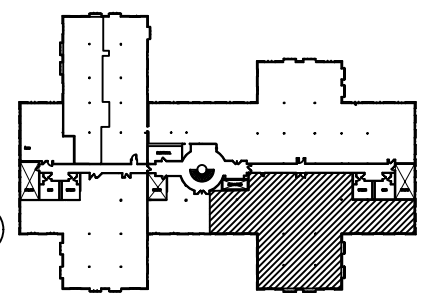
CALL:

BILL BEACHUM
248-647-7500

AVAILABLE FOR LEASE

-  SUITE 110 3,060 R.S.F.
-  SUITE 125 2,746 R.S.F.
-  SUITE 130 1,867 R.S.F.

WOODWARD AVE.



33 BLOOMFIELD HILLS PARKWAY

GOVERNORS PLACE

33 BLOOMFIELD HILLS PARKWAY