

## Bloomfield Hills - Governor's Place Building - 2,746 Sq. Ft



### PROPERTY ADDRESS:

33 Bloomfield Hills Parkway  
Suite 125  
Bloomfield Hills, MI 48304

**SUITE SIZE:** 2,746 Sq. Ft.

**AVAILABLE:** Immediately

**FLOORPLAN:** See page 2

**LEASE RATE:** \$25.00 PSF - general office

**LEASE TERM:** Negotiable

### DEMOGRAPHICS:

#### *Oakland County, MI:*

Population (2015): 1,243,970

Median household income (2015): \$67,465

Median house value (2015): \$178,900

#### *Bloomfield Hills, MI:*

Population (2015): 42,112

Median household income (2015): \$112,154

Median house value (2015): \$350,600

Suite 125 can also be combined as follows:

Suite 110 - 3,060 sqft, Suite 125 - 2,746 sqft,

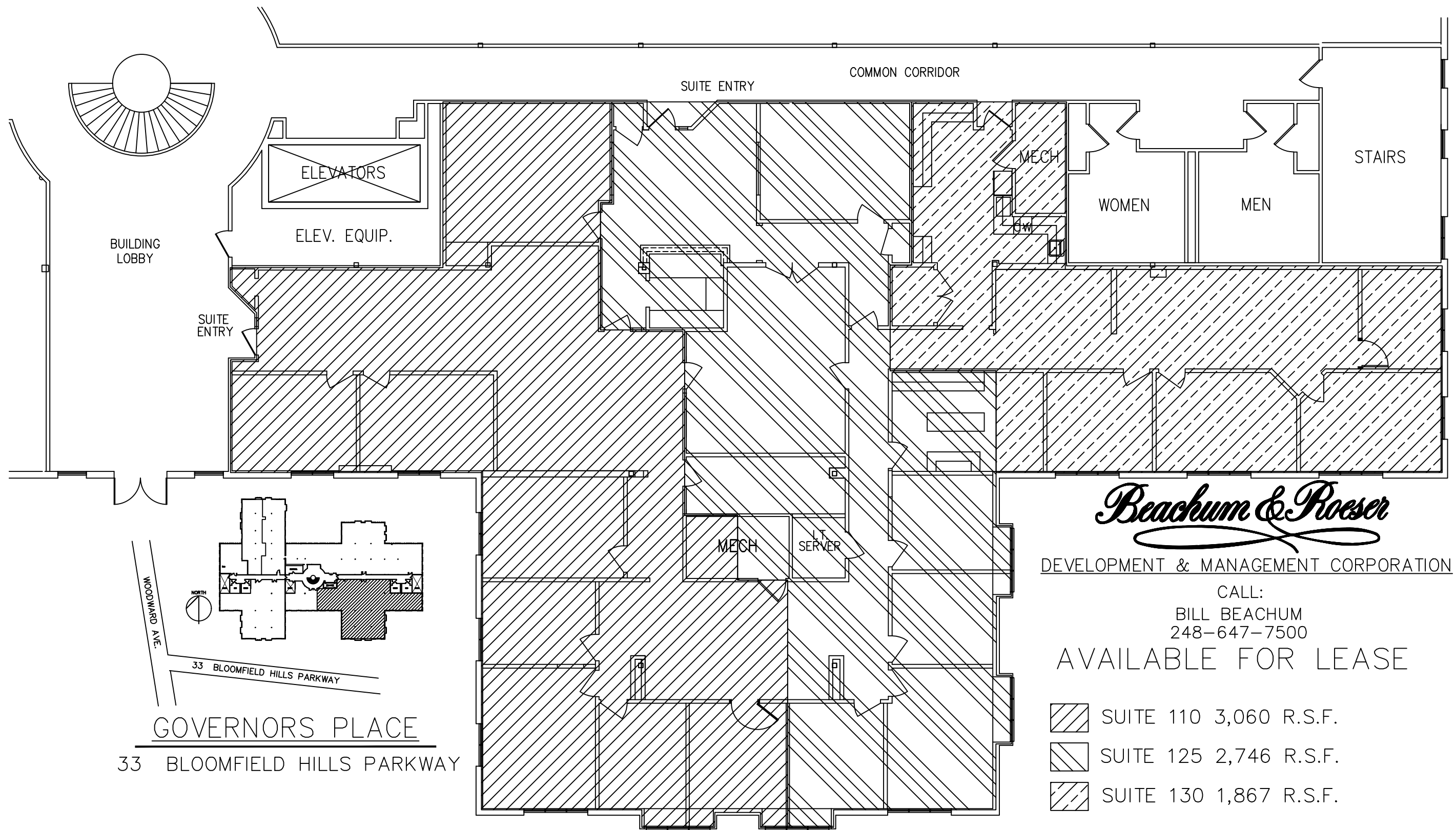
Suite 130 - 1,867 sqft for a total of 7,673 sqft



### SUITE DESCRIPTION:

Large 1st floor suite

- Nice reception area, upon entry
- Conference room
- 4 windowed offices
- 2 non-windowed offices
- Large group meeting area



*Beachum & Poeser*

DEVELOPMENT & MANAGEMENT CORPORATION

CALL:  
BILL BEACHUM  
248-647-7500

AVAILABLE FOR LEASE

**GOVERNORS PLACE**  
33 BLOOMFIELD HILLS PARKWAY

