

## Bloomfield Hills - Governor's Place Building - 7,568 Sq. Ft



### PROPERTY ADDRESS:

33 Bloomfield Hills Parkway  
Suite 125  
Bloomfield Hills, MI 48304

**SUITE SIZE:** 7,568 Sq. Ft.

**AVAILABLE:** Immediately

**FLOORPLAN:** See page 2

**LEASE RATE:** \$25.00 PSF - general office

**LEASE TERM:** Negotiable

### DEMOGRAPHICS:

#### *Oakland County, MI:*

Population (2015): 1,243,970

Median household income (2015): \$67,465

Median house value (2015): \$178,900

#### *Bloomfield Hills, MI:*

Population (2015): 42,112

Median household income (2015): \$112,154

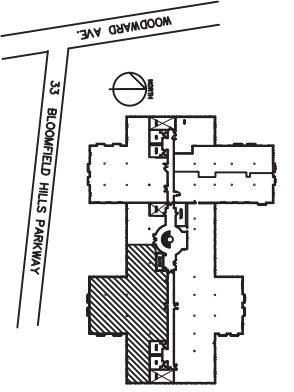
Median house value (2015): \$350,600



### SUITE DESCRIPTION:

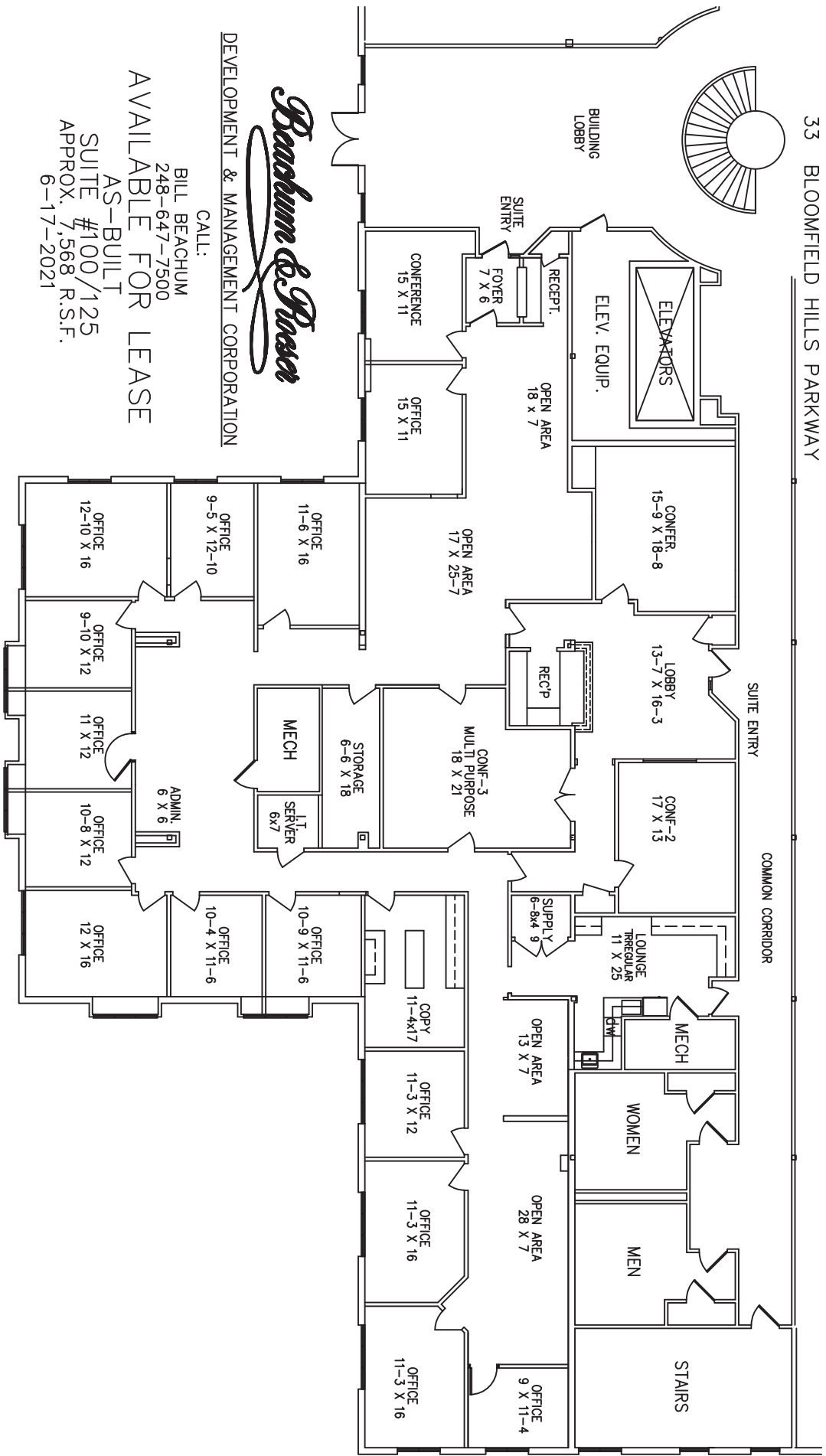
Large 1st floor suite

- Two entrances with separate reception areas
- Large lobby with reception area
- 15 windowed offices
- 2 administrative areas
- 3 large conference rooms
- 3 large open areas
- An I.T. server room
- Storage room
- Supply room
- An employee lounge
- Private ladies lavatory
- Private men's lavatory



# GOVERNORS PLACE

33 BLOOMFIELD HILLS PARKWAY



DEVELOPMENT & MANAGEMENT CORPORATION

CALL:

BILL BEACHUM  
248-647-7500

AVAILABLE FOR LEASE

AS-BUILT  
SUITE #100/125  
APPROX. 7,568 R.S.F.  
6-17-2021